



2025 Catalog

Pool & Spa Filtration Products





“Hello, I’m Jose Perez, President of OnCore Filtration™. Our vision is to be THE pool industry LEADER by offering an expanded product range with reliable, on-time performance. We build trust through exceptional value, strong support, and consistently exceeding expectations, driving sustainable growth and establishing ourselves as the #1 brand.”

OnCoreFiltration.com

Call: 843-620-6260

1665 Joe Rogers Jr Blvd Manning SC 29102



CONTENTS

ABOUT ONCORE	4
WHY ONCORE?	5
PRODUCT FEATURES	6
ONCORE MEDIA	7
Identify & Measure Your Filter Cartridge	8
ONCORE End Caps	9
USING THIS CATALOG	10
ONCORE POOL REPLACEMENT FILTERS	11-12
Find Your Pool Filter by Size	
4" POOL FILTERS	13
5" POOL FILTERS	13
7" POOL FILTERS	13-15
8" POOL FILTERS	16
9" POOL FILTERS	17
10" POOL FILTERS	17
ONCORE SPA REPLACEMENT FILTERS	18-19
Find Your Spa Filter by Size	
4" SPA FILTERS	20
5" SPA FILTERS	20-22
6" SPA FILTERS	23
7" SPA FILTERS	24
8" SPA FILTERS	24
POOL OEM/CROSS REFERENCE	25-31
CLEANING FILTERS	32
SPA OEM/CROSS REFERENCE	33-38
UPC POOL & SPA CODES	39-42
Terms and Conditions	43-46

“At OnCore Filtration, we deliver healthy, trusted solutions for clean, safe water. Our mission is to fuse innovation with dependability, enriching pool and spa experiences for healthier living, peace of mind, and the success of our partners.”





Building Business Success Together

At OnCore Filtration, we are dedicated to delivering FRESH, trusted solutions for clean, safe water. Our mission is to fuse innovation with dependability, enriching pool and spa experiences for healthier living, peace of mind, and the success of our partners.

ONCORE • ON POINT

Leading the industry with cutting-edge Point Bonded Media and innovative technology, we ensure every solution is precisely tailored to meet customer needs.

ONCORE • ON TIME

You can count on us to deliver the products you need, when you need them, backed by state-of-the-art equipment and best-in-class manufacturing.

ONCORE • ON DECK

We transform pools and spas into sanctuaries of health and happiness, guaranteeing satisfaction and peace of mind with every product.

ONCORE • ON SITE

Preferred by service technicians everywhere, our filtration products are reliable, high-quality, and help build lasting customer loyalty.

ONCORE • ON CALL

We exceed expectations through exceptional value, strong support, and unmatched customer service, building trust and reliability in every interaction.

ONCORE • ON TARGET

Our focus is to fuel sustainable growth for our company and partners, solidifying our position as the #1 brand in the industry.

Our passionate commitment to innovation and excellence is what drives us to lead and redefine the pool and spa filtration industry.

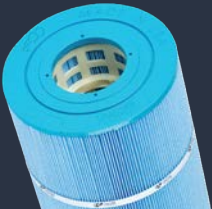
EVERCLEAR

Everclear is a point bond filter cartridge line for pools and spas. This line of filters use a time-tested injection-molded core and are wrapped with the finest high-filament count spunbond polyester



EVERFLOW+

Everflow+, an antimicrobial pool filter, prevents mildew and bacteria build-up plus are resistant to cracking and chemical deterioration. Everflow+ filters are available in a variety of sizes for both pools and spas.



WHY ONCORE?



OnCore Filtration™ products are proudly manufactured and assembled in Manning, South Carolina. With a 72,000 square foot manufacturing facility, OnCore Filtration™ offers the latest tech and vertical integrations. The OnCore team has over 60 years of filtration experience and over 30 years in the Pool and Spa market to help meet our customers' individualized needs. All of our items are proudly assembled in the USA.



State-of-the-art equipment and best manufacturing practices makes OnCore Filtration™ always FAST



Incorporating the finest polyester material and molded cores makes OnCore Filtration™ always PURE



Dedication to a quality, value and exceptional customer service makes OnCore Filtration™ always TRUE



PRODUCT FEATURES

QUICK CHECK
UNIQUE ONCORE PART NUMBER

ROBUST END CAPS
MADE FROM TIME-TESTED CHLORINE & MILDEW RESISTANT URETHANE SYSTEM

FINEST PORES
FINE DENIER, HIGH-FILAMENT COUNT SPUNBOND POLYESTER FOR THE BEST FILTRATION

BREAK RESISTANT BANDS
STRATEGICALLY PLACED TO SUPPORT THE MEDIA PLUS MAINTAIN PLEAT SPACING

STRONG CORES
INJECTION-MOLDED CORES MADE FROM 100% VIRGIN ABS OR PP

SYMMETRIC OPENINGS
OF CORES PROVIDES AN EVEN FILTER LOADING DURING USE

RUGGED POINT-BONDED
PATTERNED CONSTRUCTION ALLOWS FOR EVEN LOADING

FLAWLESS FIT
PRECISELY ENGINEERED TO MEET POOL AND SPA SPECIFICATIONS





ONCORE MEDIA

POINT BONDING

In modern polyester spun-bonded processes, continuous fibers are spun at high speeds and interlock to form a web, becoming the filtration media. To ensure stability, the fibers within this web must be securely locked.

Point bonding achieves this by running the web over a calendar roller with a patterned surface. The raised areas create dimples in the media, forming a strong weld pattern that locks the fibers in place while allowing movement between them, enabling the media to adapt to flow conditions and capture particles of different sizes.

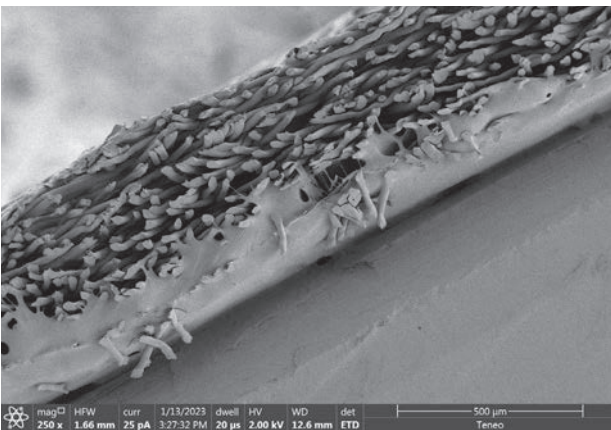
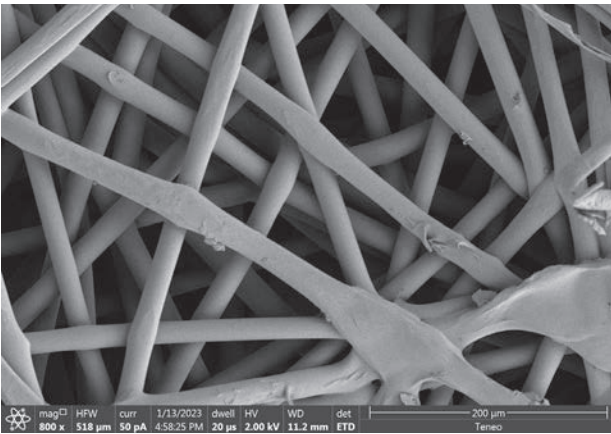
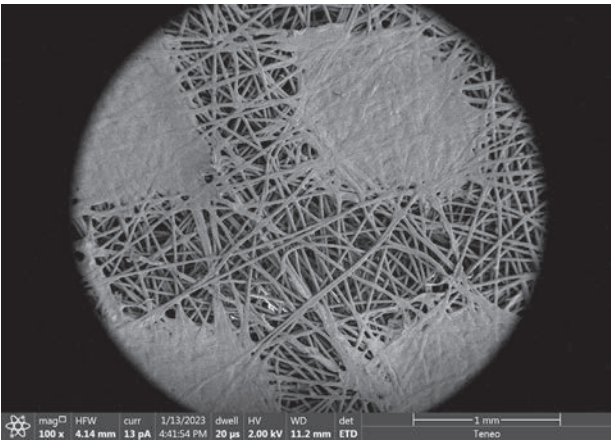
In pool and spa applications, these welds promote filter cake formation, enhancing filtration efficiency over time. As water passes over the surface, it channels around the welds, improving the process.

When the filter becomes loaded (seen as decreased flow in spas or increased tank pressure), it can be removed and cleaned. The consistent weld pattern facilitates debris release, preventing full clogging of the media and simplifying cleaning.

WEB LOFT

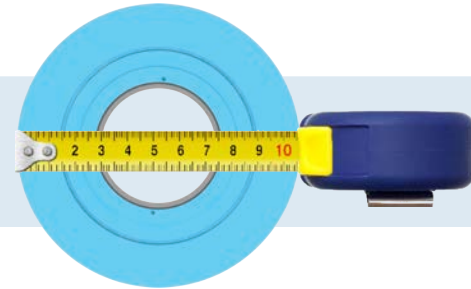
Oncore uses low denier, high fiber count polyester media to achieve many crossover points inside the web. This creates more pores of finer consistency allowing the media to be very efficient at removing debris. Smaller and more abundant pores achieve cleaner water sooner. Studies have shown a faster drop in turbidity (water cloudiness) when using a low denier Point Bonded media. As seen on the cross section of the web, welds on the surface of the media do not penetrate all the way through. This allows the water to travel throughout the loft of the web working its way out the other side.

The approach of Point Bonded, low denier, high fiber count, high crossover-point media delivers more fiber surface area than our competitors allowing us to provide the best filtration in the market.

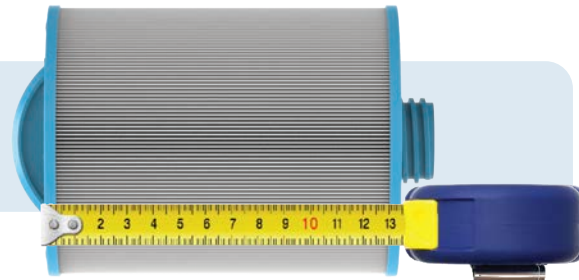


IDENTIFY & MEASURE

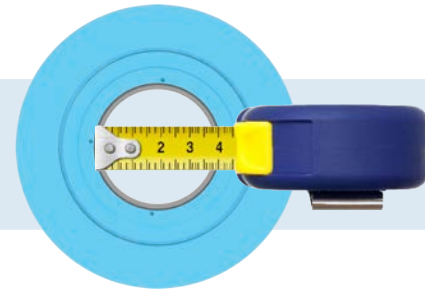
1 MEASURE THE OUTER DIAMETER (+/- 1/16)



2 MEASURE THE LENGTH Measure the the edge of the top end cap to the edge of the bottom end cap in inches (+/- 1/16). Do not include any handles or any extensions.



3 MEASURE THE INSIDE DIAMETER Top & Bottom. (+/- 1/16)



4 OEM NAME / MODEL NUMBER If possible note the original equipment manufacturer

5 COUNT THE PLEATS Take note if there is a center core.

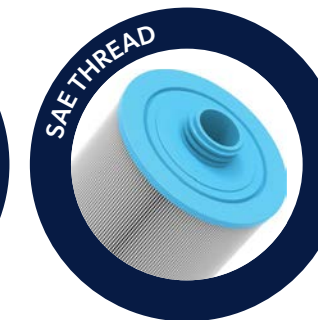
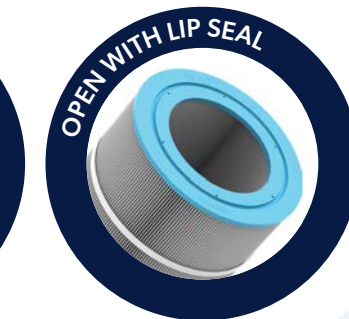
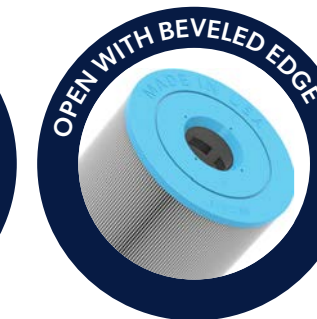
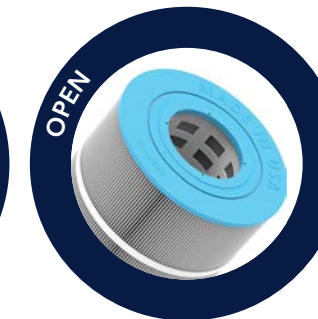
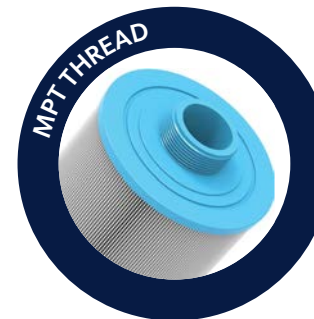
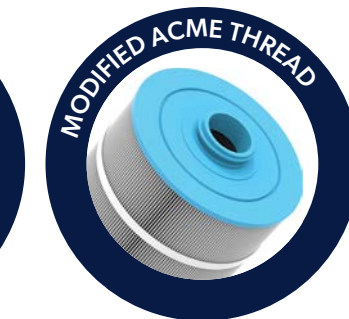
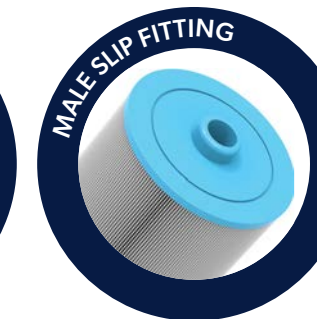
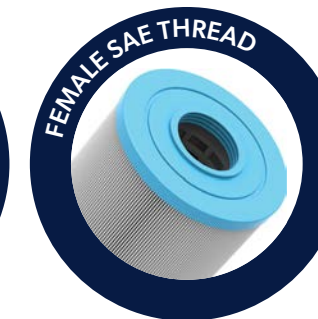
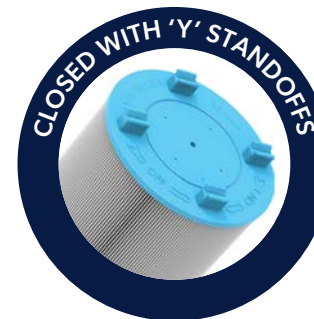
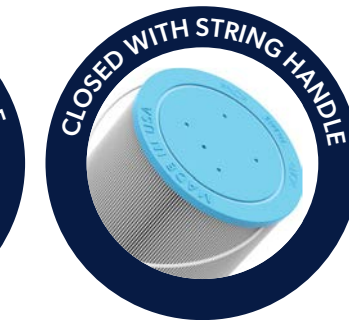
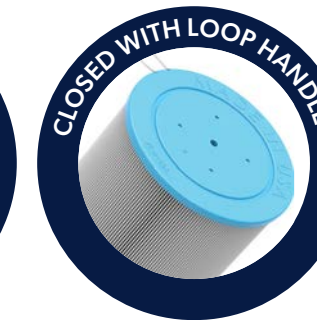
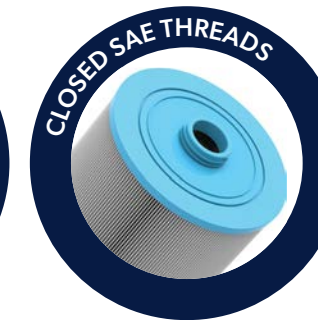
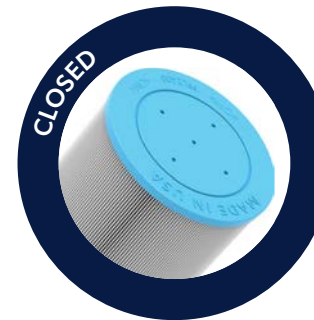
FIND YOUR FILTER

IN THIS CATALOG
 OUTER DIAMETER - PAGE 12
 OEM CROSS REFERENCE - PAGE 22

ONLINE
 CHECK OUT OUR NEW ONLINE
 PRODUCT FINDER ON OUR WEBSITE
 SCAN HERE



END CAPS





PART NUMBER LEGEND

HOW TO READ AN ONCORE PART NUMBER

WPOC	MAS	8	06	A	M	4P
PREFIX	OEM	OUTER DIAMETER	LENGTH	SERIES DIGIT	MEDIA TYPE	PACK QTY
Indicates OnCore filter type WPOC for Pool WSOC for Spa	First three characters of manufacturer - See below	Single digit rounded down to the closest integer. When diameter is 10, the letter J is used	Two digit end cap to end cap length rounded down to the closest integer	Indicating the sequence of diameter / length. Example: A = 1st in SERIES, B = 2nd...	ANTIMICROBIAL MEDIA An 'M' is added at the end of the part number	Represents the number of cartridges sold in the case 4P= 4 pack

OEM NAMES & CODES
(Original Equipment Manufacturer)

OEM CODE	OEM
ADE	ADVANTAGE ELECTRIC
ALC	ALCOVE
AQS	AQUASTAR
ARS	ARTESIAN SPAS
AST	ASTRAL
BEW	BEST WAY
BHU	BAKER HYDRO ULTRA
BHY	BAKER HYDRO
BUF	BULFROG SPAS
CAL	CAL SPAS
CLD	CALDERA SPAS
CLS	COLEMAN SPAS
COL	COLECO
CST	COAST SPAS
DAK	DAKOTA SPAS
DIV	DISCOVERY SPAS
DON	DIMENSION ONE
DOU	DOUGHBOY
DRM	DREAM MAKER SPAS
FFL	FREEFLOW SPAS
FWP	FOX WAL-PAK
GRF	GENERAL FOAM
GTS	GATSBY SPAS

OEM CODE	OEM
HAR	HARMSCO
HAU	HAUGHS
HAY	HAYWARD INDUSTRIES
HRC	HERCULES
ICN	ICON SPAS
INF	INFINITY SPAS
INX	INTEX
JAN	JANDY (FLUIDRA)
JCC	JACUZZI COMPETITION
JCP	JACUZZI PREMIUM
JCW	JACUZZI WHIRLPOOL
JCZ	JACUZZI POOL
LAS	LA SPAS
LBS	LEISURE BAY SPAS
LBY	LEISURE BAY MANUFACTURING
MAS	MASTER SPAS
MAX	MAAX SPAS
MTC	MARTEC
MUS	MUSKIN
NEM	NEMCO
OXY	ONYX SPAS
PLC	POOLCO
PLT	PENTAIR (PLEATCO)
PMQ	MARQUIS SPAS

OEM CODE	OEM
PNA	PENTAIR (AMERICAN PRODUCTS)
PNC	PENTAIR (CLEAN AND CLEAR)
PND	PENTAIR (COMMANDER)
PNF	PENTAIR (PAC FAB)
PNX	PENTAIR (PUREX)
PRM	PREMIER
SUN	SUNRISE
RBW	PENTAIR (RAINBOW)
RWS	REC WAREHOUSE
SAN	SANTANA
SIB	SPA IN BOX
SRG	SARATOGA SPAS
STG	STRONG INDUSTRIES
STR	PENTAIR (STA-RITE)
SUD	SUNDANCE SPAS
SUN	SUNRISE SPAS
SYL	SYLVIAN
UST	US TOOLING
VAK	VAK PAK
VTA	VITA SPAS
WAC	WATERCO
WET	WET INSTITUTE
WTK	WATKINS HOT SPRINGS
WVY	WATERWAY PLASTICS

POOL REPLACEMENT FILTERS

BY MEASUREMENT



ONCORE
EVERCLEAR™
POINT BOND
POOL REPLACEMENT FILTERS

OUR RUGGED & FINEST
POOL CARTRIDGE LINE

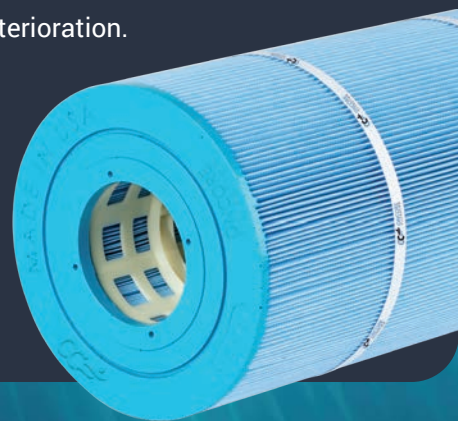
These replacement filters have an injection-molded core made from 100% virgin ABS or PP. The cores are wrapped with our finest high-filament count spun-bond polyester. Then capped with robust end caps made from a chlorine and mildew resistant urethane. This time-tested process creates a filter that is easy to use and resistant to cracking and chemical deterioration.



ONCORE
EVERFLOW+™
ANTIMICROBIAL
POOL REPLACEMENT FILTERS

MILDEW AND BACTERIA
RESISTANT LINE

These pool replacement filters are made to prevent mildew and bacteria build up on the cartridge. Each filter has an injection-molded core made from 100% virgin ABS or PP. Our EverFlow+ antimicrobial high-filament count spun-bond polyester is wrapped around the cores. Then capped with robust end caps made from a chlorine and mildew resistant urethane system. This time-tested process creates a filter that is easy to use and resistant to cracking and chemical deterioration.



POOL | 4"

BY MEASUREMENT

ONCORE PART #	DESCRIPTION	OD INCHES	LENGTH INCHES	TOP HOLE INCHES	BOTTOM HOLE INCHES	MEDIA WEIGHT OZ / YD2	MEDIA SQ. FT	CASE QTY
WPOC.HAY411D-6P	Hayward C-120, MicroStar-Clear (in-line)	4 5/8	11 7/8	2 1/16	2 1/16	4	12	6
WPOC.HAY411E-6P	Hayward C-200, MicroStar-Clear, American Commander II	4 5/8	11 7/8	2 1/16	2 1/16	4	20	6
WPOC.HAY411F-6P	Hayward MicroStar-Clear C225, American Commander II	4 5/8	11 7/8	2 1/16	2 1/16	4	25	6

POOL | 5"

ONCORE PART #	DESCRIPTION	OD INCHES	LENGTH INCHES	TOP HOLE INCHES	BOTTOM HOLE INCHES	MEDIA WEIGHT OZ / YD2	MEDIA SQ. FT	CASE QTY
WSOC.OXY517A-5P	Advantage Electric 50	5	17 3/8	2 1/8	2 1/8	3	50	5

POOL | 7"

ONCORE PART #	DESCRIPTION	OD INCHES	LENGTH INCHES	TOP HOLE INCHES	BOTTOM HOLE INCHES	MEDIA WEIGHT OZ / YD2	MEDIA SQ. FT	CASE QTY
WPOC.HAY719U-4P	Hayward C7030, HCF7030, HCF7030C	7	19 1/8	3	3	4	200	4
WPOC.HAY714G-4P	Hayward SwimClear C2025	7	14 3/16	3	3	4	56	4
WPOC.HAY719D-4P	Hayward SwimClear C3025, C3030, open w/ molded gasket	7	19 5/8	3	3	4	81	4
WPOC.HAY725A-4P	Hayward SwimClear C-4025, C-4030, open w/ molded gasket	7	25 1/2	3	3	4	106	4
WPOC.HAY732A-4P	Hayward SwimClear C5025, C5030, open w/ molded gasket	7	32 3/4	3	3	4	131	4
WPOC.HAY714H-4P	Hayward Easy Clear C400, C-410, open w/ molded gasket	7	14 3/16	3	3	4	40	4
WPOC.HAY714HM-4P	Hayward Easy Clear C400, C-410, open w/molded gasket (Antimicrobial)	7	14 3/16	3	3	4	40	4
WPOC.HAY709E-4P	Hayward, Star-Clear C250, open w/molded gasket	7	9 11/16	3	3	4	25	4
WPOC.HAY714K-4P	Hayward, Super-Star-Clear C2000, SwimClear C2020, Sta-Rite PRC 50, open w/molded gasket	7	14 3/16	3	3	4	50	4
WPOC.HAY719E-4P	Hayward Star-Clear C500, Pentair Purex CF-50, open/w molded gasket	7	19 5/8	3	3	4	50	4
WPOC.HAY719F-2P	Hayward Easy Clear C550, open w/molded gasket	7	19 5/8	3	3	4	55	2
WPOC.HAY729D	Hayward Star-Clear C750, open w/molded gasket	7	29 3/8	3	3	4	75	1

POOL | 7"

BY MEASUREMENT

ONCORE PART #	DESCRIPTION	OD INCHES	LENGTH INCHES	TOP HOLE INCHES	BOTTOM HOLE INCHES	MEDIA WEIGHT OZ / YD2	MEDIA SQ FT	CASE QTY
WPOC.HAY729DM	Hayward Star-Clear C750, open w/molded gas- ket (Antimicrobial)	7	29 3/8	3	3	4	75	1
WPOC.HAY719G-4P	Hayward C-570, SwimClear C3020, Super-Star- Clear C3000, C3000S (stainless steel) Sta-Rite PRC 75, open w/molded gasket	7	19 5/8	3	3	4	75	4
WPOC.HAY725B-4P	Hayward Super-Star-Clear C4000, SwimClear C4020, Super-Star-Clear C4000S (stainless steel), open w/molded gasket	7	25 1/2	3	3	4	100	4
WPOC.HAY725BM-4P	Hayward Super-Star-Clear C4000, SwimClear C4020, Super-Star-Clear C4000S (stainless steel), open w/molded gasket (Antimicrobial)	7	25 1/2	3	3	4	100	4
WPOC.HAY725C-4P	Hayward Super-Star-Clear C-4500, SwimClear C-4520, Pentair Purex CF 105, open w/molded gasket	7	25 1/2	3	3	4	112	4
WPOC.HAY725CM-4P	Hayward Super-Star-Clear C-4500, SwimClear C-4520, Pentair Purex CF 105, open w/molded gasket (Antimicrobial)	7	25 1/2	3	3	4	112	4
WPOC.HAY732B-4P	Hayward Super-Star-Clear C5000 SwimClear C5020, open w/molded gasket	7	32 3/4	3	3	4	126	4
WPOC.HAY732C-4P	Hayward Super-Star-Clear C5500 SwimClear C5520, open w/molded gasket	7	32 3/4	3	3	4	137	4
WPOC.HAY732CM-4P	Hayward Super-Star-Clear C5500 SwimClear C5520, open w/molded gasket (Antimicrobial)	7	32 3/4	3	3	4	137	4
WPOC.JAN726B-4P	Jandy Industries CL340, CV340	7 1/8	26 15/16	3	3	4	85	4
WPOC.JAN726C-4P	Jandy Industries CL460, CV460	7 1/8	26 15/16	3	3	4	115	4
WPOC.JAN726CM-4P	Jandy Industries CL460, CV460 (Antimicrobial)	7 1/8	26 15/16	3	3	4	115	4
WPOC.JAN732E-4P	Jandy Industries CL580, CV580	7 1/8	32 7/8	3	3	4	145	4
WPOC.JAN714L-2P	Jandy Industries CT-50 (open w/step), Waterco Trimline CC-50 (open w/step)	7 1/4	14 5/8	3 1/16	3 1/16	4	50	2
WPOC.JAN719H-2P	Jandy Industries CT-75 (open w/step), Waterco Trimline C-75 (open w/step)	7 1/4	19 1/2	3 1/16	3 1/16	4	75	2
WPOC.JAN729E-2P	Jandy Industries CT-100, Waterco Trimline CC- 100	7 1/4	29 3/8	3 1/16	3 1/16	4	100	2
WSOC.OXY728A-2P	Advantage Electric 150	7 1/4	28 9/16	3	3	3	150	2
WSOC.OXY714A-2P	Advantage Electric 75	7 1/4	14 5/8	2 15/16	2 15/16	3	75	2
WPOC.PLC732G	Poolco150	7	32 1/4	3	3	4	150	1
WPOC.PLC725F	Poolco120	7	25 1/5	3	3	4	120	1
WPOC.PNC726E-4P	Pentair Pentair Clean & Clear Plus 520 (pre 1998) / American Quantum, CM, RPM, 125/500	7	26	3	3	4	125	4
WPOC.PNC714T-4P	Pentair Clean & Clear Plus 240, American Quan- tum, (4 required)	7	14 1/8	3	3	4	60	4
WPOC.PNC720B-4P	Pentair Clean & Clear Plus 320, (4 required)	7	20 1/16	3	3	4	80	4
WPOC.PNC726F-4P	Pentair Clean & Clear Plus 420, Waterway Crystal Water	7	26	3	3	4	105	4
WPOC.PNC726FM-4P	Pentair Clean & Clear Plus 420, Waterway Crys- tal Water (Antimicrobial)	7	26	3	3	4	105	4
WPOC.PNC732F-4P	Pentair Clean & Clear Plus 520	7	32	3	3	4	130	4
WPOC.PNC732FM-4P	Pentair Clean & Clear Plus 520 (Antimicrobial)	7	32	3	3	4	130	4
WPOC.PNF711C-4P	Pentair / Pac Fab Mytilus FMY 50	7 7/8	11 1/8	3 1/16	3 1/16	4	50	4

POOL | 7"

BY MEASUREMENT

ONCORE PART #	DESCRIPTION	OD INCHES	LENGTH INCHES	TOP HOLE INCHES	BOTTOM HOLE INCHES	MEDIA WEIGHT OZ / YD2	MEDIA SQ FT	CASE QTY
WPOC.PNF714U-2P	Pentair / Pac Fab Mytilus-B 60 GPM MY 60, Mi- tra 60 GPM MA-60/160, Mytilus 60 60 GPM MY 60, Mytilus-B 140 GPM MY 140 (2 required), Wet Institute Modufilter M-180 (3 required)	7 7/8	14 1/16	3 1/16	3 1/16	4	60	2
WPOC.PNF722C-2P	Pentair / Pac Fab Mytilus 80 80 GPM MY 80, Mitra 80 GPM MA-80, Mytilus-B GPM MY 80, Mytilus FMY 80	7 7/8	22 1/8	3 1/16	3 1/16	4	80	2
WPOC.PNF722D-2P	Pentair / Pac Fab Mytilus B 100 GPM MA- 100/160, Mitlus FMY 100, Mytilus 100 GPM MY 100, Mitra 100 GPM MA-100-160, Wet Institute Modufilter M-330 (3 required)	7 7/8	22 1/8	3 1/16	3 1/16	4	100	2
WPOC.PNF733A	Pentair / Pac Fab My 150, GPM Pac-Fab, Mytilus FMY150	7 7/8	33 3/8	3 1/16	3 1/16	4	150	1
WPOC.PNF718B-2P	Pentair / Pac Fab Seahorse 75; 300, (4 required) (Stainless Steel Tank) Sea Horse FSH-300 (Fiber- glass Tank)	7	18 7/16	2 5/8	2 5/8	4	75	2
WPOC.PNF724A-2P	Pentair / Pac Fab Seahorse 400 Stainless/Fiber- glass Tank	7	24 7/16	2 5/8	2 5/8	4	100	2
WPOC.PNF730A	Pentair / Pac Fab Seahorse 500 (Stainless Steel Tank), Sea Horse FSH-500 (Fiberglass Tank), (4 required)	7	30 7/16	2 5/8	2 5/8	4	125	1
WPOC.PNX711D-4P	Pentair Purex CF 40, CFW Filter CF-40/120, CFM Filter CF-40/120, (3 required)	7	11 1/8	2 15/16	2 15/16	4	40	4
WPOC.PNX719P-2P	Pentair Purex CF 60 CF-60/180 (3 required)	7	19 5/8	2 15/16	2 15/16	4	60	2
WPOC.PNX716B-2P	Pentair Purex CFW Filter CFW-67.5/405, (6 required), (Tango Pools)	7	16	2 15/16	2 15/16	4	68	2
WPOC.PNX725E-2P	Pentair Purex CF 105 CF-105/315 (3 required)	7	25 5/8	2 15/16	2 15/16	4	105	2
WPOC.STR719Q-2P	Sta-Rite Posi-clean FCP50, TXC50, TXC50B, FCP50B, FCP100, TXC 100	7	19 7/16	3	3	4	50	2
WPOC.STR729J-2P	Sta-Rite Posi-clean TXC75, FCP75	7	29	3	3	4	75	2
WPOC.WAC719T-2P	Waterco C-50	7 1/4	19 11/16	3	3	4	50	2

POOL

8”

BY MEASUREMENT

ONCORE PART #	DESCRIPTION	OD INCHES	LENGTH INCHES	TOP HOLE INCHES	BOTTOM HOLE INCHES	MEDIA WEIGHT OZ / YD2	MEDIA SQ FT	CASE QTY
WPOC.HAY828A	Hayward Star-Clear Plus C1900, open w/molded gasket	8 15/16	28 3/16	4	4	4	190	1
WPOC.HAY817A	Hayward C751, Sta-Rite PXC-75 open w/molded gasket	8 15/16	17 3/8	4	4	4	75	1
WPOC.HAY817B	Hayward Star-Clear II C800 Star-Clear II C1500, open w/molded gasket	8 1/2	17 3/8	4	4	4	75	1
WPOC.HAY817C	Hayward X-Stream CC100, open w/molded gasket	8 15/16	17 3/8	4	4	4	100	1
WPOC.HAY817CM	Hayward X-Stream CC100, open w/molded gasket (Antimicrobial)	8 15/16	17 3/8	4	4	4	100	1
WPOC.HAY823A	Hayward X-Stream CC150	8 15/16	23 1/4	4	4	4	150	1
WPOC.HAY823AM	Hayward X-Stream CC150 (Antimicrobial)	8 15/16	23 1/4	4	4	4	150	1
WPOC.HAY823L	Hayward X-Stream 175	8 15/16	23 1/4	4	4	4	175	1
WPOC.HAY829A	Hayward X-Stream 200	8 15/16	29 7/16	4	4	4	200	1
WPOC.HAY823B	Hayward Star-Clear II C1100, open w/ molded gasket	8 1/2	23 5/16	4	4	4	100	1
WPOC.HAY823BM	Hayward Star-Clear II C1100, open w/ molded gasket (Antimicrobial)	8 1/2	23 5/16	4	4	4	100	1
WPOC.HAY817D	Hayward Star-Clear Plus C900, Sta-Rite PXC-95 open w/molded gasket	8 15/16	17 3/8	4	4	4	90	1
WPOC.HAY817DM	Hayward Star-Clear Plus C900, Sta-Rite PXC-95 open w/molded gasket (Antimicrobial)	8 15/16	17 3/8	4	4	4	90	1
WPOC.HAY823C	Hayward Star-Clear Plus C1200	8 15/16	23 1/4	4	4	4	120	1
WPOC.HAY823CM	Hayward Star-Clear Plus C1200 (Antimicrobial)	8 15/16	23 1/4	4	4	4	120	1
WPOC.HAY828B	Hayward Star-Clear Plus C1750, Sta-Rite PXC-175, open w/molded gasket	8 15/16	28 3/16	4	4	4	175	1
WPOC.HAY828BM	Hayward Star-Clear Plus C1750, Sta-Rite PXC-175, open w/molded gasket (Antimicrobial)	8 15/16	28 3/16	4	4	4	175	1
WPOC.JAN823E	Jandy Industries CS 100	8 15/16	23 5/16	4	4	4	100	1
WPOC.JAN823EM	Jandy Industries CS 100 (Antimicrobial)	8 15/16	23 5/16	4	4	4	100	1
WPOC.JAN823G	Jandy Industries CS 150	8 15/16	23 5/16	4	4	4	150	1
WPOC.JAN833A	Jandy Industries CS 200	8 15/16	33 1/8	4	4	4	200	1
WPOC.JAN833AM	Jandy Industries CS 200 (Antimicrobial)	8 15/16	33 1/8	4	4	4	200	1
WPOC.JAN833C	Jandy Industries CS 250	8 15/16	33 1/8	4	4	4	250	1
WPOC.WWY828D	Sta-Rite Posi Clear PXC-150, Waterway	8 15/16	28 1/4	4	4	4	150	1
WPOC.WWY828DM	Sta-Rite Posi Clear PXC-150, Waterway (Antimicro-bial)	8 15/16	28 1/4	4	4	4	150	1
WPOC.WWY817F	Waterway Clearwater II Pro-Clean 75 above ground pool cartridge 817-0075N	8 15/16	17 3/8	4	4	4	75	1
WPOC.WWY823H	Waterway Clearwater II, Pro-Clean 150 above ground pool cartridge	8 15/16	23 1/4	4	4	4	150	1
WPOC.WWY823HM	Waterway Teleweir 50 (Antimicrobial)	8 15/16	23 1/4	4	4	4	150	1
WPOC.WWY823K	Waterway Clearwater II 200 ctidge, p/n 817-0200N	8 15/16	23 1/4	4	4	4	200	1
WPOC.WWY828C	Waterway Proclear 125, 2006 and prior, Sta Rite Posi Clear PXC-125 open w/molded gasket	8 15/16	28 1/4	4	4	4	125	1
WPOC.HAY817G	upgrade to Hayward X-Stream CC100, open w/ molded gasket	8 15/16	17 3/8	4	4	4	125	1

POOL

9”

BY MEASUREMENT

ONCORE PART #	DESCRIPTION	OD INCHES	LENGTH INCHES	TOP HOLE INCHES	BOTTOM HOLE INCHES	MEDIA WEIGHT OZ / YD2	MEDIA SQ FT	CASE QTY
WPOC.HAY914A	Hayward ASL Full Flo C850	9 1/4	14 3/16	3	3	4	85	1
WPOC.HAY914AM	Hayward ASL Full Flo C850 (Antimicrobial)	9 1/4	14 3/16	3	3	4	85	1
WPOC.HAY919A	Hayward ASL Full-Flo C1250, C1500	9 1/4	19 5/8	3	3	4	125	1

POOL

10”

BY MEASUREMENT

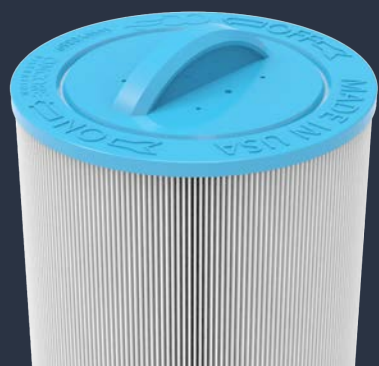
ONCORE PART #	DESCRIPTION	OD INCHES	LENGTH INCHES	TOP HOLE INCHES	BOTTOM HOLE INCHES	MEDIA WEIGHT OZ / YD2	MEDIA SQ FT	CASE QTY
WPOC.HAYJ19D	Hayward C100S	10 1/16	19 1/2	4	4	4	150	1
WPOC.HAYJ19DM	Hayward C100S (Antimicrobial)	10 1/16	19 1/2	4	4	4	150	1
WPOC.HAYJ23C	Hayward C150S	10 1/16	23 1/8	4	4	4	200	1
WPOC.HAYJ23CM	Hayward C150S (Antimicrobial)	10 1/16	23 1/8	4	4	4	200	1
WPOC.HAYJ28A	Hayward C200S	10 1/16	28 3/16	4	4	4	200	1
WPOC.JCZJ14A	Jacuzzi Brothers Sherlock 80	10	14 5/8	Handle	6	4	80	1
WPOC.JCZJ20A	Jacuzzi Brothers Sherlock 120	10	20 1/2	Handle	6	4	120	1
WPOC.JCZJ24A	Jacuzzi Brothers Sherlock 160	10	24 5/16	Handle	6	4	160	1
WPOC.JCZJ24AM	Jacuzzi Brothers Sherlock 160 (Antimicrobial)	10	24 5/16	Handle	6	4	160	1
WPOC.JCZJ30A	Jacuzzi Brothers Sherlock 200	10	30 3/16	Handle	6	4	200	1
WPOC.JCZJ10A-2P	Jacuzzi CFR/CFT 50	10 1/8	10 1/16	5 15/16	6	4	50	2
WPOC.JCZJ14B	Jacuzzi CFR/CFT 75	10 1/8	14 5/16	5 15/16	6	4	75	1
WPOC.JCZJ19A	Jacuzzi CFR/CFT 100	10 1/8	19 15/16	5 15/16	6	4	100	1
WPOC.JCZJ24C	Jacuzzi CFR/CFT 150	10 1/8	24 1/16	5 15/16	6	4	150	1
WPOC.JCZJ24D	Jacuzzi CFR/CFT-200	10 1/8	24 1/16	5 15/16	6	4	200	1
WPOC.JCZJ24DM	Jacuzzi CFR/CFT-200 (Antimicrobial)	10 1/8	24 1/16	5 15/16	6	4	200	1
WPOC.PNAJ08A-3P	Predator 50 - Pentair Clean & Clear 50	10 1/8	8 9/16	6	6	4	50	3
WPOC.PNAJ16A	Predator 75 - Pentair Clean & Clear 75, Cal Spas	10 1/8	16 1/8	6	6	4	75	1
WPOC.PNAJ23A	Predator 100 - Pentair Clean & Clear 100	10 1/8	23 5/8	6	6	4	100	1
WPOC.PNAJ31A	Predator 150 - Pentair Clean & Clear 150	10 1/8	31 1/8	6	6	4	150	1
WPOC.PNAJ31B	Predator 200 - Pentair Clean & Clear 200	10 1/8	31 1/8	6	6	4	200	1
WPOC.PNAJ23B	added fabric upgrade to Predator 100 - Pentair Clean & Clear 100	10 1/8	23 5/8	6	6	4	125	1
WPOC.PNAJ31C	Upgrade to Predator 150	10 1/8	31 1/8	6	6	4	175	1
WPOC.WWYJ23C	Waterway Eco-Kleer 150	10 1/8	23.125	6	6	4	150	1
WPOC.WWYJ23D	Waterway Eco-Kleer 200	10 1/8	23.125	6	6	4	200	1
WPOC.WWYJ13A	Waterway Pool 75, Leisure Bay WW-50	10 1/8	13 1/4	6	6	4	75	1
WPOC.WWYJ19C	Waterway Pool 100, Leisure Bay WW-100	10 1/8	19 1/4	6	6	4	100	1
WPOC.WWYJ25A	Waterway 200 Clearwater Cartridge	10 1/8	25 1/4	6	6	4	200	1
WPOC.WWYJ25B	Waterway Pool 150, Leisure Bay WW-150	10 1/8	25 1/4	6	6	4	150	1

ONCORE EVERCLEAR™

POINT BOND SPA REPLACEMENT FILTERS

OUR RUGGED & FINEST POOL CARTRIDGE LINE

These replacement filters have an injection-molded core made from 100% virgin ABS or PP. The cores are wrapped with our finest high-filament count spun-bond polyester. Then capped with robust end caps made from a chlorine and mildew resistant urethane. This time-tested process creates a filter that is easy to use and resistant to cracking and chemical deterioration.



ONCORE EVERFLOW+™

ANTIMICROBIAL SPA REPLACEMENT FILTERS

MILDEW AND BACTERIA RESISTANT LINE

These pool replacement filters are made to prevent mildew and bacteria build up on the cartridge. Each filter has an injection-molded core made from 100% virgin ABS or PP. Our EverFlow+ antimicrobial high-filament count spun-bond polyester is wrapped around the cores. Then capped with robust end caps made from a chlorine and mildew resistant urethane system. This time-tested process creates a filter that is easy to use and resistant to cracking and chemical deterioration.



SPA REPLACEMENT FILTERS



BY MEASUREMENT

SPA | 4”

BY MEASUREMENT

ONCORE PART #	DESCRIPTION	OD INCHES	LENGTH INCHES	TOP HOLE INCHES	BOTTOM HOLE INCHES	MEDIA WEIGHT OZ / YD2	MEDIA SQ FT	CASE QTY
WSOC.DRM408D-6P	Dream Maker Spas	4 3/4	8 1/8	Handle	1 1/2" MPT	3	25	6
WSOC.DRM408DM-6P	Dream Maker Spas (Antimicrobial)	4 3/4	8 1/8	Handle	1 1/2" MPT	3	25	6
WSOC.GTS409A-6P	After Hours Spas, Nemco Spas, Threaded 25, Top Load	4 5/8	9 3/4	Handle	1 1/2" MPT	3	25	6
WSOC.HRC406C-6P	4 5/8 X 6 3/4, TSC, Top Load	4 5/8	6 3/4	Handle	1 1/2" MPT	3	25	6
WSOC.PLT408N-6P	Pageant Spa Top Load	4 5/8	8	Handle	1 1/2" MPT	3	18	6
WSOC.PLT411J-6P	Advanced/LA Spas, Top Load	4 5/8	11 7/8	Handle	1 1/2" MPT	3	25	6
WSOC.PLT414B-6P	Advanced/LA Spas/ Nemco Spas	4 5/8	14 3/4	Handle	1 1/2" MPT	3	50	6
WSOC.PLT415A-6P	Hot Spring Spas (Watkins), Top Load	4 5/8	15	Handle	1 1/2" MPT	3	35	6
WSOC.SRG405A-6P	Saratoga Spas	4 5/8	5 15/16	Handle	1 1/2" MPT	3	14	6
WSOC.SRG415B-6P	Saratoga Spas Top Load	4 5/8	15 1/4	Handle	1 1/2" MPT	3	40	6
WSOC.SRG411L-6P	Saratoga Spas Circulation Pump	4 5/8	11 3/8	Handle	1 1/2" MPT	3	28	6
WSOC.STG408P-6P	Futura Spa (Strong Industries)	4 5/8	8	Handle	1 1/2" SAE	3	20	6
WSOC.WWY404B-18P	Waterway Skim Filter 10	4 1/4	4	2 1/16	2 1/16	3	10	18
WSOC.MAS408Q-6P	FILTER, 20SF 2"MPT	4 5/8	8 1/16	Handle	2" MPT	3	20	6
WSOC.MAS404C-12P	Threaded Top Load Filter	4	4	Handle	1 1/2" SAE	3	15	12

SPA | 5”

ONCORE PART #	DESCRIPTION	OD INCHES	LENGTH INCHES	TOP HOLE INCHES	BOTTOM HOLE INCHES	MEDIA WEIGHT OZ / YD2	MEDIA SQ FT	CASE QTY
WSOC.CAL516A-6P	Cal Spa Victory 60	5 3/16	16	Handle	2" MPT	3	60	6
WSOC.CAL516AM-6P	Cal Spa Victory 60 (Antimicrobial)	5 3/16	16	Handle	2" MPT	3	60	6
WSOC.CAL523A-6P	Waterway In-Line 75	5	23 5/8	2 1/8	2 1/8	3	75	6
WSOC.CAL523B-6P	Waterway 100, Cal Spas	5	23 5/8	2 1/8	2 1/8	3	100	6
WSOC.CST521A-4P	Coast Spas Top load (in-line) 100, Waterway Plastics	5 3/8	21 5/16	2 1/8	2 1/8	3	80	4
WSOC.CST530A-4P	Coast Spas Top load (in-line) 135, Waterway Plastics	5 3/8	30 1/8	2 1/8	2 1/8	3	120	4
WSOC.FFL506D-6P	Freeflow Lagas, CLX	5	6 5/8	2 1/8	1 1/2" MPT	3	25	6
WSOC.FFL506C-6P	Freeflow Lagas, TLX, RLX	5	6 5/8	Closed	1 1/2" MPT	3	25	6
WSOC.FFL510A-6P	Freeflow Spas Legend	5 5/16	10	2 1/8	1 1/2" MPT	3	50	6
WSOC.FFL509A-6P	Freeflow 2013 - current	5 1/4	9 3/8	Closed - String Handle	1 1/2" MPT	3	42	6
WSOC.FFL509AM-6P	Freeflow 2013 - current (Antimicrobial)	5 1/4	9 3/8	Closed - String Handle	1 1/2" MPT	3	42	6
WSOC.JCW510C-6P	Jacuzzi Whirlpool 50, C/top, Front Load	5 11/16	10 3/8	Loop with String Handle	2 1/8	3	50	6

SPA | 5”

BY MEASUREMENT

ONCORE PART #	DESCRIPTION	OD INCHES	LENGTH INCHES	TOP HOLE INCHES	BOTTOM HOLE INCHES	MEDIA WEIGHT OZ / YD2	MEDIA SQ FT	CASE QTY
WSOC.JCW510D-6P	Jacuzzi Aero, Caressa, C/top	5 11/16	10 3/8	Loop with String Handle	2 1/8	3	23	6
WSOC.JCW510L-6P	Jacuzzi Hermosa, Redondo, Del Sol Spas	5 3/16	10 5/8	Handle	2" MPT	3	40	6
WSOC.JCZ513B-6P	Jacuzzi CFR/CFT 25	5	13 5/16	2 3/8	2 3/8	4	25	6
WSOC.JCZ513C-6P	Jacuzzi CFR/CFT 37	5	13 5/16	2 3/8	2 3/8	4	37	6
WSOC.JCZ513D-6P	Jacuzzi CFR/CFT 15	5	13 5/16	2 3/8	2 3/8	4	15	6
WSOC.LAS508A-6P	LA Spas replacement for bag filter	5 3/8	8 9/16	Handle	3" MPT	3	35	6
WSOC.LAS508AM-6P	LA Spas replacement for bag filter (Antimicrobial)	5 3/8	8 9/16	Handle	3" MPT	3	35	6
WSOC.LBS510E-6P	Leisure Bay, Dynasty Spas, Waterway, Rainbow	5 5/16	10 1/8	2 1/8	2 1/8	3	50	6
WSOC.LBS510EM-6P	Leisure Bay, Dynasty Spas, Waterway, Rainbow (Antimicrobial)	5 5/16	10 1/8	2 1/8	2 1/8	3	50	6
WSOC.LBS514A-4P	Rainbow, Waterway, Leisure Bay, S2/G2 Spa 75	5 5/16	14 3/4	2 1/8	2 1/8	3	75	4
WSOC.LBS514AM-4P	Rainbow, Waterway, Leisure Bay, S2/G2 Spa 75 (Antimicrobial)	5 5/16	14 3/4	2 1/8	2 1/8	3	75	4
WSOC.LBS517C-4P	Rainbow, Waterway, Leisure Bay, S2/G2 Spa 100	5 5/16	17 3/4	2 1/8	2 1/8	3	100	4
WSOC.MAX508C-6P	Maax Spas of Canada, 25 SF, 1 1/2" MPT THREAD	5 5/8	8	Handle	1 1/2" MPT	3	25	6
WSOC.MAX508D-6P	Maax Spas of Canada, 50 SF, 1 1/2" ACME THREAD	5 5/8	8	Handle	1 1/2" SAE	3	50	6
WSOC.MAX508B-6P	Maax Spas of Canada, 50 SF, 1 1/2" MPT THREAD	5 5/8	8	Handle	1 1/2" MPT	3	50	6
WSOC.MAX508BM-6P	Maax Spas of Canada, 50 SF, 1 1/2" MPT THREAD (Antimicrobial)	5 5/8	8	Handle	1 1/2" MPT	3	50	6
WSOC.MTC514C-6P	Sonfarrel 50-220152, Cal Spas, Martec, Advan-tage Mfg.	5	14 7/8	2 1/8	2 1/8	3	50	6
WSOC.MTC514D-6P	Sonfarrel 45	5	14 7/8	2 1/8	2 1/8	3	45	6
WSOC.PMQ512C-6P	Pacific Marquis Spas	5 3/16	12 1/4	Handle	2" MPT	3	50	6
WSOC.PMQ512CM-6P	Pacific Marquis Spas (Antimicrobial)	5 3/16	12 1/4	Handle	2" MPT	3	50	6
WSOC.PMQ512E-6P	Pacific Marquis Spas	5 3/16	12 1/4	Handle	2" MPT	3	35	6
WSOC.PMQ512EM-6P	Pacific Marquis Spas (Antimicrobial)	5 3/16	12 1/4	Handle	2" MPT	3	35	6
WSOC.RBW513E-6P	Dynamic Series II & III - RTL/RCF, Series I - Model RDC, Series IV - DFM, DFML, Waterway	5	13 5/16	2 1/8	2 1/8	4	25	6
WSOC.RBW513G-6P	Dynamic Series I RDC-25, I RDC-25S, Dynam-ic Series II & II RTL/RCF-25, Dynamic Series IV-DFM, DFML, Waterway 25 In-Line, Custom Molded Products	5	13 5/16	2 1/8	2 1/8	3	25	6
WSOC.RBW-513GM-6P	Dynamic Series I RDC-25, I RDC-25S, Dynam-ic Series II & II RTL/RCF-25, Dynamic Series IV-DFM, DFML, Waterway 25 In-Line, Custom Molded Products (Antimicrobial)	5	13 5/16	2 1/8	2 1/8	3	25	6
WSOC.RBW513J-6P	Dynamic Series I RDC-25, I RDC-25S, Series IV - DFM, DFML, Series II & KKK RTL/RCF-25, Wa-terway, Morgan Spas, Leisure Bay Spas, Custom Molded Products	5	13 5/16	2 1/8	2 1/8	3	37	6
WSOC.RBW509D-6P	Dynamic Series IV - DFM, DFML, Waterway 35, In-Line	5	9 1/4	2 1/8	2 1/8	3	35	6

SPA | 5”

BY MEASUREMENT

ONCORE PART #	DESCRIPTION	OD INCHES	LENGTH INCHES	TOP HOLE INCHES	BOTTOM HOLE INCHES	MEDIA WEIGHT OZ / YD2	MEDIA SQ FT	CASE QTY
WSOC.RB-W509DM-6P	Dynamic Series IV - DFM, DFML, Waterway 35, In-Line (Antimicrobial)	5	9 1/4	2 1/8	2 1/8	3	35	6
WSOC.RBW504A-12P	Dynamic Series IV - Model DSF 35, Waterway	5	4 5/8	2 1/8	2 3/16	3	35	12
WSOC.RBW506B-12P	Dynamic Series IV, Model DSF, DFML-25C, Waterway	5	6 5/8	2 1/8	2 1/8	3	50	12
WSOC.RBW513K-6P	Dynamic Series IV - DFM, DFML, Series II & III RTL/RCF-50, Series I RDC-50, RDC-50S, Waterway, Custom Molded Products	5	13 5/16	2 1/8	2 1/8	3	50	6
WSOC.RBW513KM-6P	Dynamic Series IV - DFM, DFML, Series II & III RTL/RCF-50, Series I RDC-50, RDC-50S, Waterway, Custom Molded Products (Antimicrobial)	5	13 5/16	2 1/8	2 1/8	3	50	6
WSOC.RBW520A-6P	Dynamic Series V-DSC-75, Series II & III RTL/RCF-75, Custom Molded Products	5	20 1/8	2 1/8	2 1/8	3	75	6
WSOC.RB-W520AM-6P	Dynamic Series V-DSC-75, Series II & III RTL/RCF-75, Custom Molded Products (Antimicrobial)	5	20 1/8	2 1/8	2 1/8	3	75	6
WSOC.RBW526A-4P	Dynamic Series II & III RTL/RCF-100, Series V-DSC-100	5	26 1/2	2 1/8	2 1/8	3	100	4
WSOC.SAN510J-6P	Santana 25, Open Top	5	10 1/16	2 1/8	2 1/8	3	25	6
WSOC.SAN517D-6P	Santana 45	5	17 5/8	2 1/8	2 1/8	3	45	6
WSOC.WTK510K-6P	Watkins Hot Spring Spas	5 7/8	10 3/8	1 15/16	1 15/16	3	30	6
WSOC.WWY509N-6P	Waterway Teleweir 35	5	9 1/4	Handle	1 1/2" FEMALE SAE	3	35	6
WSOC.WWY509NM-6P	Waterway Teleweir 35 (Antimicrobial)	5	9 1/4	Handle	1 1/2" FEMALE SAE	3	35	6
WSOC.WWY513P-6P	Waterway Teleweir 50	5	13 3/16	Handle	1 1/2" FEMALE SAE	3	50	6
WSOC.WWY513PM-6P	Waterway Teleweir 50 (Antimicrobial)	5	13 3/16	Handle	1 1/2" FEMALE SAE	3	50	6
WSOC.WWY511H-6P	Waterway 40, In-Line	5	11 5/16	2 1/8	2 1/8	3	40	6
WSOC.MAS508E-6P	FILTER WHT 25SQ NO INNER	5	8 1/2	Handle	1 1/2" FEMALE SAE	3	25	6

SPA | 6”

BY MEASUREMENT

ONCORE PART #	DESCRIPTION	OD INCHES	LENGTH INCHES	TOP HOLE INCHES	BOTTOM HOLE INCHES	MEDIA WEIGHT OZ / YD2	MEDIA SQ FT	CASE QTY
WSOC.ARS607A-4P	Artesian Spas 50	6 3/4	7 7/8	Handle	2" MPT	3	50	4
WSOC.ARS607B-6P	New Artesian 6" D Spa	6	7 5/8	Handle	2" MPT	3	40	6
WSOC.ARS607BM-6P	New Artesian 6" D Spa (Antimicrobial)	6	7 5/8	Handle	2" MPT	3	40	6
WSOC.JCW615A-2P	Jacuzzi Premium J-300, J400 (injection molded handle not included)	6 5/8	15 1/2	Open Top	2" SAE	3	60	2
WSOC.JCW615B-2P	Jacuzzi Premium J-300, J400	6 5/8	15 1/2	Handle	2" SAE	3	60	2
WSOC.MAS609D-6P	Master Spas Twilight	6	9 1/4	Handle	2" MPT	3	40	6
WSOC.MAS609DM-6P	Master Spas Twilight (Antimicrobial)	6	9 1/4	Handle	2" MPT	3	40	6
WSOC.MAS608A-4P	Master Spas outer cartridge for PMA-PROPAK2-M (Antimicrobial)	6 1/2	8	4 1/16	4 1/16	3	25	4
WSOC.MAS608AM-4P	Master Spas outer cartridge for PMA-PROPAK2-M (Antimicrobial)	6 1/2	8	4 1/16	4 1/16	3	25	4
WSOC.PLT605A-6P	Softub; Leisure Bay; 6 x 5 1/2, TSC	6	5 1/2	Handle	1 1/2" MPT	3	20	6
WSOC.PLT606A-6P	American Spas; Artesian (Coleman)	6	6 1/2	Handle	1 1/2" MPT	3	25	6
WSOC.PLT608E-6P	Advanced/LA Spas; Aber Hottub	6	8 3/4	Handle	1 1/2" MPT	3	47	6
WSOC.PLT609A-4P	DFA Spas; Arizona Pacific	6	9 13/16	Handle	1 1/2" MPT	3	35	4
WSOC.PLT611A-4P	Master Spas; Freedom Spas	6	11 15/16	Handle	1 1/2" MPT	3	45	4
WSOC.PLT613A-4P	Advanced/LA Spas	6	13 3/16	Handle	1 1/2" MPT	3	50	4
WSOC.PLT614A-2P	Caribbean/Catalina; Jetta Spas; Wild Water Spa	6	14 13/16	Handle	1 1/2" MPT	3	60	2
WSOC.PLT613B-3P	Seven Seas Spas	6	13 3/8	Handle	1 1/2" MPT	3	40	3
WSOC.PLT609B-6P	Four Seasons Spa	6	9 3/4	Handle	1 1/2" MPT	3	25	6
WSOC.PLT614B-3P	Advanced Spa 75	6	14 13/16	Handle	1 1/2" MPT	3	50	3
WSOC.SUN607C-6P	Top Load, Sunrise Modification	6	7 7/8	Handle	1 1/2" MPT	3	50	6
WSOC.WTK614C-4P	Watkins Hot Spring Spas	6 3/8	14	1 15/16	1 15/16	3	35	4
WSOC.WTK614D-4P	Watkins Hot Spring Spas	6 3/8	14	1 15/16	1 15/16	3	70	4
WSOC.WWY607D-6P	Waterway Front Access Skimmer (2 required)	6	7 5/8	Handle	1 1/2" SAE	3	50	6
WSOC.WWY607DM-6P	Waterway Front Access Skimmer, Aber Hot Tubs, (Antimicrobial)	6	7 5/8	Handle	1 1/2" SAE	3	38	6

SPA | 7"

BY MEASUREMENT

ONCORE PART #	DESCRIPTION	OD INCHES	LENGTH INCHES	TOP HOLE INCHES	BOTTOM HOLE INCHES	MEDIA WEIGHT OZ / YD2	MEDIA SQ FT	CASE QTY
WSOC.ARS707A-3P	Artesian Top Load Spa (Coleman)	7 1/8	7 9/16	Handle	2" MPT	3	35	3
WSOC.ARS707AM-3P	Artesian Top Load Spa (Coleman)(Antimicrobial)	7 1/8	7 9/16	Handle	2" MPT	3	35	3
WSOC.CLD710A-2P	Caldera 50	7	10 3/4	Swivel Handle	2" Male Slip	3	50	2
WSOC.CLD714C-2P	Caldera 75	7	14 5/8	Swivel Handle	2" Male Slip	3	75	2
WSOC.CLD710B-2P	Caldera 50 (new style)	7	10 3/4	Swivel Handle	2 11/16	3	50	2
WSOC.CLD710BM-2P	Caldera 50 (new style)(Antimicrobial)	7	10 3/4	Swivel Handle	2 11/16	3	50	2
WSOC.CLD714D-2P	Caldera 75 (new style)	7	14 7/8	Swivel Handle	2 11/16	3	75	2
WSOC.DON710D-4P	Dimension One 75, @Home Hot Tubs (open w/ twist lock)	7 1/4	10 1/4	Castle Top	Special Lock Bot- tom	3	75	4
WSOC.MAS707B-4P	Master Spas Legacy / Freedom	7 1/8	7 3/16	Handle	2" MPT	3	40	4
WSOC.OXY721B-2P	Advantage Electric 100	7 1/4	21 1/2	3	3	3	100	2
WSOC.SUN707D-4P	Sunrise	7	7 7/8	Handle	1 1/2" MPT	3	50	4
WSOC.VTA709H-4P	40SF Vita Spa, Coleman, Top Load	7	9 7/8	Handle	1 1/2" MPT	3	40	4
WSOC.VTA714X-2P	Coleman, Vita Spa 7x14 3/4, TSC	7	14 13/16	Handle	1 1/2" MPT	3	50	2
WSOC.WAC709J-4P	Waterco C-25	7 1/4	9 7/8	3	3	3	25	4
WSOC.SUD705A-12P	Sundance Microclean Depth Filter	7 3/4	5	4 3/4	4 3/4	NA	NA	12

SPA | 8"

BY MEASUREMENT

ONCORE PART #	DESCRIPTION	OD INCHES	LENGTH INCHES	TOP HOLE INCHES	BOTTOM HOLE INCHES	MEDIA WEIGHT OZ / YD2	MEDIA SQ FT	CASE QTY
WSOC.SUD819D	Sundance Double End 120	8 1/2	19	2 3/16 Slip	2 3/4" bev- eled edge	3	125	1
WSOC.SUD814A	Sundance Microclean	8 1/2	14 5/8	2" SAE (Closed)	2 3/4" bev- eled edge	3	85	1
WSOC.VTA807A-4P	Vita Spa AB5-300 (Antimicrobial)	8 1/2	7 1/4	Handle	2" MPT	3	30	4
WSOC.VTA807AM-4P	Vita Spa AB5-300 (Antimicrobial)	8 1/2	7 1/4	Handle	2" MPT	3	30	4
WSOC.WTK810C-2P	Watkins Hot Spring Spas upgrade from PWK45N	8 1/2	10 1/2	3	3	3	65	2



POOL REPLACEMENT FILTERS



BY OEM
(MANUFACTURER)

POOL | 4”

BY OEM (MANUFACTURER)
+ CROSS REFERENCE

ONCORE PART #	DESCRIPTION	OD INCHES	LENGTH INCHES	TOP HOLE INCHES	BOTTOM HOLE INCHES	OEM PART #	PLEATCO	UNICEL	FILBUR
WPOC.HAY411D-6P	Hayward C-120, MicroStar-Clear (in-line)	4 5/8	11 7/8	2 1/16	2 1/16	CX120-RE	PA12	C-4312	FC-1210
WPOC.HAY411E-6P	Hayward C-200, MicroStar-Clear, American Commander II	4 5/8	11 7/8	2 1/16	2 1/16	CX200-RE	PA20	C-4320	FC-1215
WPOC.HAY411F-6P	Hayward MicroStar-Clear C225, American Commander II	4 5/8	11 7/8	2 1/16	2 1/16	CX225-RE	PA225	C-4325	FC-1220

POOL | 5”

ONCORE PART #	DESCRIPTION	OD INCHES	LENGTH INCHES	TOP HOLE INCHES	BOTTOM HOLE INCHES	OEM PART #	PLEATCO	UNICEL	FILBUR
WSOC.OXY517A-5P	Advantage Electric 50	5	17 3/8	2 1/8	2 1/8	ELE-50 Top Load	PAE50	C-4349	FC-6310

POOL | 7”

ONCORE PART #	DESCRIPTION	OD INCHES	LENGTH INCHES	TOP HOLE INCHES	BOTTOM HOLE INCHES	OEM PART #	PLEATCO	UNICEL	FILBUR
WPOC.HAY719U-4P	Hayward C7030, HCF7030, HCF7030C	7	19 1/8	3	3	CX591-XRE	PA89	C-7485	
WPOC.HAY714G-4P	Hayward SwimClear C2025	7	14 3/16	3	3	CX480-XRE	PA56SV	C-7458	FC-1223
WPOC.HAY719D-4P	Hayward SwimClear C3025, C3030, open w/molded gasket	7	19 5/8	3	3	CX580-XRE	PA81	C-7483	FC-1225
WPOC.HAY725A-4P	Hayward SwimClear C-4025, C-4030, open w/molded gasket	7	25 1/2	3	3	CX880-XRE	PA106	C-7488	FC-1226
WPOC.HAY732A-4P	Hayward SwimClear C5025, C5030, open w/molded gasket	7	32 3/4	3	3	CX1280-XRE	PA131	C-7494	FC-1227
WPOC.HAY714H-4P	Hayward Easy Clear C400, C-410, open w/molded gasket	7	14 3/16	3	3	CX410-RE	PA40	C-7442	FC-1228
WPOC.HAY714HM-4P	Hayward Easy Clear C400, C-410, open w/molded gasket (Antimicrobial)	7	14 3/16	3	3	CX410-RE	PA40	C-7442	FC-1228
WPOC.HAY709E-4P	Hayward, Star-Clear C250, open w/molded gasket	7	9 11/16	3	3	CX250-RE	PA25	C-7626	FC-1230
WPOC.HAY714K-4P	Hayward, Super-Star-Clear C2000, SwimClear C2020, Sta-Rite PRC 50, open w/molded gasket	7	14 3/16	3	3	CX470-XRE, 25200-01505	PA50SV	C-7447	FC-1235
WPOC.HAY719E-4P	Hayward Star-Clear C500, Pentair Purex CF-50, open/w molded gasket	7	19 5/8	3	3	CX500-RE, R173409, 27-079	PA50	C-7656	FC-1240
WPOC.HAY719F-2P	Hayward Easy Clear C550, open w/molded gasket	7	19 5/8	3	3	CX550-RE	PA55	C-7455	FC-1245

POOL | 7”

BY OEM (MANUFACTURER)
+ CROSS REFERENCE

ONCORE PART #	DESCRIPTION	OD INCHES	LENGTH INCHES	TOP HOLE INCHES	BOTTOM HOLE INCHES	OEM PART #	PLEATCO	UNICEL	FILBUR
WPOC.HAY729D	Hayward Star-Clear C750, open w/molded gasket	7	29 3/8	3	3	CX750-RE, R173205, 570074	PA75	C-7676	FC-1250
WPOC.HAY729DM	Hayward Star-Clear C750, open w/molded gasket (Antimicrobial)	7	29 3/8	3	3	CX750-RE, R173205, 570074	PA75-M	C-7676AM	FC-1250M
WPOC.HAY719G-4P	Hayward C-570, SwimClear C3020, Super-Star-Clear C3000, C3000S (stainless steel) Sta-Rite PRC 75, open w/molded gasket	7	19 5/8	3	3	CX570-XRE, 25200-01755	PA75SV	C-7477	FC-1260
WPOC.HAY725B-4P	Hayward Super-Star-Clear C4000, SwimClear C4020, Super-Star-Clear C4000S (stainless steel), open w/molded gasket	7	25 1/2	3	3	CX870-XRE	PA100N	C-7487	FC-1270
WPOC.HAY725BM-4P	Hayward Super-Star-Clear C4000, SwimClear C4020, Super-Star-Clear C4000S (stainless steel), open w/molded gasket (Antimicrobial)	7	25 1/2	3	3	CX870-XRE	PA100N-M	C-7487AM	FC-1270M
WPOC.HAY725C-4P	Hayward Super-Star-Clear C-4500, SwimClear C-4520, Pentair Purex CF 105, open w/molded gasket	7	25 1/2	3	3	CX875-RE	PA112	C-7489	FC-1275
WPOC.HAY725CM-4P	Hayward Super-Star-Clear C-4500, SwimClear C-4520, Pentair Purex CF 105, open w/molded gasket (Antimicrobial)	7	25 1/2	3	3	CX875-RE	PA112-M	C-7489AM	FC-1275M
WPOC.HAY732B-4P	Hayward Super-Star-Clear C5000 SwimClear C5020, open w/molded gasket	7	32 3/4	3	3	CX1260-RE	PA126	C-7495	FC-1296
WPOC.HAY732C-4P	Hayward Super-Star-Clear C5500 SwimClear C5520, open w/molded gasket	7	32 3/4	3	3	CX1380-RE	PA137	C-7490	FC-1297
WPOC.HAY732CM-4P	Hayward Super-Star-Clear C5500 SwimClear C5520, open w/molded gasket (Antimicrobial)	7	32 3/4	3	3	CX1380-RE	PA137	C-7490	FC-1297
WPOC.JAN726B-4P	Jandy Industries CL340, CV340	7 1/8	26 15/16	3	3	A0557900	PJAN85	C-7459	FC-0800
WPOC.JAN726C-4P	Jandy Industries CL460, CV460	7 1/8	26 15/16	3	3	A0558000	PJAN115	C-7468	FC-0810
WPOC.JAN726CM-4P	Jandy Industries CL460, CV460 (Antimicrobial)	7 1/8	26 15/16	3	3	A0558000	PJAN115-M	C-7468AM	FC-0810M
WPOC.JAN732E-4P	Jandy Industries CL580, CV580	7 1/8	32 7/8	3	3	A0104100	PJAN145	C-7482	FC-0820
WPOC.JAN714L-2P	Jandy Industries CT-50 (open w/step), Waterco Trimline CC-50 (open w/step)	7 1/4	14 5/8	3 1/16	3 1/16	A0103600, 62048	PJAN50	C-7448	FC-5155
WPOC.JAN719H-2P	Jandy Industries CT-75 (open w/step), Waterco Trimline C-75 (open w/step)	7 1/4	19 1/2	3 1/16	3 1/16	A0103500, 62049	PJAN75	C-7473	FC-5177
WPOC.JAN729E-2P	Jandy Industries CT-100, Waterco Trimline CC-100	7 1/4	29 3/8	3 1/16	3 1/16	A0103400, 62050	PJAN100	C-7497	FC-5180
WSOC.OXY728A-2P	Advantage Electric 150	7 1/4	28 9/16	3	3	ELE-150	PAE150	C-7303	FC-6325
WSOC.OXY714A-2P	Advantage Electric 75	7 1/4	14 5/8	2 15/16	2 15/16	ELE-75	PAE75	C-7301	FC-6315
WPOC.PLC732G	Poolco150	7	32 1/4	3	3		PPCO150		FC-3119
WPOC.PLC725F	Poolco120	7	25 1/5	3	3		PPCO120		FC-3121

POOL | 7”

BY OEM (MANUFACTURER)
+ CROSS REFERENCE

ONCORE PART #	DESCRIPTION	OD INCHES	LENGTH INCHES	TOP HOLE INCHES	BOTTOM HOLE INCHES	OEM PART #	PLEATCO	UNICEL	FILBUR
WPOC.PNC726E-4P	Pentair Pentair Clean & Clear Plus 520 (pre 1998) / American Quantum, CM, RPM, 125/500	7	26	3	3		PCC125	C-7498	FC-0695
WPOC.PNC714T-4P	Pentair Clean & Clear Plus 240, American Quantum, (4 required)	7	14 1/8	3	3	178569, R173572	PCC60	C-7469	FC-1975
WPOC.PNC720B-4P	Pentair Clean & Clear Plus 320, (4 required)	7	20 1/16	3	3	817-0081, 178580, R173573	PCC80	C-7470	FC-1976
WPOC.PNC726F-4P	Pentair Clean & Clear Plus 420, Waterway Crystal Water	7	26	3	3	817-0106, 178584, R173476	PCC105	C-7471	FC-1977
WPOC.PNC726FM-4P	Pentair Clean & Clear Plus 420, Waterway Crystal Water (Antimicrobial)	7	26	3	3	817-0106, 178584, R173476	PCC105-M	C-7471AM	FC-1977M
WPOC.PNC732F-4P	Pentair Clean & Clear Plus 520	7	32	3	3	817-0131, 178585, R173578	PCC130	C-7472	FC-1978
WPOC.PNC732FM-4P	Pentair Clean & Clear Plus 520 (Antimicrobial)	7	32	3	3	817-0131, 178585, R173578	PCC130-M	C-7472AM	FC-1978M
WPOC.PNF711C-4P	Pentair / Pac Fab Mytilus FMY 50	7 7/8	11 1/8	3 1/16	3 1/16	17-4981, R173297	PFAB50	C-7678	FC-1920
WPOC.PNF714U-2P	Pentair / Pac Fab Mytilus-B 60 GPM MY 60, Mitra 60 GPM MA-60/160, Mytilus 60 60 GPM MY 60, Mytilus-B 140 GPM MY 140 (2 required), Wet Institute Modufilter M-180 (3 required)	7 7/8	14 1/16	3 1/16	3 1/16	17-2810, 17-4983, 17-4985, 32050203, R173298	PFAB60	C-7660	FC-1930
WPOC.PNF722C-2P	Pentair / Pac Fab Mytilus 80 80 GPM MY 80, Mitra 80 GPM MA-80, Mytilus-B GPM MY 80, Mytilus FMY 80	7 7/8	22 1/8	3 1/16	3 1/16	17-2811, 17-4984, R173299	PFAB80	C-7680	FC-1940
WPOC.PNF722D-2P	Pentair / Pac Fab Mytilus B 100 GPM MA-100/160, Mitlus FMY 100, Mytilus 100 GPM MY 100, Mitra 100 GPM MA-100-160, Wet Institute Modufilter M-330 (3 required)	7 7/8	22 1/8	3 1/16	3 1/16	17-2812, 17-4985, 32050204	PFAB100	C-7699	FC-1950
WPOC.PNF733A	Pentair / Pac Fab My 150, GPM Pac-Fab, Mytilus FMY150	7 7/8	33 3/8	3 1/16	3 1/16	17-4980	PFAB150	C-7679	FC-1960
WPOC.PNF718B-2P	Pentair / Pac Fab Seahorse 75; 300, (4 required) (Stainless Steel Tank) Sea Horse FSH-300 (Fiberglass Tank)	7	18 7/16	2 5/8	2 5/8	1722840, 172877, R173316	PFAB75	C-7491	FC-2190
WPOC.PNF724A-2P	Pentair / Pac Fab Seahorse 400 Stainless/Fiberglass Tank	7	24 7/16	2 5/8	2 5/8	1722841, R173316	PFAB100SH	C-7492	FC-2192
WPOC.PNF730A	Pentair / Pac Fab Seahorse 500 (Stainless Steel Tank), Sea Horse FSH-500 (Fiberglass Tank), (4 required)	7	30 7/16	2 5/8	2 5/8	1722849, 172887, R173318	PFAB125	C-7493	FC-2194
WPOC.PNX711D-4P	Pentair Purex CF 40, CFW Filter CF-40/120, CFM Filter CF-40/120, (3 required)	7	11 1/8	2 15/16	2 15/16	07-0658, R173310	PPF40	C-7440	FC-2130
WPOC.PNX719P-2P	Pentair Purex CF 60 CF-60/180 (3 required)	7	19 5/8	2 15/16	2 15/16	07-0657, R173312	PPF60	C-7460	FC-2150
WPOC.PNX716B-2P	Pentair Purex CFW Filter CFW-67.5/405, (6 required), (Tango Pools)	7	16	2 15/16	2 15/16	07-4930, R173314	PPF67.5	C-7467	FC-2170

POOL | 7”

BY OEM (MANUFACTURER)
+ CROSS REFERENCE

ONCORE PART #	DESCRIPTION	OD INCHES	LENGTH INCHES	TOP HOLE INCHES	BOTTOM HOLE INCHES	OEM PART #	PLEATCO	UNICEL	FILBUR
WPOC.PNX725E-2P	Pentair Purex CF 105 CF-105/315 (3 required)	7	25 5/8	2 15/16	2 15/16	07-0231, R173315	PPF105	C-7496	FC-2180
WPOC.STR719Q-2P	Sta-Rite Posi-clean FCP50, TXC50, TXC50B, FCP50B, FCP100, TXC 100	7	19 7/16	3	3	2420-0016, 24241-0016, WC108-141SI	PPC50	C-7652	FC-2580
WPOC.STR729J-2P	Sta-Rite Posi-clean TXC75, FCP75	7	29	3	3	24240-0016, 24241-0016	PPC75	C-7677	FC-2590
WPOC.WAC719T-2P	Waterco C-50	7 1/4	19 11/16	3	3	62024	PWC50	C-7457	FC-5150

POOL | 8”

ONCORE PART #	DESCRIPTION	OD INCHES	LENGTH INCHES	TOP HOLE INCHES	BOTTOM HOLE INCHES	OEM PART #	PLEATCO	UNICEL	FILBUR
WPOC.JAN823E	Jandy Industries CS 100	8 15/16	23 5/16	4	4	R0462200	PJANCS100	C-8410	FC-0821
WPOC.JAN823EM	Jandy Industries CS 100 (Antimicrobial)	8 15/16	23 5/16	4	4	R0462200	PJANCS100-M	C-8410AM	FC-0821M
WPOC.JAN823G	Jandy Industries CS 150	8 15/16	23 5/16	4	4	R0462300	PJANCS150	C-8414	FC-0822
WPOC.JAN833A	Jandy Industries CS 200	8 15/16	33 1/8	4	4	R0462400	PJANCS200	C-8418	FC-0823
WPOC.JAN833AM	Jandy Industries CS 200 (Antimicrobial)	8 15/16	33 1/8	4	4	R0462400	PJANCS200-M	C-8418AM	FC-0823M
WPOC.JAN833C	Jandy Industries CS 250	8 15/16	33 1/8	4	4	R0462500	PJANCS250	C-8425	FC-0824
WPOC.WWY828D	Sta-Rite Posi Clear PXC-150, Waterway	8 15/16	28 1/4	4	4	817-0125P, 817-0150P, 25230-0150S	PWWP-C150B	C-8416	
WPOC.WWY828DM	Sta-Rite Posi Clear PXC-150, Waterway (Antimicrobial)	8 15/16	28 1/4	4	4	817-0125P, 817-0150P, 25230-0150S	PWWP-C150B-M	C-8416AM	
WPOC.WWY817F	Waterway Clearwater II Pro-Clean 75 above ground pool cartridge 817-0075N	8 15/16	17 3/8	4	4	817-0075N, 817-0075P	PWWCT75		FC-1255
WPOC.WWY823H	Waterway Clearwater II, Pro-Clean 150 above ground pool cartridge	8 15/16	23 1/4	4	4	817-0150N, 817-0150P	PWWCT150		FC-1287
WPOC.WWY823HM	Waterway Teleweir 50 (Antimicrobial)	8 15/16	23 1/4	4	4	817-0150N, 817-0150P	PWWCT150		FC-1287
WPOC.WWY823K	Waterway Clearwater II 200 ctdge, p/n 817-0200N	8 15/16	23 1/4	4	4	817-0200N	PWWCT200	C-8419	FC-1288
WPOC.WWY828C	Waterway Proclear 125, 2006 and prior, Sta Rite Posi Clear PXC-125 open w/molded gasket	8 15/16	28 1/4	4	4	25230-0125S	PWWP-C125B	C-8413	FC-2575
WPOC.HAY817G	upgrade to Hayward X-Stream CC100, open w/molded gasket	8 15/16	17 3/8	4	4		PXST125		

POOL | 9”

BY OEM (MANUFACTURER)
+ CROSS REFERENCE

ONCORE PART #	DESCRIPTION	OD INCHES	LENGTH INCHES	TOP HOLE INCHES	BOTTOM HOLE INCHES	OEM PART #	PLEATCO	UNICEL	FILBUR
WPOC.HAY914A	Hayward ASL Full Flo C850	9 1/4	14 3/16	3	3	CX850-RE	PA85	C-9485	FC-1298
WPOC.HAY914AM	Hayward ASL Full Flo C850 (Anti-microbial)	9 1/4	14 3/16	3	3	CX850-RE	PA85	C-9485	FC-1298
WPOC.HAY919A	Hayward ASL Full-Flo C1250, C1500	9 1/4	19 5/8	3	3	CX1250-RE, CX1500-RE	PA125	C-9499	FC-1299

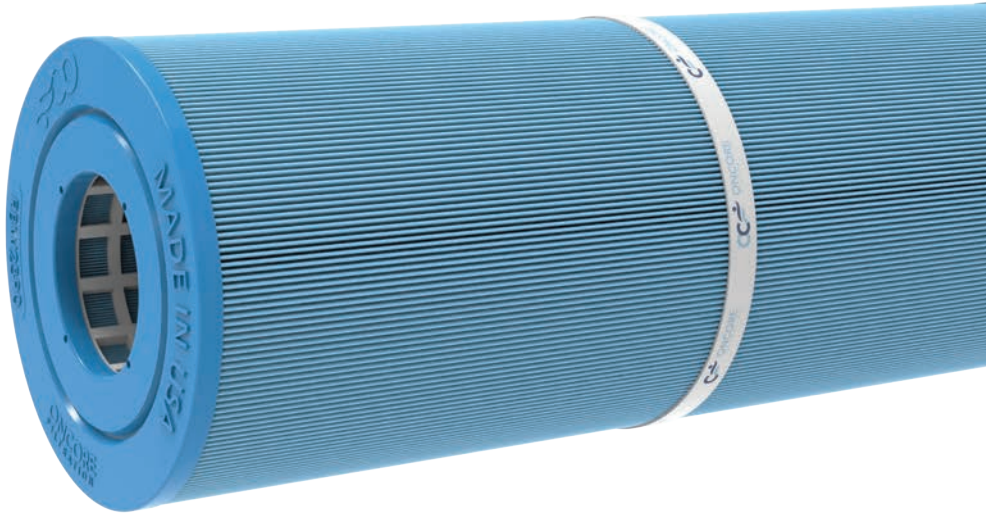
POOL | 10”

ONCORE PART #	DESCRIPTION	OD INCHES	LENGTH INCHES	TOP HOLE INCHES	BOTTOM HOLE INCHES	OEM PART #	PLEATCO	UNICEL	FILBUR
WPOC.HAYJ19D	Hayward C100S	10 1/16	19 1/2	4	4	CX100XRE	PA100S	C-9440	
WPOC.HAYJ19DM	Hayward C100S (Antimicrobial)	10 1/16	19 1/2	4	4	CX100XRE	PA100S-M	C-9440AM	
WPOC.HAYJ23C	Hayward C150S	10 1/16	23 1/8	4	4	CX150XRE	PA150S	C-9441	
WPOC.HAYJ23CM	Hayward C150S (Antimicrobial)	10 1/16	23 1/8	4	4	CX150XRE	PA150S-M	C-9441AM	
WPOC.HAYJ28A	Hayward C200S	10 1/16	28 3/16	4	4	CX200XRE	PA200S	C-9442	
WPOC.JCZJ14A	Jacuzzi Brothers Sherlock 80	10	14 5/8	Handle	6	42-3674-09-R	PJ80	C-9480	FC-1400
WPOC.JCZJ20A	Jacuzzi Brothers Sherlock 120	10	20 1/2	Handle	6	42-3675-08-R	PJ120	C-9481	FC-1401
WPOC.JCZJ24A	Jacuzzi Brothers Sherlock 160	10	24 5/16	Handle	6	42-3667-07-R	PJ160	C-9482	FC-1402
WPOC.JCZJ24AM	Jacuzzi Brothers Sherlock 160 (Antimicrobial)	10	24 5/16	Handle	6	42-3667-07-R	PJ160-M	C-9482AM	FC-1402M
WPOC.JCZJ30A	Jacuzzi Brothers Sherlock 200	10	30 3/16	Handle	6	42-3668-08-R	PJ200S	C-9483	FC-1403
WPOC.JCZJ10A-2P	Jacuzzi CFR/CFT 50	10 1/8	10 1/16	5 15/16	6	42-2940-09-R	PJ50	C-9650	FC-1460
WPOC.JCZJ14B	Jacuzzi CFR/CFT 75	10 1/8	14 5/16	5 15/16	6	42-3509-00-R	PJ75	C-9475	FC-1480
WPOC.JCZJ19A	Jacuzzi CFR/CFT 100	10 1/8	19 15/16	5 15/16	6	42-2941-08-R	PJ100	C-9699	FC-1490
WPOC.JCZJ24C	Jacuzzi CFR/CFT 150	10 1/8	24 1/16	5 15/16	6	42-3508-01-R	PJ150	C-9478	FC-1495
WPOC.JCZJ24D	Jacuzzi CFR/CFT-200	10 1/8	24 1/16	5 15/16	6	42-3540-01-R	PJ200	C-9420	FC-1498
WPOC.JCZJ24DM	Jacuzzi CFR/CFT-200 (Antimicrobial)	10 1/8	24 1/16	5 15/16	6	42-3540-01-R	PJ200-M	C-9420AM	FC-1498M
WPOC.PNAJ08A-3P	Predator 50 - Pentair Clean & Clear 50	10 1/8	8 9/16	6	6	R173213, 59054000, 1561-26	PAP50	C-9405	FC-0684
WPOC.PNAJ16A	Predator 75 - Pentair Clean & Clear 75, Cal Spas	10 1/8	16 1/8	6	6	R173214, 59054100	PAP75	C-9407	FC-0685
WPOC.PNAJ23A	Predator 100 - Pentair Clean & Clear 100	10 1/8	23 5/8	6	6	R173215, 59054200	PAP100	C-9410	FC-0686

POOL | 10”

BY OEM (MANUFACTURER)
+ CROSS REFERENCE

ONCORE PART #	DESCRIPTION	OD INCHES	LENGTH INCHES	TOP HOLE INCHES	BOTTOM HOLE INCHES	OEM PART #	PLEATCO	UNICEL	FILBUR
WPOC.PNAJ31A	Predator 150 - Pentair Clean & Clear 150	10 1/8	31 1/8	6	6	R173216, 59054300	PAP150	C-9415	FC-0687
WPOC.PNAJ31B	Predator 200 - Pentair Clean & Clear 200	10 1/8	31 1/8	6	6	R173217, 59054400	PAP200	C-9419	FC-0688
WPOC.PNAJ23B	added fabric upgrade to Predator 100 - Pentair Clean & Clear 100	10 1/8	23 5/8	6	6	R173215, 59054200	PAP118	C-9412	FC-0696
WPOC.PNAJ31C	Upgrade to Predator 150	10 1/8	31 1/8	6	6		PAP175	C-9417	FC-0698
WPOC.WWYJ23C	Waterway Eco-Kleer 150	10 1/8	23.125	6	6	817-1150	PWWEK150	C-9450	
WPOC.WWYJ23D	Waterway Eco-Kleer 200	10 1/8	23.125	6	6	817-1200	PWWEK200	C-9489	
WPOC.WWYJ13A	Waterway Pool 75, Leisure Bay WW-50	10 1/8	13 1/4	6	6	817-0075, 111831	PWW75	C-9401	FC-2960
WPOC.WWYJ19C	Waterway Pool 100, Leisure Bay WW-100	10 1/8	19 1/4	6	6	817-0100, 111832	PWW100	C-9402	FC-2965
WPOC.WWYJ25A	Waterway 200 Clearwater Cartridge	10 1/8	25 1/4	6	6	817-0200	PWW200	C-9404	FC-2968
WPOC.WWYJ25B	Waterway Pool 150, Leisure Bay WW-150	10 1/8	25 1/4	6	6	817-0150, 111833	PWW150	C-9403	FC-2969



CC FILTER CLEANING

Pool and Spa Filter Cleaning Guide

WHEN TO CLEAN:

- **For Pools:** Clean the cartridge(s) when the pressure gauge on the tank reads **8 psi above the initial system pressure**. Tip: Measure the psi with a clean pool filter first, and avoid letting the pressure exceed 8 psi over this initial reading.
- **For Spas:** Clean the cartridge(s) when you notice a **decrease in water jet performance** or when spa features like waterfalls are not functioning as well. This will depend on how frequently you use your spa.

HOW TO CLEAN:

1. **Follow the Manufacturer's Instructions:** Begin by referring to your specific manufacturer's instructions on how to safely remove your filters.
2. **Turn Off the Power:**
 - For Pools: Turn off the power to your pump and bleed the pressure from the tank before removing its top section.
 - For Spas: Turn off the power to the spa and release any pressure in the system.
3. **Remove and Rinse the Filters:** Take out the filter(s) and hose them off thoroughly to remove dirt and debris. Avoid using high-pressure washers, which can damage the filters.
4. **Deep Cleaning (Optional):**
 - Soak your filters for at least one hour or preferably overnight for a thorough clean.
 - Use a filter cleaner like Jack's Magic Filter Cleaner for a faster turnaround.
 - Tip: It's a good idea to have a spare set of filters to use while you deep-clean the first set.
5. **Handling High Bather Loads** (Oils, Lotions, etc.): For filters clogged with oils or lotions, soak them overnight in one of the following solutions:
 - Detergent: Mix 1 cup of detergent with 5 gallons of water.
 - Trisodium Phosphate: Mix 1 cup with 5 gallons of water. (Always wear waterproof gloves and goggles when handling chemicals.)
 - Enzymes: Follow the manufacturer's instructions.
 - Filter Cleaner (like Jack's Magic Filter Cleaner): Follow the manufacturer's instructions.
6. **Algae-Contaminated Filters:** Soak the filters in a solution of water and pool algaecide for 15-30 minutes. Follow the dosage instructions provided by the algaecide manufacturer. (Always wear gloves and goggles when handling chemicals.)
7. **Rinse Thoroughly:** Make sure to rinse the filters well before putting them back into your pool or spa equipment.
8. **Reassemble Equipment:** Follow the manufacturer's instructions to properly reassemble your pool or spa system.

SAFETY REMINDER:

Always use gloves and eyewear when working with cleaning solutions. Safety first!



ONCORE • ONPOINT



SPA REPLACEMENT FILTERS



BY OEM
(MANUFACTURER)

SPA | 4”

BY OEM (MANUFACTURER)
+ CROSS REFERENCE

ONCORE PART #	DESCRIPTION	OD INCHES	LENGTH INCHES	TOP HOLE INCHES	BOTTOM HOLE INCHES	OEM PART #	PLEATCO	UNICEL	FILBUR
WSOC.HRC406C-6P	4 5/8 X 6 3/4, TSC, Top Load	4 5/8	6 3/4	Handle	1 1/2" MPT	20241-238, PVT-25	PHC25P4	4CH-20	FC-0125
WSOC.PLT408N-6P	Pageant Spa Top Load	4 5/8	8	Handle	1 1/2" MPT	20245-238, PVT-25N	PTL18P4	4CH-21	FC-0121
WSOC.PLT411J-6P	Advanced/LA Spas, Top Load	4 5/8	11 7/8	Handle	1 1/2" MPT	74407-98, 1561-14, 6540-484	PTL25P4	4CH-30	FC-0141
WSOC.PLT414B-6P	Advanced/LA Spas/ Nemco Spas	4 5/8	14 3/4	Handle	1 1/2" MPT	1561-05	PTL50P4	4CH-50	FC-0151
WSOC.PLT415A-6P	Hot Spring Spas (Watkins), Top Load	4 5/8	15	Handle	1 1/2" MPT	31382, 6540-486	PTL35P4	4CH-35	FC-0161
WSOC.SRG405A-6P	Saratoga Spas	4 5/8	5 15/16	Handle	1 1/2" MPT	303575	PSG13.5P4	4CH-19	FC-0122
WSOC.SRG415B-6P	Saratoga Spas Top Load	4 5/8	15 1/4	Handle	1 1/2" MPT		PS-G40N-P4-M		FC-0133M
WSOC.SRG411L-6P	Saratoga Spas Circulation Pump	4 5/8	11 3/8	Handle	1 1/2" MPT		PSG27.5P4-M		FC-0132M
WSOC.STG408P-6P	Futura Spa (Strong Industries)	4 5/8	8	Handle	1 1/2" SAE		PSANT20P3	4CH-925	FC-0126
WSOC.MAS408Q-6P	FILTER, 20SF 2" MPT	4 5/8	8 1/16	Handle	2" MPT	X268521	PMA20-F2M	4CH-252	

SPA | 5”

ONCORE PART #	DESCRIPTION	OD INCHES	LENGTH INCHES	TOP HOLE INCHES	BOTTOM HOLE INCHES	OEM PART #	PLEATCO	UNICEL	FILBUR
WSOC.CAL523A-6P	Waterway In-Line 75	5	23 5/8	2 1/8	2 1/8	817-7500	PCAL75	C-4970	FC-2930
WSOC.CAL523B-6P	Waterway 100, Cal Spas	5	23 5/8	2 1/8	2 1/8	817-1000	PCAL100	C-4995	FC-2940
WSOC.FFL506D-6P	Freeflow Lagas, CLX	5	6 5/8	2 1/8	1 1/2" MPT	FF-150	PFF25P4		FC-2399
WSOC.FFL506C-6P	Freeflow Lagas, TLX, RLX	5	6 5/8	Closed	1 1/2" MPT	FF-100, Claro	PFF25TC-P4	4CH-23	FC-2400
WSOC.JCZ513B-6P	Jacuzzi CFR/CFT 25	5	13 5/16	2 3/8	2 3/8	42-2891-08-R, 2590000, 5475000	PJ25-IN	C-5625	FC-1425
WSOC.JCZ513C-6P	Jacuzzi CFR/CFT 37	5	13 5/16	2 3/8	2 3/8	42-3533-00-R	PJ37-IN	C-5635	FC-1437
WSOC.JCZ513D-6P	Jacuzzi CFR/CFT 15	5	13 5/16	2 3/8	2 3/8		PJ15-IN-4	C-5615	FC-1415
WSOC.MTC514C-6P	Sonfarrel 50-220152, Cal Spas, Martec, Advantage Mfg.	5	14 7/8	2 1/8	2 1/8	CL-2807, CL2810	PMT50	C-4305	FC-1630
WSOC.MTC514D-6P	Sonfarrel 45	5	14 7/8	2 1/8	2 1/8		PMT45	C-4347	FC-2630
WSOC.RBW513E-6P	Dynamic Series II & III - RTL/RCF, Series I - Model RDC, Series IV - DFM, DFML, Waterway	5	13 5/16	2 1/8	2 1/8	17-2325	PRB25-IN-4	C-4625	FC-2370

SPA | 5”

BY OEM (MANUFACTURER)
+ CROSS REFERENCE

ONCORE PART #	DESCRIPTION	OD INCHES	LENGTH INCHES	TOP HOLE INCHES	BOTTOM HOLE INCHES	OEM PART #	PLEATCO	UNICEL	FILBUR
WSOC.RBW513G-6P	Dynamic Series I RDC-25, I RDC-25S, Dynamic Series II & II RTL/RCF-25, Dynamic Series IV-DFM, DFML, Waterway 25 In-Line, Custom Molded Products	5	13 5/16	2 1/8	2 1/8	17-2327, 100586, 33521, 25392, 303909, M-4326, 817-2500, R173429	PRB25-IN	C-4326	FC-2375
WSOC.RBW-513GM-6P	Dynamic Series I RDC-25, I RDC-25S, Dynamic Series II & II RTL/RCF-25, Dynamic Series IV-DFM, DFML, Waterway 25 In-Line, Custom Molded Products (Anti-microbial)	5	13 5/16	2 1/8	2 1/8	17-2327, 100586, 33521, 25392, 303909, M-4326, 817-2500, R173429	PRB25-IN-M	C-4326AM	FC-2375-M
WSOC.RBW513J-6P	Dynamic Series I RDC-25, I RDC-25S, Series IV - DFM, DFML, Series II & KKK RTL/RCF-25, Waterway, Morgan Spas, Leisure Bay Spas, Custom Molded Products	5	13 5/16	2 1/8	2 1/8	R173430	PRB37-IN	C-4637	FC-2380
WSOC.RBW509D-6P	Dynamic Series IV - DFM, DFML, Waterway 35, In-Line	5	9 1/4	2 1/8	2 1/8	03FIL1300, 17-2482, 25393, 303557, 817-3501, R173431	PRB35-IN	C-4335	FC-2385
WSOC.RB-W509DM-6P	Dynamic Series IV - DFM, DFML, Waterway 35, In-Line (Antimi-crobial)	5	9 1/4	2 1/8	2 1/8	03FIL1300, 17-2482, 25393, 303557, 817-3501, R173431	PRB35-IN-M	C-4335AM	FC-2385M
WSOC.RBW504A-12P	Dynamic Series IV - Model DSF 35, Waterway	5	4 5/8	2 1/8	2 3/16	817-3510, 17-2606, 6000-134, R173432	PRB17.5SF-JH-PAIR	C-4401	FC-2386
WSOC.RBW506B-12P	Dynamic Series IV, Model DSF, DFML-25C, Waterway	5	6 5/8	2 1/8	2 1/8	817-5010, 17-2464, R173433	PRB25SF-JH-PAIR	C-4405	FC-2387
WSOC.RBW513K-6P	Dynamic Series IV - DFM, DFML, Series II & III RTL/RCF-50, Series I RDC-50, RDC-50S, Waterway, Custom Molded Products	5	13 5/16	2 1/8	2 1/8	03FIL1600, 17-2380, RTL-50, 100533, 6540-471, 25391, 817-5000, R173434	PRB50-IN	C-4950	FC-2390
WSOC.RBW513KM-6P	Dynamic Series IV - DFM, DFML, Series II & III RTL/RCF-50, Series I RDC-50, RDC-50S, Waterway, Custom Molded Products (Anti-microbial)	5	13 5/16	2 1/8	2 1/8	03FIL1600, 17-2380, RTL-50, 100533, 6540-471, 25391, 817-5000, R173434	PRB50-IN-M	C-4950AM	FC-2390M
WSOC.RBW520A-6P	Dynamic Series V-DSC-75, Series II & III RTL/RCF-75, Custom Mold-ed Products	5	20 1/8	2 1/8	2 1/8	17-2632, RTL-75, 25390, R173435	PRB75	C-4975	FC-2395

SPA | 5”

BY OEM (MANUFACTURER)
+ CROSS REFERENCE

ONCORE PART #	DESCRIPTION	OD INCHES	LENGTH INCHES	TOP HOLE INCHES	BOTTOM HOLE INCHES	OEM PART #	PLEATCO	UNICEL	FILBUR
WSOC.RB-W520AM-6P	Dynamic Series V-DSC-75, Series II & III RTL/RCF-75, Custom Molded Products (Antimicrobial)	5	20 1/8	2 1/8	2 1/8	17-2632, RTL-75, 25390, R173435 (Antimicrobial)	PRB75-M	C-4975AM	FC-2395M
WSOC.RBW526A-4P	Dynamic Series II & III RTL/RCF-100, Series V-DSC-100	5	26 1/2	2 1/8	2 1/8	17-2633, R173436	PRB100	C-4999	FC-2397
WSOC.SAN510J-6P	Santana 25, Open Top	5	10 1/16	2 1/8	2 1/8		PPI25D	C-4428	FC-2620
WSOC.SAN517D-6P	Santana 45	5	17 5/8	2 1/8	2 1/8		PSI45-O	C-4449	FC-2640
WSOC.WWY509N-6P	Waterway Teleweir 35	5	9 1/4	Handle	1 1/2" FEMALE SAE	817-4035	PWW35L	4CH-935	FC-0170
WSOC.WWY509NM-6P	Waterway Teleweir 35 (Antimicrobial)	5	9 1/4	Handle	1 1/2" FEMALE SAE	817-4035	PWW35L-M	4CH-935AM	FC-0170M
WSOC.WWY513P-6P	Waterway Teleweir 50	5	13 3/16	Handle	1 1/2" FEMALE SAE	817-4050	PWW50L	4CH-949	FC-0172
WSOC.WWY513PM-6P	Waterway Teleweir 50 (Antimicrobial)	5	13 3/16	Handle	1 1/2" FEMALE SAE	817-4050	PWW50L-M	4CH-949AM	FC-0172M
WSOC.WWY511H-6P	Waterway 40, In-Line	5	11 5/16	2 1/8	2 1/8	817-0040, 100585, 3301-2241	PWW40	C-4339	FC-2915
WSOC.MAS508E-6P	FILTER WHT 25SQ NO INNER	5	8 1/2	Handle	1 1/2" FEMALE SAE	X268557	PMA26L		

SPA | 6”

ONCORE PART #	DESCRIPTION	OD INCHES	LENGTH INCHES	TOP HOLE INCHES	BOTTOM HOLE INCHES	OEM PART #	PLEATCO	UNICEL	FILBUR
WSOC.ARS607A-4P	Artesian Spas 50	6 3/4	7 7/8	Handle	2" MPT		PAS50SV-F2M	6CH-502	FC-0311
WSOC.ARS607B-6P	New Artesian 6" D Spa	6	7 5/8	Handle	2" MPT		PAS40-F2M	6CH-352	FC-0312
WSOC.ARS607BM-6P	New Artesian 6" D Spa (Antimicrobial)	6	7 5/8	Handle	2" MPT		PAS40-F2M-M	6CH-352AM	FC-0312M
WSOC.JCW615A-2P	Jacuzzi Premium J-300, J400 (injection molded handle not included)	6 5/8	15 1/2	Open Top	2" SAE	6541-383	PJW60TL-OT-F25	6CH-961	FC-2715
WSOC.JCW615B-2P	Jacuzzi Premium J-300, J400	6 5/8	15 1/2	Handle	2" SAE	6540-476	PJW60TL-F25	6CH-960	FC-2800
WSOC.MAS609D-6P	Master Spas Twilight	6	9 1/4	Handle	2" MPT	X268365	PMA40L-F2M		FC-0317
WSOC.MAS609DM-6P	Master Spas Twilight (Antimicrobial)	6	9 1/4	Handle	2" MPT	X268365	PMA40L-F2M-M		FC-0317M
WSOC.MAS608A-4P	Master Spas outer cartridge for PMA-PROPAK2-M (Antimicrobial)	6 1/2	8	4 1/16	4 1/16		PMA25		FC-1008

SPA | 6”

BY OEM (MANUFACTURER)
+ CROSS REFERENCE

ONCORE PART #	DESCRIPTION	OD INCHES	LENGTH INCHES	TOP HOLE INCHES	BOTTOM HOLE INCHES	OEM PART #	PLEATCO	UNICEL	FILBUR
WSOC.MAS608AM-4P	Master Spas outer cartridge for PMA-PROPAK2-M (Antimicrobial)	6 1/2	8	4 1/16	4 1/16		PMA25-M		FC-1008M
WSOC.PLT605A-6P	Softub; Leisure Bay; 6 x 5 1/2, TSC	6	5 1/2	Handle	1 1/2" MPT	90-802	PTL20W-SV-P4	6CH-25	FC-0305
WSOC.PLT606A-6P	American Spas; Artesian (Coleman)	6	6 1/2	Handle	1 1/2" MPT		PTL25W-SV-P4		FC-0310
WSOC.PLT608E-6P	Advanced/LA Spas; Aber Hottub	6	8 3/4	Handle	1 1/2" MPT	03FIL1500	PTL47W-P4	6CH-47	FC-0315
WSOC.PLT609A-4P	DFA Spas; Arizona Pacific	6	9 13/16	Handle	1 1/2" MPT		PTL35W-P4	6CH-35	FC-0320
WSOC.PLT611A-4P	Master Spas; Freedom Spas	6	11 15/16	Handle	1 1/2" MPT		PTL45W-P4	6CH-45	FC-0330
WSOC.PLT613A-4P	Advanced/LA Spas	6	13 3/16	Handle	1 1/2" MPT		PTL50W-SV-P4	6CH-50	FC-0340
WSOC.PLT614A-2P	Caribbean/Catalina; Jetta Spas; Wild Water Spa	6	14 13/16	Handle	1 1/2" MPT		PTL60W-P4	6CH-60	FC-0350
WSOC.PLT613B-3P	Seven Seas Spas	6	13 3/8	Handle	1 1/2" MPT		PTL40W-P4		FC-0351
WSOC.PLT609B-6P	Four Seasons Spa	6	9 3/4	Handle	1 1/2" MPT		PTL25W-P4		FC-3083
WSOC.PLT614B-3P	Advanced Spa 75	6	14 13/16	Handle	1 1/2" MPT		PTL50W-P4	C-6475	FC-3089
WSOC.SUN607C-6P	Top Load, Sunrise Modification	6	7 7/8	Handle	1 1/2" MPT		PPG50P4	6CH-49	FC-0314
WSOC.WTK614C-4P	Watkins Hot Spring Spas	6 3/8	14	1 15/16	1 15/16	1642301-1	PWK35B		FC-3921
WSOC.WTK614D-4P	Watkins Hot Spring Spas	6 3/8	14	1 15/16	1 15/16		PWK70B		
WSOC.WWY607D-6P	Waterway Front Access Skimmer (2 required)	6	7 5/8	Handle	1 1/2" SAE	817-0050, 03FIL1400, 25252, 378902, PWW50	PWW50P3	6CH-940	FC-0359
WSOC.WWY607DM-6P	Waterway Front Access Skimmer, Aber Hot Tubs, (Antimicrobial)	6	7 5/8	Handle	1 1/2" SAE	817-0050, 03FIL1400, 25252, 378902, PWW50 (Antimicrobial)	PW-W50P3-M	6CH-940AM	FC-0359M



SPA | 7"

BY OEM (MANUFACTURER)
+ CROSS REFERENCE

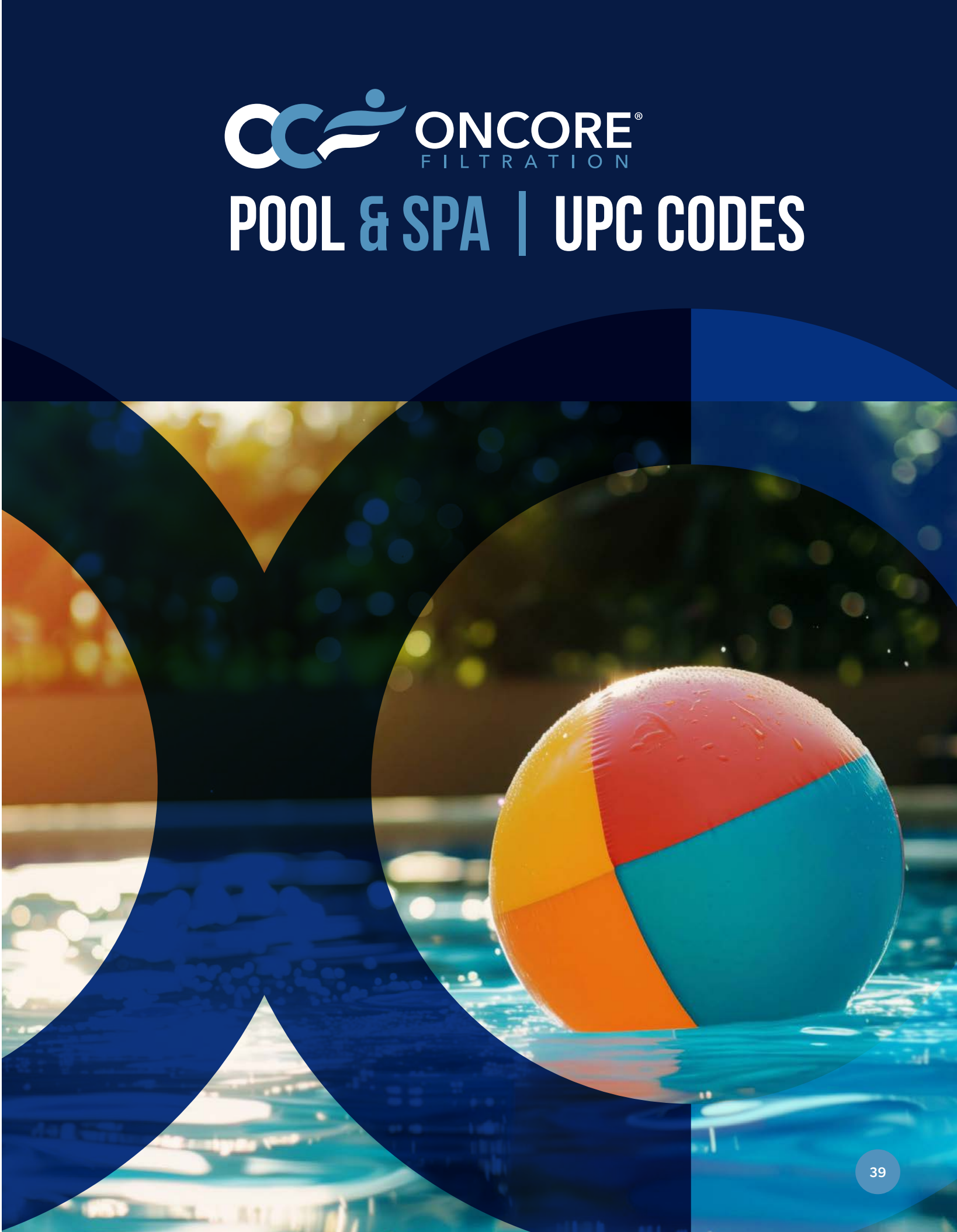
ONCORE PART #	DESCRIPTION	OD INCHES	LENGTH INCHES	TOP HOLE INCHES	BOTTOM HOLE INCHES	OEM PART #	PLEATCO	UNICEL	FILBUR
WSOC.ARS707A-3P	Artesian Top Load Spa (Coleman)	7 1/8	7 9/16	Handle	2" MPT	100520, 3301-2109	PAS35-F2M	7CH-322	FC-0420
WSOC.ARS707AM-3P	Artesian Top Load Spa (Coleman) (Antimicrobial)	7 1/8	7 9/16	Handle	2" MPT	100520, 3301-2109	PAS35- F2M-M	7CH- 322AM	FC-0420M
WSOC.CLD710A-2P	Caldera 50	7	10 3/4	Swivel Handle	2" Male Slip	033016	PCD50	C-7451	FC-3084
WSOC.CLD714C-2P	Caldera 75	7	14 5/8	Swivel Handle	2" Male Slip	033017	PCD75	C-7479	FC-3085
WSOC.CLD710B-2P	Caldera 50 (new style)	7	10 3/4	Swivel Handle	2 11/16	1019401	PCD50N	C-7350	FC-3963
WSOC.CLD710BM-2P	Caldera 50 (new style)(Antimi- crobial)	7	10 3/4	Swivel Handle	2 11/16	1019401	PCD50N-M	C-7350AM	FC-3963M
WSOC.CLD714D-2P	Caldera 75 (new style)	7	14 7/8	Swivel Handle	2 11/16	1019301	PCD75N	C-7375	FC-3964
WSOC.DON710D-4P	Dimension One 75, @Home Hot Tubs (open w/twist lock)	7 1/4	10 1/4	Castle Top	Special Lock Bottom	1561-00	PDO75- 2000	C-7367	FC-3059
ONCORE PART #	DESCRIPTION	OD INCHES	LENGTH INCHES	TOP HOLE INCHES	BOTTOM HOLE INCHES	OEM PART #	PLEATCO	UNICEL	FILBUR
WSOC.MAS707B-4P	Master Spas Legacy / Freedom	7 1/8	7 3/16	Handle	2" MPT	X268080	PMA40-F2M		FC-0418
WSOC.OXY721B-2P	Advantage Electric 100	7 1/4	21 1/2	3	3	ELE-100	POX100	C-7302	FC-6320
WSOC.SUN707D-4P	Sunrise	7	7 7/8	Handle	1 1/2" MPT		PSN50P4		FC-0530
WSOC.VTA709H-4P	40SF Vita Spa, Coleman, Top Load	7	9 7/8	Handle	1 1/2" MPT	100433, 3301-1019	PVT40P4	7CH-40	FC-0435
WSOC.VTA714X-2P	Coleman, Vita Spa 7x14 3/4, TSC	7	14 13/16	Handle	1 1/2" MPT	100434, 3301-1020	PVT50P4	7CH-50	FC-0463
WSOC.WAC709J-4P	Waterco C-25	7 1/4	9 7/8	3	3	62040	PWC25	C-7427	FC-5125
WSOC.SUD705A-12P	Sundance Microclean Depth Filter	7 3/4	5	4 3/4	4 3/4	6540-502	PPS750		FC-2812

SPA | 8"

ONCORE PART #	DESCRIPTION	OD INCHES	LENGTH INCHES	TOP HOLE INCHES	BOTTOM HOLE INCHES	OEM PART #	PLEATCO	UNICEL	FILBUR
WSOC.SUD819D	Sundance Double End 120	8 1/2	19	2 3/16 Slip	2 3/4" beveled edge	6540-488	PSD125- 2000	C-8326	FC-2780
WSOC.SUD814A	Sundance Microclean	8 1/2	14 5/8	2" SAE (Closed)	2 3/4" beveled edge	6540-501	PSD85-2002	C-8380	FC-2810
WSOC.VTA807A-4P	Vita Spa AB5-300 (Antimicrobial)	8 1/2	7 1/4	Handle	2" MPT		PVT- 30WH-F2M		FC-3052
WSOC.VTA807AM-4P	Vita Spa AB5-300 (Antimicrobial)	8 1/2	7 1/4	Handle	2" MPT		PVT- 30WH-F2M-M		FC-3052
WSOC.WTK810C-2P	Watkins Hot Spring Spas upgrade from PWK45N	8 1/2	10 1/2	3	3	31114	PWK65	C-8465	FC-3960



POOL & SPA | UPC CODES



ONCORE PART #	CASE QTY	UPC EACH	UPC CASE
WPOC.HAY411D-6P	6	00849373016689	10849373016686
WPOC.HAY411E-6P	6	00849373016696	10849373016693
WPOC.HAY411F-6P	6	00849373016702	10849373016709
WPOC.HAY709E-4P	4	849373016719	10849373016716
WPOC.HAY714G-4P	4	849373016726	10849373016723
WPOC.HAY714H-4P	4	849373016733	10849373016730
WPOC.HAY714HM-4P	4	TBD	TBD
WPOC.HAY714K-4P	4	849373016740	10849373016747
WPOC.HAY719D-4P	4	849373016757	10849373016754
WPOC.HAY719E-4P	4	849373016764	10849373016761
WPOC.HAY719F-2P	2	849373016771	10849373016778
WPOC.HAY719G-4P	4	849373016252	10849373016259
WPOC.HAY719U-4P	4	00849373017723	10849373017720
WPOC.HAY725A-4P	4	849373016788	10849373016785
WPOC.HAY725B-4P	4	849373016269	10849373016266
WPOC.HAY725BM-4P	4	849373017679	10849373017676
WPOC.HAY725C-4P	4	849373016795	10849373016792
WPOC.HAY725CM-4P	4	849373017334	10849373017331
WPOC.HAY729D	1	849373016801	N/A
WPOC.HAY729DM	1	849373017648	#N/A
WPOC.HAY732A-4P	4	849373016818	10849373016815
WPOC.HAY732B-4P	4	849373016276	10849373016273
WPOC.HAY732C-4P	4	849373016825	10849373016822
WPOC.HAY732CM-4P	4	TBD	TBD
WPOC.HAY817A	1	TBD	TBD
WPOC.HAY817B	1	849373016832	N/A
WPOC.HAY817C	1	849373016849	N/A
WPOC.HAY817CM	1	849373017297	#N/A
WPOC.HAY817D	1	849373016856	N/A
WPOC.HAY817DM	1	849373017501	#N/A
WPOC.HAY817G	1	#N/A	#N/A
WPOC.HAY823A	1	849373016863	N/A
WPOC.HAY823AM	1	849373017631	#N/A
WPOC.HAY823B	1	849373016870	N/A
WPOC.HAY823BM	1	849373017594	#N/A
WPOC.HAY823C	1	849373016139	N/A
WPOC.HAY823CM	1	849373016887	N/A
WPOC.HAY823L	1	#N/A	#N/A
WPOC.HAY828A	1	849373016894	N/A
WPOC.HAY828B	1	849373016900	N/A
WPOC.HAY828BM	1	849373017587	#N/A

ONCORE PART #	CASE QTY	UPC EACH	UPC CASE
WPOC.HAY829A	1	#N/A	#N/A
WPOC.HAY914A	1	849373016917	N/A
WPOC.HAY914AM	1	TBD	TBD
WPOC.HAY919A	1	849373016924	N/A
WPOC.HAYJ19D	1	00849373017266	n/a
WPOC.HAYJ19DM	1	00849373017488	n/a
WPOC.HAYJ23C	1	00849373017273	n/a
WPOC.HAYJ23CM	1	00849373017327	n/a
WPOC.HAYJ28A	1	00849373017280	n/a
WPOC.JAN714L-2P	2	TBD	TBD
WPOC.JAN719H-2P	2	TBD	TBD
WPOC.JAN726B-4P	4	849373016238	10849373016235
WPOC.JAN726C-4P	4	849373016153	10849373016150
WPOC.JAN726CM-4P	4	849373016931	10849373016938
WPOC.JAN729E-2P	2	TBD	TBD
WPOC.JAN732E-4P	4	849373016245	10849373016242
WPOC.JAN823E	1	849373016948	N/A
WPOC.JAN823EM	1	849373017358	#N/A
WPOC.JAN823G	1	849373016955	N/A
WPOC.JAN833A	1	849373016962	N/A
WPOC.JAN833AM	1	849373016979	N/A
WPOC.JAN833C	1	849373016986	N/A
WPOC.JCZJ10A-2P	2	TBD	TBD
WPOC.JCZJ14A	1	849373016993	N/A
WPOC.JCZJ14B	1	00849373017525	n/a
WPOC.JCZJ19A	1	849373017006	N/A
WPOC.JCZJ20A	1	849373017013	N/A
WPOC.JCZJ24A	1	849373017020	N/A
WPOC.JCZJ24AM	1	TBD	TBD
WPOC.JCZJ24C	1	00849373017853	n/a
WPOC.JCZJ24D	1	00849373017860	n/a
WPOC.JCZJ24DM	1	TBD	TBD
WPOC.JCZJ30A	1	849373017037	N/A
WPOC.PLC725F	1	#N/A	#N/A
WPOC.PLC732G	1	#N/A	#N/A
WPOC.PNAJ08A-3P	3	849373017044	10849373017041
WPOC.PNAJ16A	1	849373017181	N/A
WPOC.PNAJ23A	1	849373016207	N/A
WPOC.PNAJ23B	1	849373017051	N/A
WPOC.PNAJ31A	1	849373016214	N/A
WPOC.PNAJ31B	1	849373016221	N/A

ONCORE PART #	CASE QTY	UPC EACH	UPC CASE
WPOC.PNAJ31C	1	849373017068	N/A
WPOC.PNC714T-4P	4	849373017075	10849373017072
WPOC.PNC720B-4P	4	849373016160	10849373016167
WPOC.PNC726E-4P	4	849373017082	10849373017089
WPOC.PNC726F-4P	4	849373016146	10849373016143
WPOC.PNC726FM-4P	4	849373017099	10849373017096
WPOC.PNC732F-4P	4	849373016184	10849373016181
WPOC.PNC732FM-4P	4	849373017594	10849373017591
WPOC.PNF711C-4P	4	849373017105	10849373017102
WPOC.PNF714U-2P	2	849373017112	10849373017119
WPOC.PNF718B-2P	2	TBD	TBD
WPOC.PNF722C-2P	2	849373017129	10849373017126
WPOC.PNF722D-2P	2	849373017136	10849373017133
WPOC.PNF724A-2P	2	TBD	TBD
WPOC.PNF730A	1	TBD	TBD
WPOC.PNF733A	1	TBD	TBD
WPOC.PNX711D-4P	4	TBD	TBD
WPOC.PNX716B-2P	2	TBD	TBD
WPOC.PNX719P-2P	2	TBD	TBD
WPOC.PNX725E-2P	2	TBD	TBD
WPOC.STR719Q-2P	2	TBD	TBD
WPOC.STR729J-2P	2	TBD	TBD
WPOC.WAC719T-2P	2	TBD	TBD
WPOC.WWY817F	1	849373017143	N/A
WPOC.WWY823H	1	849373017150	N/A
WPOC.WWY823HM	1	849373017167	N/A
WPOC.WWY823K	1	849373016177	N/A
WPOC.WWY828C	1	849373017174	N/A
WPOC.WWY828D	1	00849373017846	n/a
WPOC.WWY828DM	1	#N/A	#N/A
WPOC.WWYJ13A	1	00849373017563	n/a
WPOC.WWYJ19C	1	00849373017570	n/a
WPOC.WWYJ23C	1	#N/A	#N/A
WPOC.WWYJ23D	1	#N/A	#N/A
WPOC.WWYJ25A	1	TBD	TBD
WPOC.WWYJ25B	1	00849373017518	n/a
WSOC.OXY517A-5P	5	#N/A	#N/A
WSOC.OXY714A-2P	2	#N/A	#N/A
WSOC.OXY728A-2P	2	#N/A	#N/A

ONCORE PART #	CASE QTY	UPC EACH	UPC CASE
WSOC.ARS607A-4P	4	849373016313	10849373016310
WSOC.ARS607B-6P	6	849373015989	10849373015986
WSOC.ARS607BM-6P	6	849373017426	10849373017423
WSOC.ARS707A-3P	3	00849373017396	10849373017393
WSOC.ARS707AM-3P	3	00849373017389	10849373017386
WSOC.BUF805A-4P	4	849373016320	10849373016327
WSOC.BUF805B-4P	4	00489373017245	10849373017249
WSOC.CAL516A-6P	6	849373016337	10849373016334
WSOC.CAL516AM-6P	6	849373017457	10849373017454
WSOC.CAL523A-6P	6	849373016344	10849373016341
WSOC.CAL523B-6P	6	849373015996	10849373015993
WSOC.CLD710A-2P	2	849373016351	10849373016358
WSOC.CLD714C-2P	2	849373016375	10849373016372
WSOC.CLD710B-2P	2	849373016368	10849373016365
WSOC.CLD710BM-2P	2	849373017372	10849373017379
WSOC.CLD714D-2P	2	00849373017556	10849373017553
WSOC.CLD816A-2P	2	TBD	TBD
WSOC.CLS809A-2P	2	849373016382	10849373016389
WSOC.CLS813A-2P	2	849373016009	10849373016006
WSOC.CST521A-4P	4	TBD	TBD
WSOC.CST530A-4P	4	TBD	TBD
WSOC.DON710D-4P	4	TBD	TBD
WSOC.DRM408D-6P	6	849373016399	10849373016396
WSOC.DRM408DM-6P	6	849373017365	10849373017362
WSOC.FFL506D-6P	6	849373016405	10849373016402
WSOC.FFL506C-6P	6	849373016412	10849373016419
WSOC.FFL510A-6P	6	849373016429	10849373016426
WSOC.FFL509A-6P	6	00879373016436	10849373016433
WSOC.FFL509AM-6P	6	TBD	TBD
WSOC.GTS409A-6P	6	849373015972	10849373015979
WSOC.HRC406C-6P	6	849373016443	10849373016440
WSOC.JCW510C-6P	6	849373016467	10849373016464
WSOC.JCW510D-6P	6	849373016474	10849373016471
WSOC.JCW615A-2P	2	849373016498	10849373016495
WSOC.JCW615B-2P	2	849373016016	10849373016013
WSOC.JCW510L-6P	6	849373016450	10849373016457
WSOC.JCZ513B-6P	6	849373016481	10849373016488
WSOC.JCZ513C-6P	6	TBD	TBD
WSOC.JCZ513D-6P	6	TBD	TBD
WSOC.LAS508A-6P	6	849373016023	10849373016020
WSOC.LAS508AM-6P	6	#N/A	#N/A

ONCORE PART #	CASE QTY	UPC EACH	UPC CASE
WSOC.LBS510E-6P	6	00849373017709	10849373017706
WSOC.LBS510EM-6P	6	TBD	TBD
WSOC.LBS514A-4P	4	00849373017211	10849373017218
WSOC.LBS514AM-4P	4	00849373017464	10849373017461
WSOC.LBS517C-4P	4	TBD	TBD
WSOC.MAS609D-6P	6	00849373017549	10849373017546
WSOC.MAS609DM-6P	6	TBD	TBD
WSOC.MAS707B-4P	4	TBD	TBD
WSOC.MAS809B-2P	2	TBD	TBD
WSOC.MAS806A-4P	4	849373016030	10849373016037
WSOC.MAS806AM-4P	4	TBD	TBD
WSOC.MAS608A-4P	4	849373017532	10849373017539
WSOC.MAS608AM-4P	4	TBD	TBD
WSOC.MAX508C-6P	6	00849373017716	10849373017713
WSOC.MAX508D-6P	6	#N/A	#N/A
WSOC.MAX508B-6P	6	849373016047	10849373016044
WSOC.MAX508BM-6P	6	TBD	TBD
WSOC.MTC514C-6P	6	849373016504	10849373016501
WSOC.MTC514D-6P	6	849373016511	10849373016518
WSOC.OXY721B-2P	2	00849373016528	10849373016525
WSOC.PLT408N-6P	6	TBD	TBD
WSOC.PLT411J-6P	6	TBD	TBD
WSOC.PLT414B-6P	6	00849373017204	10849373017201
WSOC.PLT415A-6P	6	TBD	TBD
WSOC.PLT605A-6P	6	849373016535	10849373016532
WSOC.PLT606A-6P	6	849373016542	10849373016549
WSOC.PLT608E-6P	6	849373016559	10849373016556
WSOC.PLT609A-4P	4	849373016566	10849373016563
WSOC.PLT611A-4P	4	849373016573	10849373016570
WSOC.PLT613A-4P	4	849373016580	10849373016587
WSOC.PLT614A-2P	2	TBD	TBD
WSOC.PLT613B-3P	3	TBD	TBD
WSOC.PLT609B-6P	6	TBD	TBD
WSOC.PLT614B-3P	3	TBD	TBD
WSOC.PMQ512C-6P	6	849373016191	10849373016198
WSOC.PMQ512CM-6P	6	TBD	TBD
WSOC.PMQ512E-6P	6	849373016597	10849373016594
WSOC.PMQ512EM-6P	6	849373017471	10849373017478
WSOC.SUN607C-6P	6	849373016054	10849373016051
WSOC.RBW513E-6P	6	TBD	TBD
WSOC.RBW513G-6P	6	849373016061	10849373016068
WSOC.RBW513GM-6P	6	849373017600	10849373017607

ONCORE PART #	CASE QTY	UPC EACH	UPC CASE
WSOC.RBW513J-6P	6	TBD	TBD
WSOC.RBW509D-6P	6	849373016078	10849373016075
WSOC.RBW509DM-6P	6	849373017419	10849373017416
WSOC.RBW504A-12P	12	849373016603	10849373016600
WSOC.RBW506B-12P	12	849373016610	10849373016617
WSOC.RBW513K-6P	6	849373016085	10849373016082
WSOC.RBW513KM-6P	6	849373016627	10849373016624
WSOC.RBW520A-6P	6	849373016092	10849373016099
WSOC.RBW520AM-6P	6	849373017617	10849373017614
WSOC.RBW526A-4P	4	#N/A	#N/A
WSOC.SAN510J-6P	6	TBD	TBD
WSOC.SAN517D-6P	6	849373016641	10849373016648
WSOC.SRG405A-6P	6	TBD	TBD
WSOC.SRG415B-6P	6	#N/A	#N/A
WSOC.SRG411L-6P	6	#N/A	#N/A
WSOC.STG408P-6P	6	TBD	TBD
WSOC.SUD819D	1	849373016108	N/A
WSOC.SUD815B-2P	2	TBD	TBD
WSOC.SUD814A	1	00849373017433	n/a
WSOC.SUN707D-4P	4	TBD	TBD
WSOC.VTA709H-4P	4	TBD	TBD
WSOC.VTA714X-2P	2	TBD	TBD
WSOC.VTA807A-4P	4	849373016283	10849373016280
WSOC.VTA807AM-4P	4	TBD	TBD
WSOC.WAC709J-4P	4	TBD	TBD
WSOC.WTK510K-6P	6	849373016290	10849373016297
WSOC.WTK614C-4P	4	00849373017495	10849373017492
WSOC.WTK614D-4P	4	00849373017167	10849373017164
WSOC.WTK810C-2P	2	849373016306	10849373016303
WSOC.WWY509N-6P	6	849373016665	10849373016662
WSOC.WWY509NM-6P	6	TBD	TBD
WSOC.WWY513P-6P	6	849373016115	10849373016112
WSOC.WWY513PM-6P	6	849373017686	10849373017683
WSOC.WWY607D-6P	6	849373016122	10849373016129
WSOC.WWY607DM-6P	6	849373016672	10849373016679
WSOC.WWY511H-6P	6	849373016658	10849373016655
WSOC.WWY404B-18P	18	00849373017259	10849373017256
WDOC.SED210A-12P	12	#N/A	#N/A
WSOC.SUD705A-12P	12	#N/A	#N/A
WSOC.MAS408Q-6P	6	#N/A	#N/A
WSOC.MAS508E-6P	6	#N/A	#N/A
WSOC.MAS404C-12P	12	00849373017235	10849373017232



TERMS & CONDITIONS

TERMS AND CONDITIONS OF SALE

Please read this document carefully, as it contains vital information regarding the Buyer’s rights and obligations, including limitations and exclusions that apply.

ON TIME DISTRIBUTION, LLC AND ITS DIVISION ONCORE FILTRATION™ OFFER TO SELL TO THE BUYER EACH PRODUCT SET FORTH ON THE ONCORE ISSUED INVOICE SENT TO THE BUYER ONLY UPON THE FOLLOWING TERMS AND CONDITIONS (COLLECTIVELY, A “SALE AGREEMENT”). BY PLACING AN ORDER FOR A PRODUCT WITH ONCORE, EXECUTING ONCORE’S CREDIT APPLICATION, SENDING OR MAKING A PAYMENT, OR TAKING DELIVERY OF THE PRODUCT, THE BUYER AGREES TO THE TERMS AND CONDITIONS OF THE SALE AGREEMENT AND ACKNOWLEDGES THAT THE PERSON PLACING THE ORDER HAS THE AUTHORITY TO ENTER INTO THE SALE AGREEMENT ON THE BUYER’S BEHALF.

Definitions: “Buyer” shall mean the individual or entity so identified on the OnCore Invoice. “OnCore” shall mean On Time Distribution, LLC, or its division OnCore Filtration™. “Product(s)” shall mean such OnCore product(s) sold to the Buyer according to this Sale Agreement.

These terms and conditions may change from time to time without prior notice and at our sole discretion. The latest version of the terms and conditions will be posted on our website. If the Buyer is unable to view these terms and conditions on the Internet, a copy can be provided to the Buyer by e-mail if requested. Please review these terms before purchasing any product or service.

PRICING

OnCore generally makes its price for a Product known through its website, catalog, price lists, and sales quotes, although prices are subject to change without notice. OnCore’s prices, unless otherwise expressly stated in writing do not include sales, use, excise, value added, or similar taxes or duties. OnCore makes no guarantee that a previously quoted price is available at the time an order is placed. Each request for a product will be filled at the prices set forth on the invoice, or, if no price appears, at OnCore’s current list price for the Product at the time such Product is shipped. Invoices shall be due and payable in full, less applicable earned discount, without deduction or set-off by the Buyer and following the terms set forth on the OnCore invoice. Payment shall be made only by the method authorized by OnCore and when due.

The Buyer acknowledges that payments may not be canceled once they are sent or made. The Buyer certifies that all account information provided to OnCore for payment shall be current, accurate, and complete. Any early payment discount is forfeited if the Buyer’s check or payment is returned for any reason. OnCore may withhold shipment of orders if payment is not received at the invoice “remit to” address per the terms of each invoice. If any monies are or become due to the Buyer from OnCore or any entity owning, owned by, or under common ownership as OnCore, then OnCore may be offset and/or reduce any such amounts owed by the amount of money that the Buyer owes OnCore for any reason. If the Buyer elects to receive invoices through electronic means, then the Buyer will be responsible for providing and updating an email address for receipt of invoices. If the Buyer agrees to the electronic receipt of invoices, the same terms and conditions will apply.

TAXES

The Buyer assumes exclusive liability for any and all taxes, tariffs, fees, duties, withholdings, or like charges, whether domestic or foreign, now imposed or hereafter becoming effective (“Taxes”) related to the Product and its purchases from OnCore, including without limitation, federal, provincial, state and local taxes, value-added taxes, goods and services taxes, stamp, documentary, excise or property taxes, duties, and other governmental charges. The Buyer shall pay these taxes directly if the law permits or will reimburse OnCore if it is required to pay them. The Buyer will provide tax exemption certificates or evidence of tax payment upon request.

ORDER ACCEPTANCE

The receipt of an electronic order via email or FTP upload during normal business hours does not guarantee our acceptance of an order. It also does not guarantee confirmation of our offer to sell either. We reserve the right at any time after the receipt of an order to accept, decline, or limit an order for any reason. We reserve the right to supply less than the quantity ordered of any item. We try to maintain the availability of our systems (i.e., Website, internet, etc.). Should we experience technical difficulties, we are not responsible for orders that are not processed or accepted.

SHIPPING

Charges for shipping and handling will be made in accordance with our current shipping policies, as described below.

The Buyer shall bear all risk and expense for delivery of the Product, including and without limitation, shipping, loading, unloading, storage, freight, and insurance. A Product may be shipped to the Buyer in whole or in part and will be shipped F.O.B. (Freight on Board) OnCore shipping location unless otherwise specified on the face of the invoice or as otherwise stated in its freight policy. Among other things, a signed delivery receipt or bill of lading will constitute proof of delivery. The choice of carrier is made solely at the discretion of the Buyer, and OnCore makes no representation as to the acceptability of a particular carrier. In the event that that the Buyer does not select a carrier for a drop-ship order, OnCore will use its discretion to make the most economical choice. Except when OnCore expressly publishes Special Offers or otherwise agrees in writing, OnCore does not guarantee shipment or delivery by a certain date or time, although OnCore will strive to deliver a Product by the date that it may communicate to the Buyer. OnCore shall not be liable to the Buyer, or any other person, for any loss or damage of any kind which results from delay in shipment, delivery, or failure to give notice of delay, whether or not such delay was caused by OnCore or otherwise. OnCore reserves the right to backorder any Product and to ship from backorder in such order as OnCore determines.

FREIGHT TERMS

OnCore Filtration offers free freight for orders exceeding \$5,000 in qualified regions.

PAYMENT TERMS

Terms of payment are within our sole discretion. The Buyer will furnish OnCore with any requested financial information pertaining to the Buyer's business enterprise for the establishment and/or continuation of a credit line. All goods will be shipped by OnCore to the Buyer on 30 days credit. The credit period shall begin to run from the date of the shipment. Delay in the sending of this invoice to the Buyer, resulting from any cause arising after the dispatch of the invoice by OnCore to the Buyer over which OnCore has no control, shall not extend the period for payment. ACH, check, and wire transfers are accepted. No credit card or cash payments are accepted at this time. All returned checks are subject to OnCore's current check return charge of \$30.

If the Buyer fails to pay their invoice amount within 30 days of the date of shipment, OnCore may recover from the Buyer: interest at the rate of 1.5% per month (18% annual percentage rate) of the total amount outstanding.

CHANGES IN PRODUCTS

We are always updating and revising our product line and services and we may choose to discontinue products or services at any time. Please review our website or email our Customer Service department at customerservice@ontimedistributor.com to inquire about a particular model of interest. OnCore is not held liable for any lack of availability of products or services a Buyer may try to order.

LIMITED WARRANTY

Provided that a Product is not altered or damaged by someone other than OnCore, and for up to 90 days from the date that OnCore ships the Product to the Buyer, OnCore hereby warrants that such Product (other than Promotional or Irregular Goods, as described below) shall (i) conform to OnCore's published specifications and generally released consumer/ end-user limited warranty coverage terms, subject to reasonable variations, manufacturing tolerances, the occurrence of non-material or minor separations and appearance deviations, and (ii) for authorized resellers of OnCore, shall be merchantable for ordinary purposes for which such Product is intended to be used. Notwithstanding the foregoing, once a Product has been installed, such Product is deemed accepted by the Buyer and no warranty shall apply to appearance-related claims. As the Buyer's sole and exclusive remedy for a breach of the above warranty and at OnCore's sole discretion, OnCore will replace a product that does not conform to an applicable OnCore warranty; provided, however, that OnCore shall not be responsible to replace a product which has been damaged or altered by the Buyer or its customers. With respect to a Product sold as "Promotional" or "Irregular" Goods by OnCore, including, without limitation, drops, discontinued items, seconds, or the like, such Product is sold to the Buyer "AS IS/WHERE IS" without any warranty of any kind except as otherwise expressly agreed to or published by OnCore. EXCEPT AS SET FORTH ABOVE AND TO THE MAXIMUM EXTENT PERMITTED BY LAW, OnCore MAKES NO OTHER WARRANTIES FOR A PRODUCT OR UNDER THIS AGREEMENT AND HEREBY DISCLAIMS ALL OTHER WARRANTIES, EXPRESS OR IMPLIED, INCLUDING THE WARRANTY OF FITNESS FOR A PARTICULAR PURPOSE OR USE.

All Buyers must inform Oncore, by providing within the applicable warranty or statutory period, complete and specific itemized detail of all claims in the warranty or at law that such the Buyer may have for such warranty or statutory remedy to be applicable.

OnCore Filtration™ cartridges are guaranteed against defects resulting from faulty workmanship or materials. The liabilities of OnCore Filtration™ are limited solely and exclusively to replacement and do not include any liability for incidental, consequential, or other damages of any kind whatsoever, whether a claim is based upon theories of contract, warranty, negligence, or tort, and, without limitation, do not including shipping charges, labor, installation, or any other losses or expenses incurred in operation or installation.

ORDER CANCELLATION

We strive to exceed our customers' expectations and are dedicated to fast order processing and expedited shipping. If there is a need to cancel an order, a written email request must be sent to our customer service department at customerservice@ontimedistributor.com. Providing the order has not been processed, we will work to accommodate this request. Should an order be ready for shipment, the order will need to be returned per our Return Policy. OnCore may cancel or terminate a Sale Agreement in whole or in part at any time by giving written notice of such to the Buyer. Cancellation or termination by OnCore shall not constitute a waiver or release of any other rights and remedies of OnCore in contract or provided by law or at equity.

INDEMNITY; LIABILITY LIMITATION

The Buyer hereby agrees to indemnify, reimburse in full, defend and hold harmless OnCore, its parent, subsidiaries, affiliates, officers, directors, personnel and agents from and against any and all liability, claims, suits, actions, losses, costs or expenses including (without limitation) reasonable attorneys' fees relating to or arising out of any claim or demand (a) for any Taxes or related penalties and interest, (b) due to the Buyer's breach of the Sale Agreement; (c) that the Buyer's customers or a third party may make against OnCore based upon or arising from damage due to the acts and/or omissions of the Buyer or due to the installation of a Product; (d) related to the failure of any payment sent or made by the Buyer to be honored or to satisfy the requirement of this Agreement; (e) for infringement or misappropriation of a third party's intellectual property rights based upon OnCore's incorporation of any designs, formulas or specifications in a Product where such designs, formulas or specifications have been specifically ordered or requested by the Buyer. To the maximum extent allowable under applicable law and excluding those liabilities that by law OnCore cannot limit or disclaim, (i) OnCore's aggregate liability arising from or relating to this Sale Agreement or a Product, regardless of the cause of action asserted, is limited to the amount paid by the Buyer to OnCore for the applicable Product and (ii) OnCore shall not be liable for any special, incidental, consequential, indirect, or punitive damages, including without limitation, lost revenues, loss of use of the Product, loss resulting from improper storage, processing, delay in delivery or shipment or errors in shipment or labeling, loss of data, or the cost of any substitute Product or related equipment, even if OnCore has been advised of the possibility of such damages.

FORCE MAJEURE

In addition to any excuse provided by applicable law, OnCore is excused from liability for non-delivery or delay in the delivery of Products arising from any event beyond its reasonable control, whether or not foreseeable by either party, including but not limited to labor disturbance, war, fire, accident, adverse weather, inability to secure transportation, pandemic, governmental act or regulation, and other causes or events beyond our reasonable control, whether or not similar to those listed above.

GOVERNING LAW AND ATTORNEYS' FEES

Each Sale Agreement shall be governed and construed in accordance with the laws of the State of South Carolina, without reference to any conflicts of law principles. Any litigation instituted by the Buyer against OnCore that pertains in any manner to this Agreement or the Product must be instituted in the Court of Common Pleas, Florence County, South Carolina. The Buyer agrees to be subject to the jurisdiction of this court. Any such litigation instituted against the Buyer by OnCore may, at OnCore's option, be instituted in the courts above identified or in the state in which the Buyer maintains its principal place of business. The U.N. Convention on Contracts for the International Sale of Goods shall not apply to this Sale Agreement. If any term, provision, or condition of a Sale Agreement is held invalid or unenforceable, the same shall not invalidate or otherwise affect any other provision thereof.

In the event legal action is undertaken by OnCore to collect any amounts due to OnCore by the Buyer hereunder and if OnCore prevails in such action, then the Buyer shall reimburse OnCore for its reasonable attorney fees and costs incurred in conjunction with such action, which amount shall not exceed the maximum amount allowed by law of the forum in which such action is brought.

ENTIRE AGREEMENT; MODIFICATIONS

Each Sale Agreement constitutes the entire agreement between OnCore and the Buyer concerning the subject matter thereof and supersedes all prior oral or written agreements. The Sale Agreement may not be amended or modified, except by a further written agreement signed by an authorized representative of OnCore. OnCore reserves the right to make reasonable changes to a Sale Agreement, including changes to packaging, testing, specifications, designs, and delivery schedules. The terms and conditions of any purchase order or other instrument issued by the Buyer or its agent in connection with this Sale Agreement or a Product that is in addition to or inconsistent with the terms and conditions of this Agreement are null and void and shall not be binding on OnCore.

RETURN AND DAMAGED PRODUCT POLICY RETURNS

Buyers may return product(s) within 30 days of purchase by contacting our Customer Service Representative (CSR) via email at customerservice@ontimedistributor.com to obtain an authorized Returns Material Authorization (RMA) number. All returns must have an RMA number to be processed for credit. Along with the number, the CSR will provide the Buyer with the return address to where the package is to be returned. An RMA number is only valid for 30 days from the date of issuance.

Please refer to the following when requesting an RMA number:

- ALL RETURNS must be received in their original packaging that is clearly marked with the RMA number. If a return was sent before receiving an RMA number, OnCore cannot guarantee credit will be provided. If we can locate the appropriate order number, a credit will be issued providing the product is not damaged and received in a resalable condition. If a product is returned to OnCore that should not have been returned, we will not process credit and will dispose of the item accordingly. If a return is sent to the wrong location, a credit will not be issued.
- STANDARD PRODUCTS must be returned in original packaging and in a resaleable condition to be eligible for credit. Any returns that have been opened (out of packaging-including individually packaged items part of a multi-unit pack), used, damaged, or do not contain all original parts, will not be eligible for a credit.
- CUSTOM PRODUCTS or SPECIAL ORDERS may not be returned and are not eligible for credit.
- DEFECTIVE PRODUCT - Customer service will require an email with a complete description of the issue. We may ask to have the product returned to us for inspection. Return label/call-tag fees will be covered by OnCore Filtration™ if the item is found to have issues pertaining to manufacturing defects. If no defect is found, the customer is responsible for the shipping fees. If returned to the wrong location, a credit will not be issued.
- WRONG ITEM ORDERED AND SHIPPED - If a Buyer orders the wrong item and wishes to return it, an authorized RMA number is required. Return label/call-tag fees, along with a 15% restocking fee, will be charged to the customer. If returned to the wrong location, a credit will not be issued.
- ADDRESS CHANGES - Any address changes after the package(s) have shipped will need to be to be requested via email to our CSR. Any fees incurred will be charged to the customer. PLEASE NOTE-Any package that was shipped via FedEx Ground Economy (formally Smart Post), USPS, or DHL is not eligible for an address change or to be rerouted to a new address.

PARCEL SHIPPING CLAIMS

- If the contents of the package are delivered damaged, please email our CSR with the order number along with images of the damaged product in one email. Do not contact the shipping agent or return to sender.
- If shipped via FedEx Ground- we will file a damage claim and issue a credit, if eligible. Unless additional insurance was purchased, the claim only covers up to \$100 of the item value (plus shipping).
- If shipped via FedEx Ground Economy (formally Smart Post) and delivered FedEx Ground- we will file a damage claim and issue a credit ONLY if we are paid.
- If shipped via FedEx Ground Economy (formally Smart Post) and delivered USPS- no claim will be filed, and a credit will not be issued.
- If shipped via USPS or DHL- A damage claim cannot be filed, and a credit will not be issued.

LOST PACKAGE or MIS-DELIVERED PACKAGE

- Any suspected lost or misdelivered package should be notified to our CSR via email, including the order number.
- If shipped via FedEx Ground - A trace for a lost package can only be requested within 5 days of the delivery date. After a trace has been initiated and the package is still not received by the customer, we will file a lost package claim with FedEx and a credit will only be issued if we are paid.
- If shipped via FedEx Ground – If the Buyer did not receive the package, and it is past the time limitations to request a trace, but the tracking number shows the package as “Delivered,” we will not file a lost package claim and a credit will not be issued.
- If shipped via FedEx Ground Economy (formally Smart Post) and the package was delivered by FedEx Ground, a trace can only be requested within 5 days of the delivery date. If a lost package claim is filed, a credit will only be issued if we are paid. Any requests for FedEx Ground or FedEx Ground Economy (formally Smart Post) trace after 5 days from the delivered date will not be considered.
- If shipped via FedEx Ground Economy (formally Smart Post) and delivered by USPS – a trace is not available, a claim cannot be filed, and a credit will not be issued.
- If shipped via USPS or DHL, a trace is not available, and a credit will not be issued.
- OnCore Filtration™ is not responsible for any product that is lost, stolen, or misdelivered via USPS parcel post mail or DHL. We recommend selecting FedEx Ground service for tracking visibility.

REFUSED SHIPMENTS

Deliveries that are refused will not be refunded. Please refer to our Return Policy above and follow the instructions if the Buyer wishes to return the product(s). This includes packages that are delivered damaged. Please refer to our Shipping Damage Policy.

UNDELIVERABLE ADDRESS

If a Shipment is returned to the facility due to an undeliverable address, the Buyer is responsible for any shipping costs incurred to reship the order, along with a 15% restocking fee.

INTERNATIONAL ORDERS

All International orders will be shipped via DHL or FedEx International Economy or Priority unless otherwise requested when the order is placed. OnCore will attempt to accommodate shipping requests made within reasonable timeframes; however, OnCore cannot guarantee the acceptability of any carriers. Buyers are responsible for all import duties, taxes, and additional fees that customs agencies may impose.

FREIGHT CLAIM (LTL/TRUCKLOAD)

The consignee is responsible to file a freight claim on a lost or damaged product with the carrier. Products must be counted and inspected immediately upon receipt from the carrier. Items missing or damaged should be clearly documented on the Bill of Lading (BOL) and signed while the driver is present. Freight claims should then be filed with the carrier. If any concealed damage is noted after receipt of goods, then the carrier should be notified immediately, and an inspection of the product(s) is requested so that the proper liability may be identified, and appropriate claim(s) filed.

- A shipper has 9 months to file a freight claim. A shipper has 15 days to get an inspector to come in to view damaged freight. A carrier has 30 days to acknowledge in writing that they received the shipper's freight claim. The carrier has 120 days to issue a resolution.

BUSINESS HOURS

Customer Service: Monday-Friday (8:30 a.m. to 5:00 p.m. EST)

Shipping/Distribution: Monday-Friday (8:00 a.m. to 4:30 p.m. EST)

Holidays Observed:

New Year's Day

Memorial Day

Independence Day

Labor Day

Thanksgiving Day

Day after Thanksgiving

Christmas Day



Empowering the next generation of young athletes across the nation!

At OnCore, giving back is at the heart of what we do. That's why we proudly stand behind TEAM USA Artistic Swimming, empowering the next wave of champions across the nation. We're excited to continue supporting their success, promoting the importance of water purity, and helping to elevate the sport of artistic swimming nationwide for years to come.



OnCoreFiltration.com
Call: 843-620-6260

