



**ONCORE**<sup>®</sup>  
FILTRATION

# 2025 Catalog

Pool & Spa Filtration Products

YOU ASKED. WE LISTENED!  
NEW SIMPLIFIED PART NUMBERS



V2.0



**“At OnCore Filtration, we deliver healthy, trusted solutions for clean, clear water. Our mission is to fuse innovation with dependability, enriching pool and spa experiences for healthier living, peace of mind, and the success of our partners.”**

Jose Perez, President of OnCore Filtration™

**OnCoreFiltration.com**

**Call: 843-620-6260**

1665 Joe Rogers Jr Blvd. Manning, SC 29102





# CONTENTS

ABOUT ONCORE	4
WHY ONCORE?	5
PRODUCT FEATURES	6
ONCORE MEDIA	7
<b>USING THIS CATALOG - NEW PART NUMBER LEGEND</b>	<b>8</b>
ONCORE End Caps	9
Identify & Measure Your Filter Cartridge	10

## **ONCORE POOL REPLACEMENT FILTERS** 11-12

Find Your Pool Filter by Size

4" POOL FILTERS	13
7" POOL FILTERS	13-15
8" POOL FILTERS	15-16
9" POOL FILTERS	16
10" POOL FILTERS	17

## **ONCORE SPA REPLACEMENT FILTERS** 18-19

Find Your Spa Filter by Size

2-4" SPA FILTERS	20
5" SPA FILTERS	20-22
6" SPA FILTERS	23
7" SPA FILTERS	23-24
8" SPA FILTERS	24

## **POOL OEM/CROSS REFERENCE** 25-31

CLEANING FILTERS 32

## **SPA OEM/CROSS REFERENCE** 33-40

## **UPC POOL & SPA CODES**

**CROSS- REFERENCE ONCORE INTERNAL PART#'s** 41-44

Terms and Conditions 45-46

**“At OnCore Filtration,  
we deliver healthy, trusted  
solutions for clean, safe water.  
Our mission is to fuse innovation  
with dependability, enriching  
pool and spa experiences for  
healthier living, peace of mind,  
and the success of our  
partners.”**





# WHY ONCORE?



OnCore Filtration™ products are proudly manufactured and assembled in Manning, South Carolina. With a 72,000 square foot manufacturing facility, OnCore Filtration™ offers the latest tech and vertical integrations. The OnCore team has over 60 years of filtration experience and over 30 years in the Pool and Spa market to help meet our customers' individualized needs. All of our items are proudly assembled in the USA.



State-of-the-art equipment and best manufacturing practices makes OnCore Filtration™ always FAST



Incorporating the finest polyester material and molded cores makes OnCore Filtration™ always PURE



Dedication to a quality, value and exceptional customer service makes OnCore Filtration™ always TRUE



## Building Business Success Together

### ONCORE • ON POINT

Leading the industry with cutting-edge Point Bonded Media and innovative technology, we ensure every solution is precisely tailored to meet customer needs.

### ONCORE • ON TIME

You can count on us to deliver the products you need, when you need them, backed by state-of-the-art equipment and best-in-class manufacturing.

### ONCORE • ON DECK

We transform pools and spas into sanctuaries of health and happiness, guaranteeing satisfaction and peace of mind with every product.

### ONCORE • ON SITE

Preferred by service technicians everywhere, our filtration products are reliable, high-quality, and help build lasting customer loyalty.

### ONCORE • ON CALL

We exceed expectations through exceptional value, strong support, and unmatched customer service, building trust and reliability in every interaction.

### ONCORE • ON TARGET

Our focus is to fuel sustainable growth for our company and partners, solidifying our position as the #1 brand in the industry.

Our passionate commitment to innovation and excellence is what drives us to lead and redefine the pool and spa filtration industry.



# PRODUCT FEATURES

## QUICK CHECK

UNIQUE ONCORE PART NUMBER

## STRONG CORES

INJECTION-MOLDED CORES MADE FROM 100% VIRGIN ABS OR PP

## ROBUST END CAPS

MADE FROM TIME-TESTED CHLORINE & MILDEW RESISTANT URETHANE SYSTEM

## SYMMETRIC OPENINGS

OF CORES PROVIDES AN EVEN FILTER LOADING DURING USE

## FINEST PORES

FINE DENIER, HIGH-FILAMENT COUNT SPUNBOND POLYESTER FOR THE BEST FILTRATION

## RUGGED POINT-BONDED

PATTERNED CONSTRUCTION ALLOWS FOR EVEN LOADING

## BREAK RESISTANT BANDS

STRATEGICALLY PLACED TO SUPPORT THE MEDIA PLUS MAINTAIN PLEAT SPACING

## FLAWLESS FIT

PRECISELY ENGINEERED TO MEET POOL AND SPA SPECIFICATIONS





## POINT BONDING

In modern polyester spun-bonded processes, continuous fibers are spun at high speeds and interlock to form a web, becoming the filtration media. To ensure stability, the fibers within this web must be securely locked.

Point bonding achieves this by running the web over a calendar roller with a patterned surface. The raised areas create dimples in the media, forming a strong weld pattern that locks the fibers in place while allowing movement between them, enabling the media to adapt to flow conditions and capture particles of different sizes.

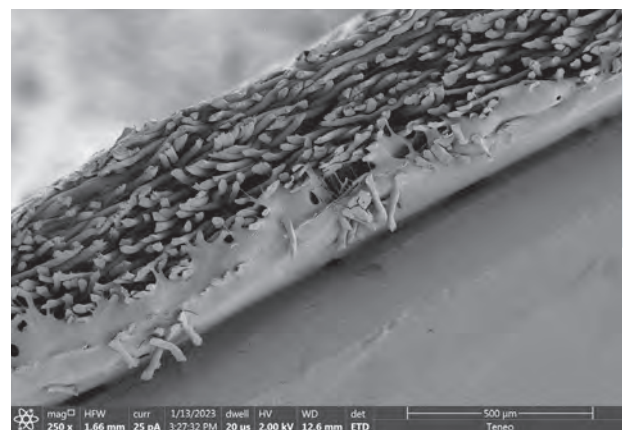
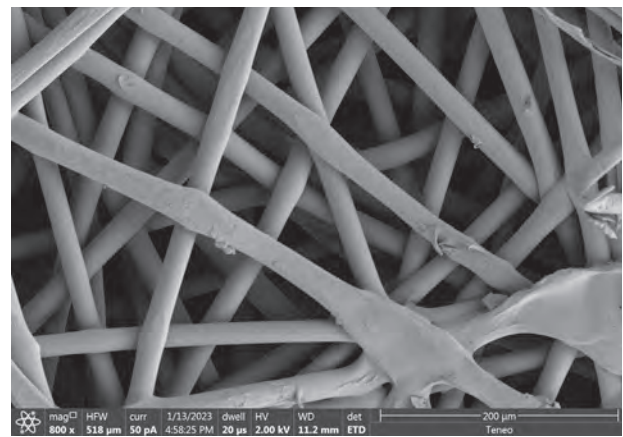
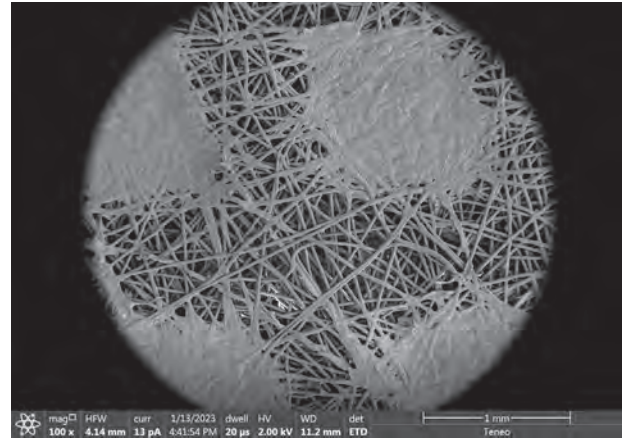
In pool and spa applications, these welds promote filter cake formation, enhancing filtration efficiency over time. As water passes over the surface, it channels around the welds, improving the process.

When the filter becomes loaded (seen as decreased flow in spas or increased tank pressure), it can be removed and cleaned. The consistent weld pattern facilitates debris release, preventing full clogging of the media and simplifying cleaning.

## WEB LOFT

Oncore uses low denier, high fiber count polyester media to achieve many crossover points inside the web. This creates more pores of finer consistency allowing the media to be very efficient at removing debris. Smaller and more abundant pores achieve cleaner water sooner. Studies have shown a faster drop in turbidity (water cloudiness) when using a low denier Point Bonded media. As seen on the cross section of the web, welds on the surface of the media do not penetrate all the way through. This allows the water to travel throughout the loft of the web working its way out the other side.

The approach of Point Bonded, low denier, high fiber count, high crossover-point media delivers more fiber surface area than our competitors allowing us to provide the best filtration in the market.





# PART NUMBER LEGEND

## HOW TO READ THE **NEW** SIMPLIFIED ONCORE PART NUMBER

<b>OC</b>	<b>8</b>	<b>06</b>	<b>A</b>	<b>M</b>
PREFIX	OUTER DIAMETER	LENGTH	SERIES DIGIT	MEDIA TYPE
Indicates OnCore	Single digit rounded down to the closest integer. 10" Diam = J 11" Diam = K	Two digit end cap to end cap length rounded down to the closest integer	Indicates sequence of diameter / length. Example: A = 1st in SERIES, B = 2nd..	<b>ANTIMICROBIAL MEDIA</b> An 'M' is added at the end of the #

INTERNAL PART NUMBER CROSS REFERENCE - PAGE 41

## OEM NAMES & CODES

(Original Equipment Manufacturer)

OEM CODE	OEM
ADE	ADVANTAGE ELECTRIC
ALC	ALCOVE
AQS	AQUASTAR
ARS	ARTESIAN SPAS
AST	ASTRAL
BEW	BEST WAY
BHU	BAKER HYDRO ULTRA
BHY	BAKER HYDRO
BUF	BULFROG SPAS
CAL	CAL SPAS
CLD	CALDERA SPAS
CLS	COLEMAN SPAS
COL	COLECO
CST	COAST SPAS
DAK	DAKOTA SPAS
DIV	DISCOVERY SPAS
DON	DIMENSION ONE
DOU	DOUGHBOY
DRM	DREAM MAKER SPAS
FFL	FREEFLOW SPAS
FWP	FOX WAL-PAK
GRF	GENERAL FOAM
GTS	GATSBY SPAS

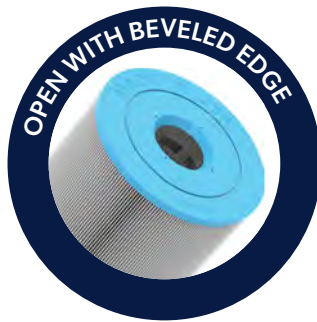
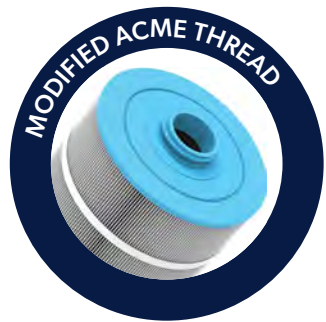
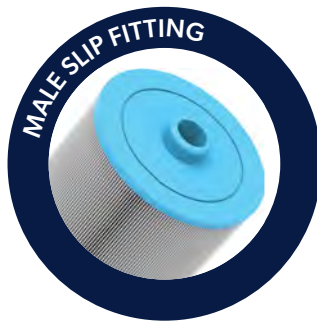
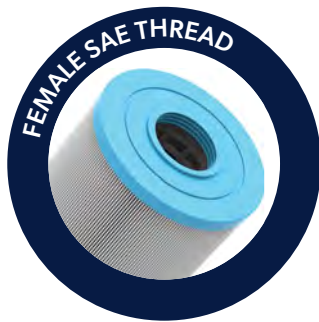
OEM CODE	OEM
HAR	HARMSCO
HAU	HAUGHS
HAY	HAYWARD INDUSTRIES
HRC	HERCULES
ICN	ICON SPAS
INF	INFINITY SPAS
INX	INTEX
JAN	JANDY (FLUIDRA)
JCC	JACUZZI COMPETITION
JCP	JACUZZI PREMIUM
JCW	JACUZZI WHIRLPOOL
JCZ	JACUZZI POOL
LAS	LA SPAS
LBS	LEISURE BAY SPAS
LBY	LEISURE BAY MANUFACTURING
MAS	MASTER SPAS
MAX	MAAX SPAS
MTC	MARTEC
MUS	MUSKIN
NEM	NEMCO
OXY	ONYX SPAS
PLC	POOLCO
PLT	PENTAIR (PLEATCO)
PMQ	MARQUIS SPAS

OEM CODE	OEM
PNA	PENTAIR (AMERICAN PRODUCTS)
PNC	PENTAIR (CLEAN AND CLEAR)
PND	PENTAIR (COMMANDER)
PNF	PENTAIR (PAC FAB)
PNX	PENTAIR (PUREX)
PRM	PREMIER
SUN	SUNRISE
RBW	PENTAIR (RAINBOW)
RWS	REC WAREHOUSE
SAN	SANTANA
SIB	SPA IN BOX
SRG	SARATOGA SPAS
STG	STRONG INDUSTRIES
STR	PENTAIR (STA-RITE)
SUD	SUNDANCE SPAS
SUN	SUNRISE SPAS
SYL	SYLVIAN
UST	US TOOLING
VAK	VAK PAK
VTA	VITA SPAS
WAC	WATERCO
WET	WET INSTITUTE
WTK	WATKINS HOT SPRINGS
WWY	WATERWAY PLASTICS





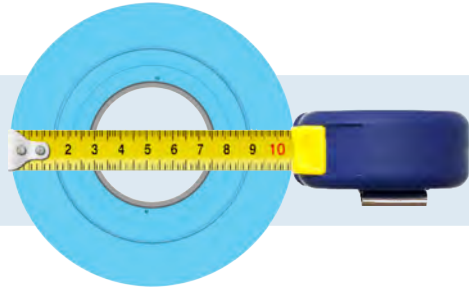
# END CAPS



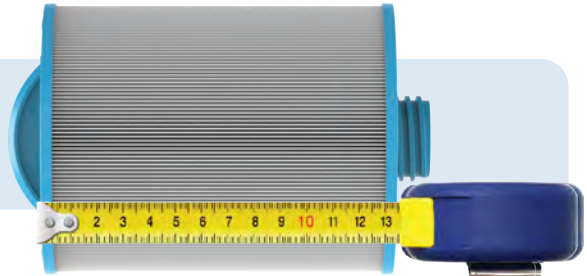


# IDENTIFY & MEASURE

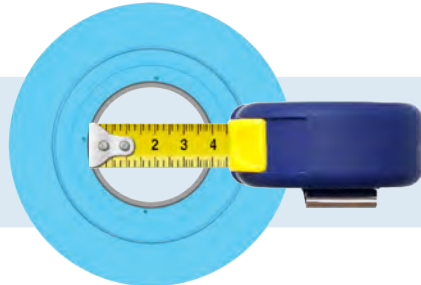
**1** MEASURE THE OUTER DIAMETER  
(+/- 1/16)



**2** MEASURE THE LENGTH  
Measure the the edge of the top end cap to the edge of the bottom end cap in inches (+/- 1/16).  
*Do not include any handles or any extensions.*



**3** MEASURE THE INSIDE DIAMETER  
Top & Bottom.  
(+/- 1/16)



**4** OEM NAME / MODEL NUMBER  
If possible note the original equipment manufacturer

**5** COUNT THE PLEATS  
Take note if there is a center core.

## FIND YOUR FILTER

IN THIS CATALOG  
OUTER DIAMETER - PAGE 12  
OEM CROSS REFERENCE - PAGE 22

**ONLINE**  
CHECK OUT OUR NEW ONLINE  
PRODUCT FINDER ON OUR WEBSITE  
SCAN HERE  
[ONCOREFILTRATION.COM](http://ONCOREFILTRATION.COM)







# POOL REPLACEMENT FILTERS

BY MEASUREMENT





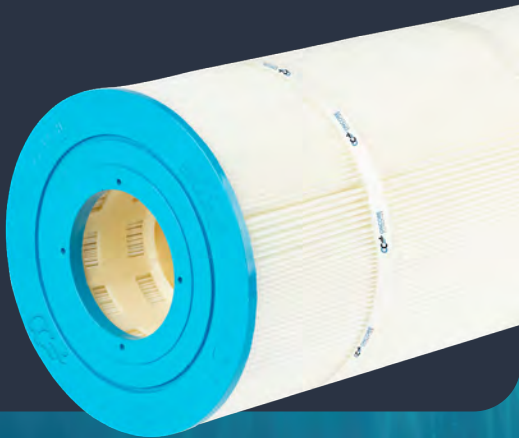
ONCORE

# EVERCLEAR™

**POINT BOND  
POOL REPLACEMENT FILTERS**

## OUR RUGGED & FINEST POOL & SPA CARTRIDGE LINE

These replacement filters have an injection-molded core made from 100% virgin ABS or PP. The cores are wrapped with our finest high-filament count spun-bond polyester. Then capped with robust end caps made from a chlorine and mildew resistant urethane. This time-tested process creates a filter that is easy to use and resistant to cracking and chemical deterioration.



ONCORE

# EVERFLOW+™

**ANTIMICROBIAL  
POOL REPLACEMENT FILTERS**

## MILDEW AND BACTERIA RESISTANT LINE

These pool replacement filters are made to prevent mildew and bacteria build up on the cartridge. Each filter has an injection-molded core made from 100% virgin ABS or PP. Our EverFlow+ antimicrobial high-filament count spun-bond polyester is wrapped around the cores. Then capped with robust end caps made from a chlorine and mildew resistant urethane system. This time-tested process creates a filter that is easy to use and resistant to cracking and chemical deterioration.



# POOL | 4"

## BY MEASUREMENT

OC PART #	Stock	Type	DESCRIPTION	OD INCHES	LENGTH INCHES	TOP HOLE INCHES	BOTTOM HOLE INCHES	MEDIA WEIGHT OZ / YD2	MEDIA SQ FT	CASE QTY
OC-411D	N	Pool	Hayward C-120, MicroStar-Clear (in-line)	4 5/8	11 7/8	2 1/16	2 1/16	4	12	6
OC-411E	N	Pool	Hayward C-200, MicroStar-Clear, American Commander II	4 5/8	11 7/8	2 1/16	2 1/16	4	20	6
OC-411F	Y	Pool	Hayward MicroStar-Clear C225, American Commander II	4 5/8	11 7/8	2 1/16	2 1/16	4	25	6

# POOL | 7"

## BY MEASUREMENT

OC PART #	Stock	Type	DESCRIPTION	OD INCHES	LENGTH INCHES	TOP HOLE INCHES	BOTTOM HOLE INCHES	MEDIA WEIGHT OZ / YD2	MEDIA SQ FT	CASE QTY
OC-709E	Y	Pool	Hayward, Star-Clear C250, open w/molded gasket	7	9 11/16	3	3	4	25	4
OC-725F	N	Pool	Poolco120	7	25 1/5	3	3	4	120	1
OC-732G	N	Pool	Poolco150	7	32 1/4	3	3	4	150	1
OC-711D	N	Pool	Pentair Purex CF 40, CFW Filter CF-40/120, CFM Filter CF-40/120, (3 required)	7	11 1/8	2 15/16	2 15/16	4	40	4
OC-714T	Y	Pool	Pentair Clean & Clear Plus 240, American Quantum, (4 required)	7	14 1/8	3	3	4	60	4
OC-714G	N	Pool	Hayward SwimClear C2025	7	14 3/16	3	3	4	56	4
OC-714H	Y	Pool	Hayward Easy Clear C400, C-410, open w/molded gasket	7	14 3/16	3	3	4	40	4
OC-714HM	N	Pool	Hayward Easy Clear C400, C-410, open w/molded gasket (Antimicrobial)	7	14 3/16	3	3	4	40	4
OC-714K	N	Pool	Hayward, Super-Star-Clear C2000, SwimClear C2020, Sta-Rite PRC 50, open w/molded gasket	7	14 3/16	3	3	4	50	4
OC-716B	N	Pool	Pentair Purex CFW Filter CFW-67.5/405, (6 required), (Tango Pools)	7	16	2 15/16	2 15/16	4	68	2
OC-718B	N	Pool	Pentair / Pac Fab Seahorse 75; 300, (4 required) (Stainless Steel Tank) Sea Horse FSH-300 (Fiberglass Tank)	7	18 7/16	2 5/8	2 5/8	4	75	2
OC-719U	N	Pool	Hayward C7030, HCF7030, HCF7030C	7	19 1/8	3	3	4	200	4
OC-719Q	N	Pool	Sta-Rite Posi-clean FCP50, TXC50, TXC50B, FCP50B, FCP100, TXC 100	7	19 7/16	3	3	4	50	2
OC-719P	N	Pool	Pentair Purex CF 60 CF-60/180 (3 required)	7	19 5/8	2 15/16	2 15/16	4	60	2
OC-719D	Y	Pool	Hayward SwimClear C3025, C3030, open w/molded gasket	7	19 5/8	3	3	4	81	4
OC-719E	Y	Pool	Hayward Star-Clear C500, Pentair Purex CF-50, open/w molded gasket	7	19 5/8	3	3	4	50	4
OC-719F	Y	Pool	Hayward Easy Clear C550, open w/molded gasket	7	19 5/8	3	3	4	55	2
OC-719G	Y	Pool	Hayward C-570, SwimClear C3020, Super-Star-Clear C3000, C3000S (stainless steel) Sta-Rite PRC 75, open w/molded gasket	7	19 5/8	3	3	4	75	4
OC-720B	Y	Pool	Pentair Clean & Clear Plus 320, (4 required)	7	20 1/16	3	3	4	80	4

OC PART #	Stock	Type	DESCRIPTION	OD INCHES	LENGTH INCHES	TOP HOLE INCHES	BOTTOM HOLE INCHES	MEDIA WEIGHT OZ / YD2	MEDIA SQ FT	CASE QTY
OC-725A	Y	Pool	Hayward SwimClear C-4025, C-4030, open w/ molded gasket	7	25 1/2	3	3	4	106	4
OC-725B	Y	Pool	Hayward Super-Star-Clear C4000, SwimClear C4020, Super-Star-Clear C4000S (stainless steel), open w/molded gasket	7	25 1/2	3	3	4	100	4
OC-725BM	Y	Pool	Hayward Super-Star-Clear C4000, SwimClear C4020, Super-Star-Clear C4000S (stainless steel), open w/molded gasket (Antimicrobial)	7	25 1/2	3	3	4	100	4
OC-725C	Y	Pool	Hayward Super-Star-Clear C-4500, SwimClear C-4520, Pentair Purex CF 105, open w/molded gasket	7	25 1/2	3	3	4	112	4
OC-725CM	N	Pool	Hayward Super-Star-Clear C-4500, SwimClear C-4520, Pentair Purex CF 105, open w/molded gasket (Antimicrobial)	7	25 1/2	3	3	4	112	4
OC-725E	N	Pool	Pentair Purex CF 105 CF-105/315 (3 required)	7	25 5/8	2 15/16	2 15/16	4	105	2
OC-726E	Y	Pool	Pentair Pentair Clean & Clear Plus 520 (pre 1998) / American Quantum, CM, RPM, 125/500	7	26	3	3	4	125	4
OC-726F	Y	Pool	Pentair Clean & Clear Plus 420, Waterway Crystal Water	7	26	3	3	4	105	4
OC-726FM	Y	Pool	Pentair Clean & Clear Plus 420, Waterway Crystal Water (Antimicrobial)	7	26	3	3	4	105	4
OC-729J	N	Pool	Sta-Rite Posi-clean TXC75, FCP75	7	29	3	3	4	75	2
OC-729D	Y	Pool	Hayward Star-Clear C750, open w/molded gasket	7	29 3/8	3	3	4	75	1
OC-729DM	N	Pool	Hayward Star-Clear C750, open w/molded gasket (Antimicrobial)	7	29 3/8	3	3	4	75	1
OC-730A	N	Pool	Pentair / Pac Fab Seahorse 500 (Stainless Steel Tank), Sea Horse FSH-500 (Fiberglass Tank), (4 required)	7	30 7/16	2 5/8	2 5/8	4	125	1
OC-732F	Y	Pool	Pentair Clean & Clear Plus 520	7	32	3	3	4	130	4
OC-732FM	Y	Pool	Pentair Clean & Clear Plus 520 (Antimicrobial)	7	32	3	3	4	130	4
OC-732A	Y	Pool	Hayward SwimClear C5025, C5030, open w/ molded gasket	7	32 3/4	3	3	4	131	4
OC-732B	Y	Pool	Hayward Super-Star-Clear C5000 SwimClear C5020, open w/molded gasket	7	32 3/4	3	3	4	126	4
OC-732C	Y	Pool	Hayward Super-Star-Clear C5500 SwimClear C5520, open w/molded gasket	7	32 3/4	3	3	4	137	4
OC-732CM	N	Pool	Hayward Super-Star-Clear C5500 SwimClear C5520, open w/molded gasket (Antimicrobial)	7	32 3/4	3	3	4	137	4
OC-714TM	Y	Pool	Pentair Clean & Clear Plus 240, American Quantum, (4 required) (Antimicrobial)	7	14 1/8	3	3	4	60	4
OC-719DM	Y	Pool	Hayward SwimClear C3025, C3030, open w/ molded gasket (Antimicrobial)	7	19 5/8	3	3	4	81	4
OC-720BM	Y	Pool	Pentair Clean & Clear Plus 320, (4 required) (Antimicrobial)	7	20 1/16	3	3	4	80	4
OC-725AM	Y	Pool	Hayward SwimClear C-4025, C-4030, open w/ molded gasket (Antimicrobial)	7	25 1/2	3	3	4	106	4
OC-726B	Y	Pool	Jandy Industries CL340, CV340	7 1/8	26 15/16	3	3	4	85	4
OC-726C	Y	Pool	Jandy Industries CL460, CV460	7 1/8	26 15/16	3	3	4	115	4
OC-726CM	N	Pool	Jandy Industries CL460, CV460 (Antimicrobial)	7 1/8	26 15/16	3	3	4	115	4



# POOL | 7"

## BY MEASUREMENT

OC PART #	Stock	Type	DESCRIPTION	OD INCHES	LENGTH INCHES	TOP HOLE INCHES	BOTTOM HOLE INCHES	MEDIA WEIGHT OZ / YD2	MEDIA SQ FT	CASE QTY
OC-732E	Y	Pool	Jandy Industries CL580, CV580	7 1/8	32 7/8	3	3	4	145	4
OC-711C	N	Pool	Pentair / Pac Fab Mytilus FMY 50	7 7/8	11 1/8	3 1/16	3 1/16	4	50	4
OC-714L	N	Pool	Jandy Industries CT-50 (open w/step), Waterco Trimline CC-50 (open w/step)	7 1/4	14 5/8	3 1/16	3 1/16	4	50	2
OC-719H	N	Pool	Jandy Industries CT-75 (open w/step), Waterco Trimline C-75 (open w/step)	7 1/4	19 1/2	3 1/16	3 1/16	4	75	2
OC-719T	N	Pool	Waterco C-50	7 1/4	19 11/16	3	3	4	50	2
OC-729E	N	Pool	Jandy Industries CT-100, Waterco Trimline CC-100	7 1/4	29 3/8	3 1/16	3 1/16	4	100	2
OC-714U	N	Pool	Pentair / Pac Fab Mytilus-B 60 GPM MY 60, Mitra 60 GPM MA-60/160, Mytilus 60 60 GPM MY 60, Mytilus-B 140 GPM MY 140 (2 required), Wet Institute Modufilter M-180 (3 required)	7 7/8	14 1/16	3 1/16	3 1/16	4	60	2
OC-722C	N	Pool	Pentair / Pac Fab Mytilus 80 80 GPM MY 80, Mitra 80 GPM MA-80, Mytilus-B GPM MY 80, Mytilus FMY 80	7 7/8	22 1/8	3 1/16	3 1/16	4	80	2
OC-722D	N	Pool	Pentair / Pac Fab Mytilus B 100 GPM MA-100/160, Mitlus FMY 100, Mytilus 100 GPM MY 100, Mitra 100 GPM MA-100-160, Wet Institute Modufilter M-330 (3 required)	7 7/8	22 1/8	3 1/16	3 1/16	4	100	2
OC-733A	N	Pool	Pentair / Pac Fab My 150, GPM Pac-Fab, Mytilus FMY150	7 7/8	33 3/8	3 1/16	3 1/16	4	150	1

# POOL | 8"

## BY MEASUREMENT

OC PART #	Stock	Type	DESCRIPTION	OD INCHES	LENGTH INCHES	TOP HOLE INCHES	BOTTOM HOLE INCHES	MEDIA WEIGHT OZ / YD2	MEDIA SQ FT	CASE QTY
OC-817A	N	Pool	Hayward C751, Sta-Rite PXC-75 open w/ molded gasket	8 15/16	17 3/8	4	4	4	75	1
OC-817C	Y	Pool	Hayward X-Stream CC100, open w/molded gasket	8 15/16	17 3/8	4	4	4	100	1
OC-817CM	Y	Pool	Hayward X-Stream CC100, open w/molded gasket (Antimicrobial)	8 15/16	17 3/8	4	4	4	100	1
OC-817D	Y	Pool	Hayward Star-Clear Plus C900, Sta-Rite PXC-95 open w/molded gasket	8 15/16	17 3/8	4	4	4	90	1
OC-817DM	Y	Pool	Hayward Star-Clear Plus C900, Sta-Rite PXC-95 open w/molded gasket (Antimicrobial)	8 15/16	17 3/8	4	4	4	90	1
OC-817F	Y	Pool	Waterway Clearwater II Pro-Clean 75 above ground pool cartridge 817-0075N	8 15/16	17 3/8	4	4	4	75	1
OC-817G	N	Pool	upgrade to Hayward X-Stream CC100, open w/ molded gasket	8 15/16	17 3/8	4	4	4	125	1
OC-823A	Y	Pool	Hayward X-Stream CC150	8 15/16	23 1/4	4	4	4	150	1
OC-823AM	Y	Pool	Hayward X-Stream CC150 (Antimicrobial)	8 15/16	23 1/4	4	4	4	150	1

# POOL | 8-9"

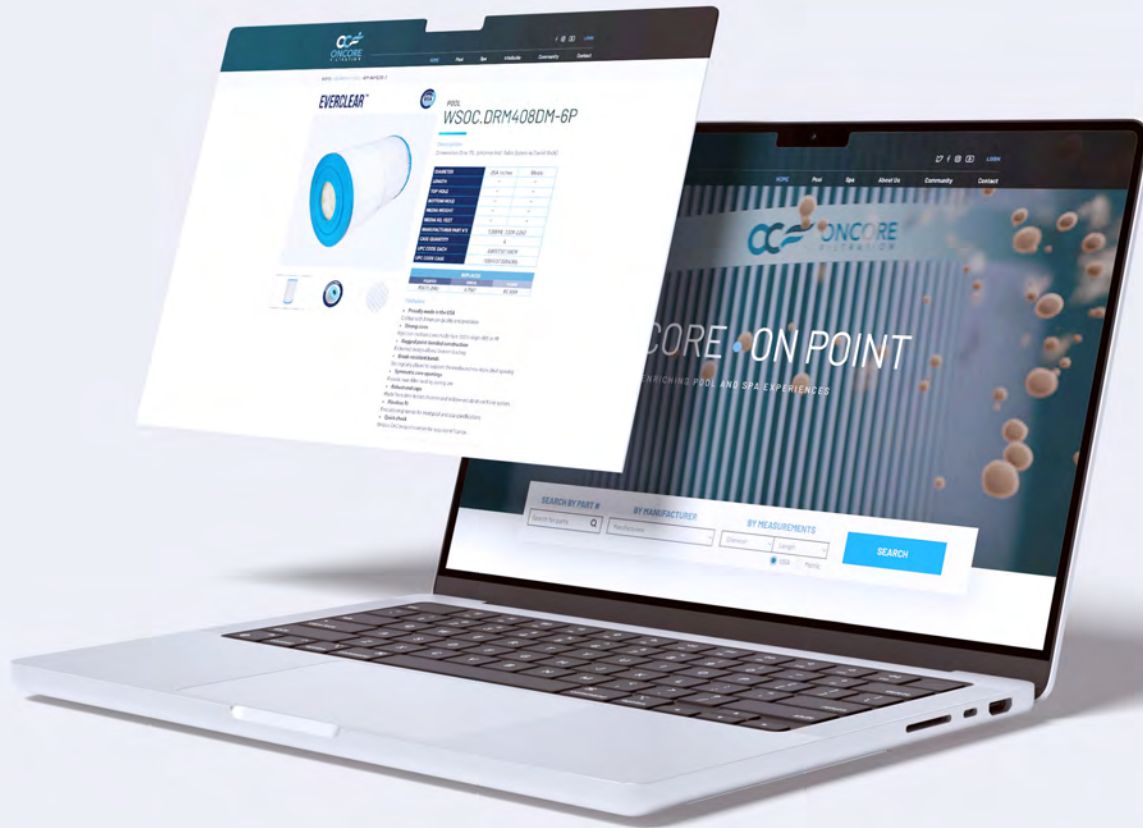
## BY MEASUREMENT

<b>OC-823C</b>	Y	Pool	Hayward Star-Clear Plus C1200	8 15/16	23 1/4	4	4	4	120	1
<b>OC-823CM</b>	Y	Pool	Hayward Star-Clear Plus C1200 (Antimicrobial)	8 15/16	23 1/4	4	4	4	120	1
<b>OC-823H</b>	Y	Pool	Waterway Clearwater II, Pro-Clean 150 above ground pool cartridge	8 15/16	23 1/4	4	4	4	150	1
<b>OC-823HM</b>	Y	Pool	Waterway Teleweir 50 (Antimicrobial)	8 15/16	23 1/4	4	4	4	150	1
<b>OC-823K</b>	Y	Pool	Waterway Clearwater II 200 ctdge, p/n 817-0200N	8 15/16	23 1/4	4	4	4	200	1
<b>OC-823L</b>	N	Pool	Hayward X-Stream 175	8 15/16	23 1/4	4	4	4	175	1
<b>OC-823E</b>	Y	Pool	Jandy Industries CS 100	8 15/16	23 5/16	4	4	4	100	1
<b>OC-823EM</b>	Y	Pool	Jandy Industries CS 100 (Antimicrobial)	8 15/16	23 5/16	4	4	4	100	1
<b>OC-823G</b>	Y	Pool	Jandy Industries CS 150	8 15/16	23 5/16	4	4	4	150	1
<b>OC-828A</b>	Y	Pool	Hayward Star-Clear Plus C1900, open w/ molded gasket	8 15/16	28 3/16	4	4	4	190	1
<b>OC-828B</b>	Y	Pool	Hayward Star-Clear Plus C1750, Sta-Rite PXC-175, open w/molded gasket	8 15/16	28 3/16	4	4	4	175	1
<b>OC-828BM</b>	Y	Pool	Hayward Star-Clear Plus C1750, Sta-Rite PXC-175, open w/molded gasket (Antimicrobial)	8 15/16	28 3/16	4	4	4	175	1
<b>OC-828C</b>	Y	Pool	Waterway Proclear 125, 2006 and prior, Sta Rite Posi Clear PXC-125 open w/molded gasket	8 15/16	28 1/4	4	4	4	125	1
<b>OC-828D</b>	N	Pool	Sta-Rite Posi Clear PXC-150, Waterway	8 15/16	28 1/4	4	4	4	150	1
<b>OC-828DM</b>	N	Pool	Sta-Rite Posi Clear PXC-150, Waterway (Antimicrobial)	8 15/16	28 1/4	4	4	4	150	1
<b>OC-829A</b>	Y	Pool	Hayward X-Stream 200	8 15/16	29 7/16	4	4	4	200	1
<b>OC-833A</b>	Y	Pool	Jandy Industries CS 200	8 15/16	33 1/8	4	4	4	200	1
<b>OC-833AM</b>	Y	Pool	Jandy Industries CS 200 (Antimicrobial)	8 15/16	33 1/8	4	4	4	200	1
<b>OC-833C</b>	Y	Pool	Jandy Industries CS 250	8 15/16	33 1/8	4	4	4	250	1
<b>OC-823LM</b>	Y	Pool	Hayward X-Stream 175 (Antimicrobial)	8 15/16	23 1/4	4	4	4	175	1
<b>OC-823GM</b>	Y	Pool	Jandy Industries CS 150 (Antimicrobial)	8 15/16	23 5/16	4	4	4	150	1
<b>OC-833CM</b>	Y	Pool	Jandy Industries CS 250 (Antimicrobial)	8 15/16	33 1/8	4	4	4	250	1
<b>OC-817BM</b>	Y	Pool	Hayward Star-Clear II C800 Star-Clear II C1500, open w/molded gasket (Antimicrobial)	8 1/2	17 3/8	4	4	4	75	1
<b>OC-817B</b>	Y	Pool	Hayward Star-Clear II C800 Star-Clear II C1500, open w/molded gasket	8 1/2	17 3/8	4	4	4	75	1
<b>OC-823B</b>	Y	Pool	Hayward Star-Clear II C1100, open w/ molded gasket	8 1/2	23 5/16	4	4	4	100	1
<b>OC-823BM</b>	N	Pool	Hayward Star-Clear II C1100, open w/ molded gasket (Antimicrobial)	8 1/2	23 5/16	4	4	4	100	1
<b>OC-914A</b>	N	Pool	Hayward ASL Full Flo C850	9 1/4	14 3/16	3	3	4	85	1
<b>OC-914AM</b>	N	Pool	Hayward ASL Full Flo C850 (Antimicrobial)	9 1/4	14 3/16	3	3	4	85	1
<b>OC-919A</b>	Y	Pool	Hayward ASL Full-Flo C1250, C1500	9 1/4	19 5/8	3	3	4	125	1

OC PART #	Stock	Type	DESCRIPTION	OD INCHES	LENGTH INCHES	TOP HOLE INCHES	BOTTOM HOLE INCHES	MEDIA WEIGHT OZ / YD2	MEDIA SQ FT	CASE QTY
OC-J14A	Y	Pool	Jacuzzi Brothers Sherlock 80	10	14 5/8	Handle	6	4	80	1
OC-J20A	Y	Pool	Jacuzzi Brothers Sherlock 120	10	20 1/2	Handle	6	4	120	1
OC-J24A	N	Pool	Jacuzzi Brothers Sherlock 160	10	24 5/16	Handle	6	4	160	1
OC-J24AM	N	Pool	Jacuzzi Brothers Sherlock 160 (Antimicrobial)	10	24 5/16	Handle	6	4	160	1
OC-J30A	N	Pool	Jacuzzi Brothers Sherlock 200	10	30 3/16	Handle	6	4	200	1
OC-J19D	Y	Pool	Hayward C100S	10 1/16	19 1/2	4	4	4	150	1
OC-J19DM	Y	Pool	Hayward C100S (Antimicrobial)	10 1/16	19 1/2	4	4	4	150	1
OC-J23C	Y	Pool	Hayward C150S	10 1/16	23 1/8	4	4	4	200	1
OC-J23CM	Y	Pool	Hayward C150S (Antimicrobial)	10 1/16	23 1/8	4	4	4	200	1
OC-J28A	Y	Pool	Hayward C200S	10 1/16	28 3/16	4	4	4	200	1
OC-J28AM	Y	Pool	Hayward C200S (Antimicrobial)	10 1/16	28 3/16	4	4	4	200	1
OC-J16AM	Y	Pool	Predator 75 - Pentair Clean & Clear 75, Cal Spas (Antimicrobial)	10 1/8	16 1/8	6	6	4	75	1
OC-J23AM	Y	Pool	Predator 100 - Pentair Clean & Clear 100 (Antimicrobial)	10 1/8	23 5/8	6	6	4	100	1
OC-J31AM	Y	Pool	Predator 150 - Pentair Clean & Clear 150 (Antimicrobial)	10 1/8	31 1/8	6	6	4	150	1
OC-J31BM	Y	Pool	Predator 200 - Pentair Clean & Clear 200 (Antimicrobial)	10 1/8	31 1/8	6	6	4	200	1
OC-J08A	Y	Pool	Predator 50 - Pentair Clean & Clear 50	10 1/8	8 9/16	6	6	4	50	3
OC-J10A	Y	Pool	Jacuzzi CFR/CFT 50	10 1/8	10 1/16	5 15/16	6	4	50	2
OC-J13A	N	Pool	Waterway Pool 75, Leisure Bay WW-50	10 1/8	13 1/4	6	6	4	75	1
OC-J14B	N	Pool	Jacuzzi CFR/CFT 75	10 1/8	14 5/16	5 15/16	6	4	75	1
OC-J16A	Y	Pool	Predator 75 - Pentair Clean & Clear 75, Cal Spas	10 1/8	16 1/8	6	6	4	75	1
OC-J19C	N	Pool	Waterway Pool 100, Leisure Bay WW-100	10 1/8	19 1/4	6	6	4	100	1
OC-J19A	Y	Pool	Jacuzzi CFR/CFT 100	10 1/8	19 15/16	5 15/16	6	4	100	1
OC-J23D	N	Pool	Waterway Eco-Kleer 150	10 1/8	23.125	6	6	4	150	1
OC-J23E	Y	Pool	Waterway Eco-Kleer 200	10 1/8	23.125	6	6	4	200	1
OC-J23A	Y	Pool	Predator 100 - Pentair Clean & Clear 100	10 1/8	23 5/8	6	6	4	100	1
OC-J23B	Y	Pool	added fabric upgrade to Predator 100 - Pentair Clean & Clear 100	10 1/8	23 5/8	6	6	4	125	1
OC-J24C	N	Pool	Jacuzzi CFR/CFT 150	10 1/8	24 1/16	5 15/16	6	4	150	1
OC-J24D	N	Pool	Jacuzzi CFR/CFT-200	10 1/8	24 1/16	5 15/16	6	4	200	1
OC-J24DM	N	Pool	Jacuzzi CFR/CFT-200 (Antimicrobial)	10 1/8	24 1/16	5 15/16	6	4	200	1
OC-J25A	N	Pool	Waterway 200 Clearwater Cartridge	10 1/8	25 1/4	6	6	4	200	1
OC-J25B	Y	Pool	Waterway Pool 150, Leisure Bay WW-150	10 1/8	25 1/4	6	6	4	150	1
OC-J31A	Y	Pool	Predator 150 - Pentair Clean & Clear 150	10 1/8	31 1/8	6	6	4	150	1
OC-J31B	Y	Pool	Predator 200 - Pentair Clean & Clear 200	10 1/8	31 1/8	6	6	4	200	1
OC-J31C	Y	Pool	Upgrade to Predator 150	10 1/8	31 1/8	6	6	4	175	1



# Effortless Filter Cartridge Replacement Finding, Anytime.



## POWERFUL NEW ONLINE PRODUCT SEARCH ENGINE!

**We get it—choosing the perfect filter cartridge replacement from a sea of options can be overwhelming, especially when you're helping a customer. That's why we created the ONLINE OnCore Filter Finder — a lightning-fast search tool you can access anytime, anywhere, on any device. Simply search by ANY part number or dimensions, and instantly find the replacement cartridges that match the original pool or spa manufacturer. Save time, skip the hassle, and make your search effortless. Visit our website today!**



**OnCoreFiltration.com**



# SPA REPLACEMENT FILTERS

BY MEASUREMENT



# SPA | 2-4"

## BY MEASUREMENT

OC PART #	Stock	Type	DESCRIPTION	OD INCHES	LENGTH INCHES	TOP HOLE INCHES	BOTTOM HOLE INCHES	MEDIA WEIGHT OZ / YD2	MEDIA SQ FT	CASE QTY
OC-210A	Y	Spa	Spa Fill (Sediment) Cartridge	2 3/4	10	Closed	3/4" FGH	NA	NA	12
OC-404C	Y	Spa	Threaded Top Load Filter	4	4	Handle	1 1/2" SAE	3	15	12
OC-404B	Y	Spa	Waterway Skim Filter 10	4 1/4	4	2 1/16	2 1/16	3	10	18
OC-408D	Y	Spa	Dream Maker Spas	4 3/4	8 1/8	Handle	1 1/2" MPT	3	25	6
OC-408DM	N	Spa	Dream Maker Spas (Antimicrobial)	4 3/4	8 1/8	Handle	1 1/2" MPT	3	25	6
OC-405A	N	Spa	Saratoga Spas	4 5/8	5 15/16	Handle	1 1/2" MPT	3	14	6
OC-406C	Y	Spa	4 5/8 X 6 3/4, TSC, Top Load	4 5/8	6 3/4	Handle	1 1/2" MPT	3	25	6
OC-408N	N	Spa	Pageant Spa Top Load	4 5/8	8	Handle	1 1/2" MPT	3	18	6
OC-408P	Y	Spa	Futura Spa (Strong Industries)	4 5/8	8	Handle	1 1/2" SAE	3	20	6
OC-408Q	N	Spa	FILTER, 20SF 2" MPT	4 5/8	8 1/16	Handle	2" MPT	3	20	6
OC-409A	Y	Spa	After Hours Spas, Nemco Spas, Threaded 25, Top Load	4 5/8	9 3/4	Handle	1 1/2" MPT	3	25	6
OC-411N	Y	Spa	Saratoga Spas Circulation Pump	4 5/8	11 3/8	Handle	1 1/2" MPT	3	28	6
OC-411J	N	Spa	Advanced/LA Spas, Top Load	4 5/8	11 7/8	Handle	1 1/2" MPT	3	25	6
OC-414B	N	Spa	Advanced/LA Spas/ Nemco Spas	4 5/8	14 3/4	Handle	1 1/2" MPT	3	50	6
OC-415A	N	Spa	Hot Spring Spas (Watkins), Top Load	4 5/8	15	Handle	1 1/2" MPT	3	35	6
OC-415B	N	Spa	Saratoga Spas Top Load	4 5/8	15 1/4	Handle	1 1/2" MPT	3	40	6

# SPA | 5"

## BY MEASUREMENT

OC PART #	Stock	Type	DESCRIPTION	OD INCHES	LENGTH INCHES	TOP HOLE INCHES	BOTTOM HOLE INCHES	MEDIA WEIGHT OZ / YD2	MEDIA SQ FT	CASE QTY
OC-508E	N	Spa	FILTER WHT 25SQ NO INNER	5	8 1/2	Handle	1 1/2" FEMALE SAE	3	25	6
OC-510C	N	Spa	Jacuzzi Whirlpool 50, C/top, Front Load	5 11/16	10 3/8	Loop with String Handle	2 1/8	3	50	6
OC-510D	N	Spa	Jacuzzi Aero, Caressa, C/top	5 11/16	10 3/8	Loop with String Handle	2 1/8	3	23	6
OC-504A	N	Spa	Dynamic Series IV - Model DSF 35, Waterway	5	4 5/8	2 1/8	2 3/16	3	35	12
OC-506B	Y	Spa	Dynamic Series IV, Model DSF, DFML-25C, Waterway	5	6 5/8	2 1/8	2 1/8	3	50	12
OC-506C	N	Spa	Freeflow Lagas, TLX, RLX	5	6 5/8	Closed	1 1/2" MPT	3	25	6
OC-506D	N	Spa	Freeflow Lagas, CLX	5	6 5/8	2 1/8	1 1/2" MPT	3	25	6
OC-509D	Y	Spa	Dynamic Series IV - DFM, DFML, Waterway 35, In-Line	5	9 1/4	2 1/8	2 1/8	3	35	6
OC-509DM	Y	Spa	Dynamic Series IV - DFM, DFML, Waterway 35, In-Line (Antimicrobial)	5	9 1/4	2 1/8	2 1/8	3	35	6
OC-509N	Y	Spa	Waterway Teleweir 35	5	9 1/4	Handle	1 1/2" FEMALE SAE	3	35	6
OC-509NM	N	Spa	Waterway Teleweir 35 (Antimicrobial)	5	9 1/4	Handle	1 1/2" FEMALE SAE	3	35	6

OC PART #	Stock	Type	DESCRIPTION	OD INCHES	LENGTH INCHES	TOP HOLE INCHES	BOTTOM HOLE INCHES	MEDIA WEIGHT OZ / YD2	MEDIA SQ FT	CASE QTY
OC-510J	N	Spa	Santana 25, Open Top	5	10 1/16	2 1/8	2 1/8	3	25	6
OC-511H	N	Spa	Waterway 40, In-Line	5	11 5/16	2 1/8	2 1/8	3	40	6
OC-513P	Y	Spa	Waterway Teleweir 50	5	13 3/16	Handle	1 1/2" FEMALE SAE	3	50	6
OC-513PM	N	Spa	Waterway Teleweir 50 (Antimicrobial)	5	13 3/16	Handle	1 1/2" FEMALE SAE	3	50	6
OC-513B	Y	Spa	Jacuzzi CFR/CFT 25	5	13 5/16	2 3/8	2 3/8	4	25	6
OC-513C	N	Spa	Jacuzzi CFR/CFT 37	5	13 5/16	2 3/8	2 3/8	4	37	6
OC-513D	N	Spa	Jacuzzi CFR/CFT 15	5	13 5/16	2 3/8	2 3/8	4	15	6
OC-513E	Y	Spa	Dynamic Series II & III - RTL/RCF, Series I - Model RDC, Series IV - DFM, DFML, Waterway	5	13 5/16	2 1/8	2 1/8	4	25	6
OC-513G	Y	Spa	Dynamic Series I RDC-25, I RDC-25S, Dynamic Series II & II RTL/RCF-25, Dynamic Series IV-DFM, DFML, Waterway 25 In-Line, Custom Molded Products	5	13 5/16	2 1/8	2 1/8	3	25	6
OC-513GM	Y	Spa	Dynamic Series I RDC-25, I RDC-25S, Dynamic Series II & II RTL/RCF-25, Dynamic Series IV-DFM, DFML, Waterway 25 In-Line, Custom Molded Products (Antimicrobial)	5	13 5/16	2 1/8	2 1/8	3	25	6
OC-513J	N	Spa	Dynamic Series I RDC-25, I RDC-25S, Series IV - DFM, DFML, Series II & KKK RTL/RCF-25, Waterway, Morgan Spas, Leisure Bay Spas, Custom Molded Products	5	13 5/16	2 1/8	2 1/8	3	37	6
OC-513K	Y	Spa	Dynamic Series IV - DFM, DFML, Series II & III RTL/RCF-50, Series I RDC-50, RDC-50S, Waterway, Custom Molded Products	5	13 5/16	2 1/8	2 1/8	3	50	6
OC-513KM	Y	Spa	Dynamic Series IV - DFM, DFML, Series II & III RTL/RCF-50, Series I RDC-50, RDC-50S, Waterway, Custom Molded Products (Antimicrobial)	5	13 5/16	2 1/8	2 1/8	3	50	6
OC-514C	N	Spa	Sonfarrel 50-220152, Cal Spas, Martec, Advantage Mfg.	5	14 7/8	2 1/8	2 1/8	3	50	6
OC-514D	N	Spa	Sonfarrel 45	5	14 7/8	2 1/8	2 1/8	3	45	6
OC-517A	N	Spa	Advantage Electric 50	5	17 3/8	2 1/8	2 1/8	3	50	5
OC-517D	N	Spa	Santana 45	5	17 5/8	2 1/8	2 1/8	3	45	6
OC-520A	Y	Spa	Dynamic Series V-DSC-75, Series II & III RTL/RCF-75, Custom Molded Products	5	20 1/8	2 1/8	2 1/8	3	75	6
OC-520AM	Y	Spa	Dynamic Series V-DSC-75, Series II & III RTL/RCF-75, Custom Molded Products (Antimicrobial)	5	20 1/8	2 1/8	2 1/8	3	75	6
OC-523A	N	Spa	Waterway In-Line 75	5	23 5/8	2 1/8	2 1/8	3	75	6
OC-523B	N	Spa	Waterway 100, Cal Spas	5	23 5/8	2 1/8	2 1/8	3	100	6
OC-526A	N	Spa	Dynamic Series II & III RTL/RCF-100, Series V-DSC-100	5	26 1/2	2 1/8	2 1/8	3	100	4
OC-509A	Y	Spa	Freeflow 2013 - current	5 1/4	9 3/8	Closed - String Handle	1 1/2" MPT	3	42	6
OC-509AM	N	Spa	Freeflow 2013 - current (Antimicrobial)	5 1/4	9 3/8	Closed - String Handle	1 1/2" MPT	3	42	6
OC-510L	Y	Spa	Jacuzzi Hermosa, Redondo, Del Sol Spas	5 3/16	10 5/8	Handle	2" MPT	3	40	6
OC-512C	Y	Spa	Pacific Marquis Spas	5 3/16	12 1/4	Handle	2" MPT	3	50	6



OC PART #	Stock	Type	DESCRIPTION	OD INCHES	LENGTH INCHES	TOP HOLE INCHES	BOTTOM HOLE INCHES	MEDIA WEIGHT OZ / YD2	MEDIA SQ FT	CASE QTY
OC-512CM	N	Spa	Pacific Marquis Spas (Antimicrobial)	5 3/16	12 1/4	Handle	2" MPT	3	50	6
OC-512E	Y	Spa	Pacific Marquis Spas	5 3/16	12 1/4	Handle	2" MPT	3	35	6
OC-512EM	N	Spa	Pacific Marquis Spas (Antimicrobial)	5 3/16	12 1/4	Handle	2" MPT	3	35	6
OC-516A	N	Spa	Cal Spa Victory 60	5 3/16	16	Handle	2" MPT	3	60	6
OC-516AM	Y	Spa	Cal Spa Victory 60 (Antimicrobial)	5 3/16	16	Handle	2" MPT	3	60	6
OC-508A	Y	Spa	LA Spas replacement for bag filter	5 3/8	8 9/16	Handle	3" MPT	3	35	6
OC-508AM	N	Spa	LA Spas replacement for bag filter (Antimicrobial)	5 3/8	8 9/16	Handle	3" MPT	3	35	6
OC-521A	N	Spa	Coast Spas Top load (in-line) 100, Waterway Plastics	5 3/8	21 5/16	2 1/8	2 1/8	3	80	4
OC-530A	N	Spa	Coast Spas Top load (in-line) 135, Waterway Plastics	5 3/8	30 1/8	2 1/8	2 1/8	3	120	4
OC-510A	N	Spa	Freeflow Spas Legend	5 5/16	10	2 1/8	1 1/2" MPT	3	50	6
OC-510E	N	Spa	Leisure Bay, Dynasty Spas, Waterway, Rainbow	5 5/16	10 1/8	2 1/8	2 1/8	3	50	6
OC-510EM	N	Spa	Leisure Bay, Dynasty Spas, Waterway, Rainbow (Antimicrobial)	5 5/16	10 1/8	2 1/8	2 1/8	3	50	6
OC-514A	Y	Spa	Rainbow, Waterway, Leisure Bay, S2/G2 Spa 75	5 5/16	14 3/4	2 1/8	2 1/8	3	75	4
OC-514AM	Y	Spa	Rainbow, Waterway, Leisure Bay, S2/G2 Spa 75 (Antimicrobial)	5 5/16	14 3/4	2 1/8	2 1/8	3	75	4
OC-517C	N	Spa	Rainbow, Waterway, Leisure Bay, S2/G2 Spa 100	5 5/16	17 3/4	2 1/8	2 1/8	3	100	4
OC-508F	Y	Spa	Maax Spas of Canada, 25 SF, 1 1/2" MPT THREAD	5 5/8	8	Handle	1 1/2" MPT	3	25	6
OC-508B	Y	Spa	Maax Spas of Canada, 50 SF, 1 1/2" MPT THREAD	5 5/8	8	Handle	1 1/2" MPT	3	50	6
OC-508BM	N	Spa	Maax Spas of Canada, 50 SF, 1 1/2" MPT THREAD (Antimicrobial)	5 5/8	8	Handle	1 1/2" MPT	3	50	6
OC-508C	N	Spa	Maax Spas of Canada, 25 SF, 1 1/2" MPT THREAD	5 5/8	8	Handle	1 1/2" MPT	3	25	6
OC-508D	N	Spa	Maax Spas of Canada, 50 SF, 1 1/2" ACME THREAD	5 5/8	8	Handle	1 1/2" SAE	3	50	6
OC-510K	Y	Spa	Watkins Hot Spring Spas	5 7/8	10 3/8	1 15/16	1 15/16	3	30	6

# SPA | 6"

## BY MEASUREMENT

OC PART #	Stock	Type	DESCRIPTION	OD INCHES	LENGTH INCHES	TOP HOLE INCHES	BOTTOM HOLE INCHES	MEDIA WEIGHT OZ / YD2	MEDIA SQ FT	CASE QTY
OC-605A	N	Spa	Softub; Leisure Bay; 6 x 5 1/2, TSC	6	5 1/2	Handle	1 1/2" MPT	3	20	6
OC-606A	N	Spa	American Spas; Artesian (Coleman)	6	6 1/2	Handle	1 1/2" MPT	3	25	6
OC-607B	Y	Spa	New Artesian 6" D Spa	6	7 5/8	Handle	2" MPT	3	40	6
OC-607BM	N	Spa	New Artesian 6" D Spa (Antimicrobial)	6	7 5/8	Handle	2" MPT	3	40	6
OC-607D	Y	Spa	Waterway Front Access Skimmer (2 required)	6	7 5/8	Handle	1 1/2" SAE	3	50	6
OC-607DM	N	Spa	Waterway Front Access Skimmer, Aber Hot Tubs, (Antimicrobial)	6	7 5/8	Handle	1 1/2" SAE	3	38	6
OC-607C	Y	Spa	Top Load, Sunrise Modification	6	7 7/8	Handle	1 1/2" MPT	3	50	6
OC-608E	Y	Spa	Advanced/LA Spas; Aber Hottub	6	8 3/4	Handle	1 1/2" MPT	3	47	6
OC-609D	Y	Spa	Master Spas Twilight	6	9 1/4	Handle	2" MPT	3	40	6
OC-609DM	N	Spa	Master Spas Twilight (Antimicrobial)	6	9 1/4	Handle	2" MPT	3	40	6
OC-609B	N	Spa	Four Seasons Spa	6	9 3/4	Handle	1 1/2" MPT	3	25	6
OC-609A	N	Spa	DFA Spas; Arizona Pacific	6	9 13/16	Handle	1 1/2" MPT	3	35	4
OC-611A	N	Spa	Master Spas; Freedom Spas	6	11 15/16	Handle	1 1/2" MPT	3	45	4
OC-613A	N	Spa	Advanced/LA Spas	6	13 3/16	Handle	1 1/2" MPT	3	50	4
OC-613B	N	Spa	Seven Seas Spas	6	13 3/8	Handle	1 1/2" MPT	3	40	3
OC-614A	N	Spa	Caribbean/Catalina; Jetta Spas; Wild Water Spa	6	14 13/16	Handle	1 1/2" MPT	3	60	2
OC-614B	N	Spa	Advanced Spa 75	6	14 13/16	Handle	1 1/2" MPT	3	50	3
OC-608A	Y	Spa	Master Spas outer cartridge for PMA-PROPAK2-M (Antimicrobial)	6 1/2	8	4 1/16	4 1/16	3	25	4
OC-608AM	N	Spa	Master Spas outer cartridge for PMA-PROPAK2-M (Antimicrobial)	6 1/2	8	4 1/16	4 1/16	3	25	4
OC-707E	Y	Spa	Artesian Spas 50	6 3/4	7 7/8	Handle	2" MPT	3	50	4
OC-607A	Y	Spa	Artesian Spas 50	6 3/4	7 7/8	Handle	2" MPT	3	50	4
OC-614C	Y	Spa	Watkins Hot Spring Spas	6 3/8	14	1 15/16	1 15/16	3	35	4
OC-614D	Y	Spa	Watkins Hot Spring Spas	6 3/8	14	1 15/16	1 15/16	3	70	4
OC-615A	Y	Spa	Jacuzzi Premium J-300, J400 (injection molded handle not included)	6 5/8	15 1/2	Open Top	2" SAE	3	60	2
OC-615B	Y	Spa	Jacuzzi Premium J-300, J400	6 5/8	15 1/2	Handle	2" SAE	3	60	2

# SPA | 7"

## BY MEASUREMENT

OC PART #	Stock	Type	DESCRIPTION	OD INCHES	LENGTH INCHES	TOP HOLE INCHES	BOTTOM HOLE INCHES	MEDIA WEIGHT OZ / YD2	MEDIA SQ FT	CASE QTY
OC-707D	N	Spa	Sunrise	7	7 7/8	Handle	1 1/2" MPT	3	50	4
OC-709H	N	Spa	40SF Vita Spa, Coleman, Top Load	7	9 7/8	Handle	1 1/2" MPT	3	40	4
OC-710A	N	Spa	Caldera 50	7	10 3/4	Swivel Handle	2" Male Slip	3	50	2
OC-710B	N	Spa	Caldera 50 (new style)	7	10 3/4	Swivel Handle	2 11/16	3	50	2
OC-710BM	N	Spa	Caldera 50 (new style)(Antimicrobial)	7	10 3/4	Swivel Handle	2 11/16	3	50	2

# SPA | 7"

## BY MEASUREMENT

OC PART #	Stock	Type	DESCRIPTION	OD INCHES	LENGTH INCHES	TOP HOLE INCHES	BOTTOM HOLE INCHES	MEDIA WEIGHT OZ / YD2	MEDIA SQ FT	CASE QTY
OC-714C	N	Spa	Caldera 75	7	14 5/8	Swivel Handle	2" Male Slip	3	75	2
OC-714X	N	Spa	Coleman, Vita Spa 7x14 3/4, TSC	7	14 13/16	Handle	1 1/2" MPT	3	50	2
OC-714D	N	Spa	Caldera 75 (new style)	7	14 7/8	Swivel Handle	2 11/16	3	75	2
OC-709J	N	Spa	Waterco C-25	7 1/4	9 7/8	3	3	3	25	4
OC-710D	Y	Spa	Dimension One 75, @Home Hot Tubs (open w/ twist lock)	7 1/4	10 1/4	Castle Top	Special Lock Bottom	3	75	4
OC-714A	N	Spa	Advantage Electric 75	7 1/4	14 5/8	2 15/16	2 15/16	3	75	2
OC-721B	Y	Spa	Advantage Electric 100	7 1/4	21 1/2	3	3	3	100	2
OC-728A	N	Spa	Advantage Electric 150	7 1/4	28 9/16	3	3	3	150	2
OC-707B	N	Spa	Master Spas Legacy / Freedom	7 1/8	7 3/16	Handle	2" MPT	3	40	4
OC-707A	N	Spa	Artesian Top Load Spa (Coleman)	7 1/8	7 9/16	Handle	2" MPT	3	35	3
OC-707AM	N	Spa	Artesian Top Load Spa (Coleman)(Antimicrobial)	7 1/8	7 9/16	Handle	2" MPT	3	35	3
OC-705A	Y	Spa	Sundance Microclean Depth Filter	7 3/4	5	4 3/4	4 3/4	NA	NA	12

# SPA | 8"

## BY MEASUREMENT

OC PART #	Stock	Type	DESCRIPTION	OD INCHES	LENGTH INCHES	TOP HOLE INCHES	BOTTOM HOLE INCHES	MEDIA WEIGHT OZ / YD2	MEDIA SQ FT	CASE QTY
OC-805A	Y	Spa	Bullfrog 35, 2003-2012 (short thread)	8	5 3/4	Handle	2" modified ACME	3	35	4
OC-805AM	Y	Spa	Bullfrog 35, 2003-2012 (short thread) (Antimicrobial)	8	5 3/4	Handle	2" modified ACME	3	35	4
OC-805B	Y	Spa	Bullfrog 35, 2003-2012 (long thread)	8	5 3/4	Handle	2" modified ACME	3	35	4
OC-806A	Y	Spa	Master Spas EP (new style)	8	6 7/8	4 1/16	4 1/16	3	45	4
OC-806AM	N	Spa	Master Spas EP (new style) (Antimicrobial)	8	6 7/8	4 1/16	4 1/16	3	45	4
OC-809A	N	Spa	Coleman Spas 50	8	9	2 1/8	2" Slip	3	50	2
OC-809B	N	Spa	Master Spas, Top Load Cartridge	8	9 1/4	Handle	2" MPT	3	70	2
OC-813A	Y	Spa	Coleman Spas 75	8	13 1/16	2 1/8	2" Slip	3	75	2
OC-815B	N	Spa	Sundance Spas 95	8	15 1/2	Handle	2" MPT	3	95	2
OC-816A	N	Spa	Caldera 100	8	16 1/2	Handle	3 5/8	3	100	2
OC-807A	N	Spa	Vita Spa AB5-300 (Antimicrobial)	8 1/2	7 1/4	Handle	2" MPT	3	30	4
OC-807AM	N	Spa	Vita Spa AB5-300 (Antimicrobial)	8 1/2	7 1/4	Handle	2" MPT	3	30	4
OC-810C	Y	Spa	Watkins Hot Spring Spas upgrade from PW-K45N	8 1/2	10 1/2	3	3	3	65	2
OC-814A	Y	Spa	Sundance Microclean	8 1/2	14 5/8	2" SAE (Closed)	2 3/4" beveled edge	3	85	1
OC-819D	N	Spa	Sundance Double End 120	8 1/2	19	2 3/16 Slip	2 3/4" beveled edge	3	125	1





# POOL REPLACEMENT FILTERS

BY OEM (MANUFACTURER)



# POOL | 4"

BY OEM | CROSS REFERENCE

OC PART #	Stock	DESCRIPTION	OD INCHES	LENGTH INCHES	TOP HOLE INCHES	BOTTOM HOLE INCHES	OEM PART #	PLEATCO	UNICEL	FILBUR
OC-411D	N	Hayward C-120, MicroStar-Clear (in-line)	4 5/8	11 7/8	2 1/16	2 1/16	CX120-RE	PA12	C-4312	FC-1210
OC-411E	N	Hayward C-200, MicroStar-Clear, American Commander II	4 5/8	11 7/8	2 1/16	2 1/16	CX200-RE	PA20	C-4320	FC-1215
OC-411F	Y	Hayward MicroStar-Clear C225, American Commander II	4 5/8	11 7/8	2 1/16	2 1/16	CX225-RE	PA225	C-4325	FC-1220

# POOL | 7"

BY OEM | CROSS REFERENCE

OC PART #	Stock	DESCRIPTION	OD INCHES	LENGTH INCHES	TOP HOLE INCHES	BOTTOM HOLE INCHES	OEM PART #	PLEATCO	UNICEL	FILBUR
OC-709E	Y	Hayward, Star-Clear C250, open w/ molded gasket	7	9 11/16	3	3	CX250-RE	PA25	C-7626	FC-1230
OC-711D	N	Pentair Purex CF 40, CFW Filter CF-40/120, CFM Filter CF-40/120, (3 required)	7	11 1/8	2 15/16	2 15/16	07-0658, R173310	PPF40	C-7440	FC-2130
OC-714T	Y	Pentair Clean & Clear Plus 240, American Quantum, (4 required)	7	14 1/8	3	3	178569, R173572	PCC60	C-7469	FC-1975
OC-714G	N	Hayward SwimClear C2025	7	14 3/16	3	3	CX480-XRE	PA56SV	C-7458	FC-1223
OC-714H	Y	Hayward Easy Clear C400, C-410, open w/molded gasket	7	14 3/16	3	3	CX410-RE	PA40	C-7442	FC-1228
OC-714HM	N	Hayward Easy Clear C400, C-410, open w/molded gasket (Antimicrobial)	7	14 3/16	3	3	CX410-RE	PA40	C-7442	FC-1228
OC-714K	N	Hayward, Super-Star-Clear C2000, SwimClear C2020, Sta-Rite PRC 50, open w/molded gasket	7	14 3/16	3	3	CX470-XRE, 25200-01505	PA50SV	C-7447	FC-1235
OC-716B	N	Pentair Purex CFW Filter CFW-67.5/405, (6 required), (Tango Pools)	7	16	2 15/16	2 15/16	07-4930, R173314	PPF67.5	C-7467	FC-2170
OC-718B	N	Pentair / Pac Fab Seahorse 75; 300, (4 required) ( Stainless Steel Tank) Sea Horse FSH-300 (Fiberglass Tank)	7	18 7/16	2 5/8	2 5/8	1722840, 172877, R173316	PFAB75	C-7491	FC-2190
OC-719U	N	Hayward C7030, HCF7030, HCF7030C	7	19 1/8	3	3	CX591-XRE	PA89	C-7485	
OC-719Q	N	Sta-Rite Posi-clean FCP50, TXC50, TXC50B, FCP50B, FCP100, TXC 100	7	19 7/16	3	3	2420-0016, 24241-0016, WC108-141SI	PPC50	C-7652	FC-2580
OC-719P	N	Pentair Purex CF 60 CF-60/180 (3 required)	7	19 5/8	2 15/16	2 15/16	07-0657, R173312	PPF60	C-7460	FC-2150
OC-719D	Y	Hayward SwimClear C3025, C3030, open w/molded gasket	7	19 5/8	3	3	CX580-XRE	PA81	C-7483	FC-1225
OC-719E	Y	Hayward Star-Clear C500, Pentair Purex CF-50, open/w molded gasket	7	19 5/8	3	3	CX500-RE, R173409, 27-079	PA50	C-7656	FC-1240
OC-719F	Y	Hayward Easy Clear C550, open w/ molded gasket	7	19 5/8	3	3	CX550-RE	PA55	C-7455	FC-1245
OC-719G	Y	Hayward C-570, SwimClear C3020, Super-Star-Clear C3000, C3000S (stainless steel) Sta-Rite PRC 75, open w/molded gasket	7	19 5/8	3	3	CX570-XRE, 25200-01755	PA75SV	C-7477	FC-1260

OC PART #	Stock	DESCRIPTION	OD INCHES	LENGTH INCHES	TOP HOLE INCHES	BOTTOM HOLE INCHES	OEM PART #	PLEATCO	UNICEL	FILBUR
OC-720B	Y	Pentair Clean & Clear Plus 320, (4 required)	7	20 1/16	3	3	817-0081, 178580, R173573	PCC80	C-7470	FC-1976
OC-724A	N	Pentair / Pac Fab Seahorse 400 Stainless/Fiberglass Tank	7	24 7/16	2 5/8	2 5/8	1722841, R173316	PFAB100SH	C-7492	FC-2192
OC-725F	N	Poolco120	7	25 1/5	3	3		PPCO120		FC-3121
OC-725A	Y	Hayward SwimClear C-4025, C-4030, open w/molded gasket	7	25 1/2	3	3	CX880-XRE	PA106	C-7488	FC-1226
OC-725B	Y	Hayward Super-Star-Clear C4000, SwimClear C4020, Super-Star-Clear C4000S (stainless steel), open w/ molded gasket	7	25 1/2	3	3	CX870-XRE	PA100N	C-7487	FC-1270
OC-725BM	Y	Hayward Super-Star-Clear C4000, SwimClear C4020, Super-Star-Clear C4000S (stainless steel), open w/molded gasket (Antimicrobial)	7	25 1/2	3	3	CX870-XRE	PA100N-M	C-7487AM	FC-1270M
OC-725C	Y	Hayward Super-Star-Clear C-4500, SwimClear C-4520, Pentair Purex CF 105, open w/molded gasket	7	25 1/2	3	3	CX875-RE	PA112	C-7489	FC-1275
OC-725CM	N	Hayward Super-Star-Clear C-4500, SwimClear C-4520, Pentair Purex CF 105, open w/molded gasket (Antimicrobial)	7	25 1/2	3	3	CX875-RE	PA112-M	C-7489AM	FC-1275M
OC-725E	N	Pentair Purex CF 105 CF-105/315 (3 required)	7	25 5/8	2 15/16	2 15/16	07-0231, R173315	PPF105	C-7496	FC-2180
OC-726E	Y	Pentair Pentair Clean & Clear Plus 520 (pre 1998) / American Quantum, CM, RPM, 125/500	7	26	3	3		PCC125	C-7498	FC-0695
OC-726F	Y	Pentair Clean & Clear Plus 420, Waterway Crystal Water	7	26	3	3	817-0106, 178584, R173476	PCC105	C-7471	FC-1977
OC-726FM	Y	Pentair Clean & Clear Plus 420, Waterway Crystal Water (Antimicrobial)	7	26	3	3	817-0106, 178584, R173476	PCC105-M	C-7471AM	FC-1977M
OC-729J	N	Sta-Rite Posi-clean TXC75, FCP75	7	29	3	3	24240-0016, 24241-0016	PPC75	C-7677	FC-2590
OC-729D	Y	Hayward Star-Clear C750, open w/ molded gasket	7	29 3/8	3	3	CX750-RE, R173205, 570074	PA75	C-7676	FC-1250
OC-729DM	N	Hayward Star-Clear C750, open w/ molded gasket (Antimicrobial)	7	29 3/8	3	3	CX750-RE, R173205, 570074	PA75-M	C-7676AM	FC-1250M
OC-730A	N	Pentair / Pac Fab Seahorse 500 (Stainless Steel Tank), Sea Horse FSH-500 (Fiberglass Tank), (4 required)	7	30 7/16	2 5/8	2 5/8	1722849, 172887, R173318	PFAB125	C-7493	FC-2194
OC-732F	Y	Pentair Clean & Clear Plus 520	7	32	3	3	817-0131, 178585, R173578	PCC130	C-7472	FC-1978
OC-732FM	Y	Pentair Clean & Clear Plus 520 (Antimicrobial)	7	32	3	3	817-0131, 178585, R173578	PCC130-M	C-7472AM	FC-1978M
OC-732G	N	Poolco150	7	32 1/4	3	3		PPCO150		FC-3119
OC-732A	Y	Hayward SwimClear C5025, C5030, open w/molded gasket	7	32 3/4	3	3	CX1280-XRE	PA131	C-7494	FC-1227



OC PART #	Stock	DESCRIPTION	OD INCHES	LENGTH INCHES	TOP HOLE INCHES	BOTTOM HOLE INCHES	OEM PART #	PLEATCO	UNICEL	FILBUR
OC-732B	Y	Hayward Super-Star-Clear C5000 SwimClear C5020, open w/molded gasket	7	32 3/4	3	3	CX1260-RE	PA126	C-7495	FC-1296
OC-732C	Y	Hayward Super-Star-Clear C5500 SwimClear C5520, open w/molded gasket	7	32 3/4	3	3	CX1380-RE	PA137	C-7490	FC-1297
OC-732CM	N	Hayward Super-Star-Clear C5500 SwimClear C5520, open w/molded gasket (Antimicrobial)	7	32 3/4	3	3	CX1380-RE	PA137	C-7490	FC-1297
OC-714TM	Y	Pentair Clean & Clear Plus 240, American Quantum, (4 required) (Antimicrobial)	7	14 1/8	3	3	178569, R173572	PCC60	C-7469	FC-1975
OC-719DM	Y	Hayward SwimClear C3025, C3030, open w/molded gasket (Antimicrobial)	7	19 5/8	3	3	CX580-XRE	PA81	C-7483	FC-1225
OC-720BM	Y	Pentair Clean & Clear Plus 320, (4 required) (Antimicrobial)	7	20 1/16	3	3	817-0081, 178580, R173573	PCC80	C-7470	FC-1976
OC-725AM	Y	Hayward SwimClear C-4025, C-4030, open w/molded gasket (Antimicrobial)	7	25 1/2	3	3	CX880-XRE	PA106	C-7488	FC-1226
OC-726B	Y	Jandy Industries CL340, CV340	7 1/8	26 15/16	3	3	A0557900	PJAN85	C-7459	FC-0800
OC-726C	Y	Jandy Industries CL460, CV460	7 1/8	26 15/16	3	3	A0558000	PJAN115	C-7468	FC-0810
OC-726CM	N	Jandy Industries CL460, CV460 (Anti-microbial)	7 1/8	26 15/16	3	3	A0558000	PJAN115-M	C-7468AM	FC-0810M
OC-732E	Y	Jandy Industries CL580, CV580	7 1/8	32 7/8	3	3	A0104100	PJAN145	C-7482	FC-0820
OC-714L	N	Jandy Industries CT-50 (open w/step), Waterco Trimline CC-50 (open w/step)	7 1/4	14 5/8	3 1/16	3 1/16	A0103600, 62048	PJAN50	C-7448	FC-5155
OC-719H	N	Jandy Industries CT-75 (open w/step), Waterco Trimline C-75 (open w/step)	7 1/4	19 1/2	3 1/16	3 1/16	A0103500, 62049	PJAN75	C-7473	FC-5177
OC-719T	N	Waterco C-50	7 1/4	19 11/16	3	3	62024	PWC50	C-7457	FC-5150
OC-729E	N	Jandy Industries CT-100, Waterco Trimline CC-100	7 1/4	29 3/8	3 1/16	3 1/16	A0103400, 62050	PJAN100	C-7497	FC-5180
OC-711C	N	Pentair / Pac Fab Mytilus FMY 50	7 7/8	11 1/8	3 1/16	3 1/16	17-4981, R173297	PFAB50	C-7678	FC-1920
OC-714U	N	Pentair / Pac Fab Mytilus-B 60 GPM MY 60, Mitra 60 GPM MA-60/160, Mytilus 60 60 GPM MY 60, Mytilus-B 140 GPM MY 140 (2 required), Wet Institute Modufilter M-180 (3 required)	7 7/8	14 1/16	3 1/16	3 1/16	17-2810, 17-4983, 17-4985, 32050203, R173298	PFAB60	C-7660	FC-1930
OC-722C	N	Pentair / Pac Fab Mytilus 80 80 GPM MY 80, Mitra 80 GPM MA-80, Mytilus-B 80 GPM MY 80, Mytilus FMY 80	7 7/8	22 1/8	3 1/16	3 1/16	17-2811, 17-4984, R173299	PFAB80	C-7680	FC-1940
OC-722D	N	Pentair / Pac Fab Mytilus B 100 GPM MA-100/160, Mitlus FMY 100, Mytilus 100 GPM MY 100, Mitra 100 GPM MA-100-160, Wet Institute Modufilter M-330 (3 required)	7 7/8	22 1/8	3 1/16	3 1/16	17-2812, 17-4985, 32050204	PFAB100	C-7699	FC-1950
OC-733A	N	Pentair / Pac Fab My 150, GPM Pac-Fab, Mytilus FMY150	7 7/8	33 3/8	3 1/16	3 1/16	17-4980	PFAB150	C-7679	FC-1960

OC PART #	Stock	DESCRIPTION	OD INCHES	LENGTH INCHES	TOP HOLE INCHES	BOTTOM HOLE INCHES	OEM PART #	PLEATCO	UNICEL	FILBUR
OC-817B	Y	Hayward Star-Clear II C800 Star-Clear II C1500, open w/molded gasket	8 1/2	17 3/8	4	4	CX800-RE	PA80	C-8600	FC-1280
OC-823B	Y	Hayward Star-Clear II C1100, open w/molded gasket	8 1/2	23 5/16	4	4	CX1100-RE	PA100	C-8610	FC-1290
OC-823BM	N	Hayward Star-Clear II C1100, open w/molded gasket (Antimicrobial)	8 1/2	23 5/16	4	4	CX1100-RE	PA100-M	C-8610AM	FC-1290M
OC-817BM	Y	Hayward Star-Clear II C800 Star-Clear II C1500, open w/molded gasket (Antimicrobial)	8 1/2	17 3/8	4	4	CX800-RE	PA80	C-8600	FC-1280
OC-817A	N	Hayward C751, Sta-Rite PXC-75 open w/molded gasket	8 15/16	17 3/8	4	4	CX760-RE, 25230-0075S	PA76	C-8411	FC-1256
OC-817C	Y	Hayward X-Stream CC100, open w/molded gasket	8 15/16	17 3/8	4	4	CCX1000-RE, 817-0100N/P	PXST100	C-8311	FC-1285
OC-817CM	Y	Hayward X-Stream CC100, open w/molded gasket (Antimicrobial)	8 15/16	17 3/8	4	4	CCX1000-RE, 817-0100N/P	PXST100-M	C-8311AM	FC-1285M
OC-817D	Y	Hayward Star-Clear Plus C900, Sta-Rite PXC-95 open w/molded gasket	8 15/16	17 3/8	4	4	CX900-RE, 25230-0095S	PA90	C-8409	FC-1292
OC-817DM	Y	Hayward Star-Clear Plus C900, Sta-Rite PXC-95 open w/molded gasket (Antimicrobial)	8 15/16	17 3/8	4	4	CX900-RE, 25230-0095S	PA90-M	C-8409AM	FC-1292M
OC-817F	Y	Waterway Clearwater II Pro-Clean 75 above ground pool cartridge 817-0075N	8 15/16	17 3/8	4	4	817-0075N, 817-0075P	PWWCT75		FC-1255
OC-817G	N	upgrade to Hayward X-Stream CC100, open w/molded gasket	8 15/16	17 3/8	4	4		PXST125		
OC-823A	Y	Hayward X-Stream CC150	8 15/16	23 1/4	4	4	CCX1500-RE, 817-0150P, MX1500-RE	PXST150	C-8316	FC-1286
OC-823AM	Y	Hayward X-Stream CC150 (Antimicrobial)	8 15/16	23 1/4	4	4	CCX1500-RE, 817-0150P, MX1500-RE	PXST150-M	C-8316AM	FC-1286M
OC-823C	Y	Hayward Star-Clear Plus C1200	8 15/16	23 1/4	4	4	CX1200-RE	PA120	C-8412	FC-1293
OC-823CM	Y	Hayward Star-Clear Plus C1200 (Antimicrobial)	8 15/16	23 1/4	4	4	CX1200-RE	PA120-M	C-8412AM	FC-1293M
OC-823H	Y	Waterway Clearwater II, Pro-Clean 150 above ground pool cartridge	8 15/16	23 1/4	4	4	817-0150N, 817-0150P	PWWCT150		FC-1287
OC-823HM	Y	Waterway Teleweir 50 (Antimicrobial)	8 15/16	23 1/4	4	4	817-0150N, 817-0150P	PWWCT150		FC-1287
OC-823K	Y	Waterway Clearwater II 200 ctdge, p/n 817-0200N	8 15/16	23 1/4	4	4	817-0200N	PWWCT200	C-8419	FC-1288
OC-823L	N	Hayward X-Stream 175	8 15/16	23 1/4	4	4	CCX1750RE, 817-0150N	PXST175	C-8317	FC-1273
OC-823E	Y	Jandy Industries CS 100	8 15/16	23 5/16	4	4	R0462200	PJANCS100	C-8410	FC-0821
OC-823EM	Y	Jandy Industries CS 100 (Antimicrobial)	8 15/16	23 5/16	4	4	R0462200	PJANCS100-M	C-8410AM	FC-0821M
OC-823G	Y	Jandy Industries CS 150	8 15/16	23 5/16	4	4	R0462300	PJANCS150	C-8414	FC-0822
OC-828A	Y	Hayward Star-Clear Plus C1900, open w/molded gasket	8 15/16	28 3/16	4	4	CX1900-RE, 817-0200P	PA190		FC-1211

# POOL | 8"

BY OEM | CROSS REFERENCE

OC PART #	Stock	DESCRIPTION	OD INCHES	LENGTH INCHES	TOP HOLE INCHES	BOTTOM HOLE INCHES	OEM PART #	PLEATCO	UNICEL	FILBUR
OC-828B	Y	Hayward Star-Clear Plus C1750, Sta-Rite PXC-175, open w/molded gasket	8 15/16	28 3/16	4	4	CX1750-RE, 25230-0175S, 817-0175P	PA175	C-8417	FC-1294
OC-828BM	Y	Hayward Star-Clear Plus C1750, Sta-Rite PXC-175, open w/molded gasket (Antimicrobial)	8 15/16	28 3/16	4	4	CX1750-RE, 25230-0175S, 817-0175P	PA175-M	C-8417AM	FC-1294M
OC-828C	Y	Waterway Proclear 125, 2006 and prior, Sta Rite Posi Clear PXC-125 open w/molded gasket	8 15/16	28 1/4	4	4	25230-0125S	PWWP-C125B	C-8413	FC-2575
OC-828D	N	Sta-Rite Posi Clear PXC-150, Waterway	8 15/16	28 1/4	4	4	817-0125P, 817-0150P, 25230-0150S	PWWP-C150B	C-8416	
OC-828DM	N	Sta-Rite Posi Clear PXC-150, Waterway (Antimicrobial)	8 15/16	28 1/4	4	4	817-0125P, 817-0150P, 25230-0150S	PWWP-C150B-M	C-8416AM	
OC-829A	Y	Hayward X-Stream 200	8 15/16	29 7/16	4	4	CCX2000RE, 817-0200N	PXST200	C-8319	FC-1274
OC-833A	Y	Jandy Industries CS 200	8 15/16	33 1/8	4	4	R0462400	PJANCS200	C-8418	FC-0823
OC-833AM	Y	Jandy Industries CS 200 (Antimicrobial)	8 15/16	33 1/8	4	4	R0462400	PJANCS200-M	C-8418AM	FC-0823M
OC-833C	Y	Jandy Industries CS 250	8 15/16	33 1/8	4	4	R0462500	PJANCS250	C-8425	FC-0824
OC-823LM	Y	Hayward X-Stream 175 (Antimicrobial)	8 15/16	23 1/4	4	4	CCX1750RE, 817-0150N	PXST175	C-8317	FC-1273
OC-823GM	Y	Jandy Industries CS 150 (Antimicrobial)	8 15/16	23 5/16	4	4	R0462300	PJANCS150	C-8414	FC-0822
OC-833CM	Y	Jandy Industries CS 250 (Antimicrobial)	8 15/16	33 1/8	4	4	R0462500	PJANCS250	C-8425	FC-0824

# POOL | 9-10"

BY OEM | CROSS REFERENCE

OC PART #	Stock	DESCRIPTION	OD INCHES	LENGTH INCHES	TOP HOLE INCHES	BOTTOM HOLE INCHES	OEM PART #	PLEATCO	UNICEL	FILBUR
OC-914A	N	Hayward ASL Full Flo C850	9 1/4	14 3/16	3	3	CX850-RE	PA85	C-9485	FC-1298
OC-914AM	N	Hayward ASL Full Flo C850 (Antimicrobial)	9 1/4	14 3/16	3	3	CX850-RE	PA85	C-9485	FC-1298
OC-919A	Y	Hayward ASL Full-Flo C1250, C1500	9 1/4	19 5/8	3	3	CX1250-RE, CX1500-RE	PA125	C-9499	FC-1299
OC-J14A	Y	Jacuzzi Brothers Sherlock 80	10	14 5/8	Handle	6	42-3674-09-R	PJ80	C-9480	FC-1400
OC-J20A	Y	Jacuzzi Brothers Sherlock 120	10	20 1/2	Handle	6	42-3675-08-R	PJ120	C-9481	FC-1401
OC-J24A	N	Jacuzzi Brothers Sherlock 160	10	24 5/16	Handle	6	42-3667-07-R	PJ160	C-9482	FC-1402
OC-J24AM	N	Jacuzzi Brothers Sherlock 160 (Antimicrobial)	10	24 5/16	Handle	6	42-3667-07-R	PJ160-M	C-9482AM	FC-1402M
OC-J30A	N	Jacuzzi Brothers Sherlock 200	10	30 3/16	Handle	6	42-3668-08-R	PJ200S	C-9483	FC-1403



OC PART #	Stock	DESCRIPTION	OD INCHES	LENGTH INCHES	TOP HOLE INCHES	BOTTOM HOLE INCHES	OEM PART #	PLEATCO	UNICEL	FILBUR
OC-J19D	Y	Hayward C100S	10 1/16	19 1/2	4	4	CX100XRE	PA100S	C-9440	
OC-J19DM	Y	Hayward C100S (Antimicrobial)	10 1/16	19 1/2	4	4	CX100XRE	PA100S-M	C-9440AM	
OC-J23C	Y	Hayward C150S	10 1/16	23 1/8	4	4	CX150XRE	PA150S	C-9441	
OC-J23CM	Y	Hayward C150S (Antimicrobial)	10 1/16	23 1/8	4	4	CX150XRE	PA150S-M	C-9441AM	
OC-J28A	Y	Hayward C200S	10 1/16	28 3/16	4	4	CX200XRE	PA200S	C-9442	
OC-J08A	Y	Predator 50 - Pentair Clean & Clear 50	10 1/8	8 9/16	6	6	R173213, 59054000, 1561-26	PAP50	C-9405	FC-0684
OC-J10A	Y	Jacuzzi CFR/CFT 50	10 1/8	10 1/16	5 15/16	6	42-2940-09-R	PJ50	C-9650	FC-1460
OC-J13A	N	Waterway Pool 75, Leisure Bay WW-50	10 1/8	13 1/4	6	6	817-0075, 111831	PWW75	C-9401	FC-2960
OC-J14B	N	Jacuzzi CFR/CFT 75	10 1/8	14 5/16	5 15/16	6	42-3509-00-R	PJ75	C-9475	FC-1480
OC-J16A	Y	Predator 75 - Pentair Clean & Clear 75, Cal Spas	10 1/8	16 1/8	6	6	R173214, 59054100	PAP75	C-9407	FC-0685
OC-J19C	N	Waterway Pool 100, Leisure Bay WW-100	10 1/8	19 1/4	6	6	817-0100, 111832	PWW100	C-9402	FC-2965
OC-J19A	Y	Jacuzzi CFR/CFT 100	10 1/8	19 15/16	5 15/16	6	42-2941-08-R	PJ100	C-9699	FC-1490
OC-J23D	N	Waterway Eco-Kleer 150	10 1/8	23.125	6	6	817-1200	PWWEK200	C-9489	
OC-J23E	Y	Waterway Eco-Kleer 200	10 1/8	23.125	6	6	817-1200	PWWEK200	C-9489	
OC-J23A	Y	Predator 100 - Pentair Clean & Clear 100	10 1/8	23 5/8	6	6	R173215, 59054200	PAP100	C-9410	FC-0686
OC-J23B	Y	added fabric upgrade to Predator 100 - Pentair Clean & Clear 100	10 1/8	23 5/8	6	6	R173215, 59054200	PAP118	C-9412	FC-0696
OC-J24C	N	Jacuzzi CFR/CFT 150	10 1/8	24 1/16	5 15/16	6	42-3508-01-R	PJ150	C-9478	FC-1495
OC-J24D	N	Jacuzzi CFR/CFT-200	10 1/8	24 1/16	5 15/16	6	42-3540-01-R	PJ200	C-9420	FC-1498
OC-J24DM	N	Jacuzzi CFR/CFT-200 (Antimicrobial)	10 1/8	24 1/16	5 15/16	6	42-3540-01-R	PJ200-M	C-9420AM	FC-1498M
OC-J25A	N	Waterway 200 Clearwater Cartridge	10 1/8	25 1/4	6	6	817-0200	PWW200	C-9404	FC-2968
OC-J25B	Y	Waterway Pool 150, Leisure Bay WW-150	10 1/8	25 1/4	6	6	817-0150, 111833	PWW150	C-9403	FC-2969
OC-J31A	Y	Predator 150 - Pentair Clean & Clear 150	10 1/8	31 1/8	6	6	R173216, 59054300	PAP150	C-9415	FC-0687
OC-J31B	Y	Predator 200 - Pentair Clean & Clear 200	10 1/8	31 1/8	6	6	R173217, 59054400	PAP200	C-9419	FC-0688
OC-J31C	Y	Upgrade to Predator 150	10 1/8	31 1/8	6	6		PAP175	C-9417	FC-0698
OC-J28AM	Y	Hayward C200S (Antimicrobial)	10 1/16	28 3/16	4	4	CX200XRE	PA200S	C-9442	
OC-J16AM	Y	Predator 75 - Pentair Clean & Clear 75, Cal Spas (Antimicrobial)	10 1/8	16 1/8	6	6	R173214, 59054100	PAP75	C-9407	FC-0685
OC-J23AM	Y	Predator 100 - Pentair Clean & Clear 100 (Antimicrobial)	10 1/8	23 5/8	6	6	R173215, 59054200	PAP100	C-9410	FC-0686
OC-J31AM	Y	Predator 150 - Pentair Clean & Clear 150 (Antimicrobial)	10 1/8	31 1/8	6	6	R173216, 59054300	PAP150	C-9415	FC-0687
OC-J31BM	Y	Predator 200 - Pentair Clean & Clear 200 (Antimicrobial)	10 1/8	31 1/8	6	6	R173217, 59054400	PAP200	C-9419	FC-0688



# FILTER CLEANING

## Pool and Spa Filter Cleaning Guide

### WHEN TO CLEAN:

- **For Pools:** Clean the cartridge(s) when the pressure gauge on the tank reads **8 psi above the initial system pressure**. Tip: Measure the psi with a clean pool filter first, and avoid letting the pressure exceed 8 psi over this initial reading.
- **For Spas:** Clean the cartridge(s) when you notice a **decrease in water jet performance** or when spa features like waterfalls are not functioning as well. This will depend on how frequently you use your spa.

### HOW TO CLEAN:

1. **Follow the Manufacturer's Instructions:** Begin by referring to your specific manufacturer's instructions on how to safely remove your filters.
2. **Turn Off the Power:**
  - For Pools: Turn off the power to your pump and bleed the pressure from the tank before removing its top section.
  - For Spas: Turn off the power to the spa and release any pressure in the system.
3. **Remove and Rinse the Filters:** Take out the filter(s) and hose them off thoroughly to remove dirt and debris. Avoid using high-pressure washers, which can damage the filters.
4. **Deep Cleaning (Optional):**
  - Soak your filters for at least one hour or preferably overnight for a thorough clean.
  - Use a filter cleaner like Jack's Magic Filter Cleaner for a faster turnaround.
  - Tip: It's a good idea to have a spare set of filters to use while you deep-clean the first set.
5. **Handling High Bather Loads (Oils, Lotions, etc.):** For filters clogged with oils or lotions, soak them overnight in one of the following solutions:
  - Detergent: Mix 1 cup of detergent with 5 gallons of water.
  - Trisodium Phosphate: Mix 1 cup with 5 gallons of water. (Always wear waterproof gloves and goggles when handling chemicals.)
  - Enzymes: Follow the manufacturer's instructions.
  - Filter Cleaner (like Jack's Magic Filter Cleaner): Follow the manufacturer's instructions.
6. **Algae-Contaminated Filters:** Soak the filters in a solution of water and pool algaecide for 15-30 minutes. Follow the dosage instructions provided by the algaecide manufacturer. (Always wear gloves and goggles when handling chemicals.)
7. **Rinse Thoroughly:** Make sure to rinse the filters well before putting them back into your pool or spa equipment.
8. **Reassemble Equipment:** Follow the manufacturer's instructions to properly reassemble your pool or spa system.

### SAFETY REMINDER:

Always use gloves and eyewear when working with cleaning solutions. Safety first!





# SPA REPLACEMENT FILTERS

BY OEM (MANUFACTURER)



# SPA | 2-4"

BY OEM | CROSS REFERENCE

OC PART #	Stock	DESCRIPTION	OD INCHES	LENGTH INCHES	TOP HOLE INCHES	BOTTOM HOLE INCHES	OEM PART #	PLEATCO	UNICEL	FILBUR
OC-210A	Y	Spa Fill (Sediment) Cartridge	2 3/4	10	Closed	3/4" FGH		PPS2100		FC-3128
OC-404C	Y	Threaded Top Load Filter	4	4	Handle	1 1/2" SAE		PMA15P3		
OC-404B	Y	Waterway Skim Filter 10	4 1/4	4	2 1/16	2 1/16	817-0010, 10146949, 25249, 378900	PWW10	C-4310	FC-3077
OC-408D	Y	Dream Maker Spas	4 3/4	8 1/8	Handle	1 1/2" MPT		PDM25P4		FC-0136
OC-408DM	N	Dream Maker Spas (Antimicrobial)	4 3/4	8 1/8	Handle	1 1/2" MPT		PDM25P4-M		FC-0136M
OC-405A	N	Saratoga Spas	4 5/8	5 15/16	Handle	1 1/2" MPT	303575	PSG13.5P4	4CH-19	FC-0122
OC-406C	Y	4 5/8 X 6 3/4, TSC, Top Load	4 5/8	6 3/4	Handle	1 1/2" MPT	20241-238, PVT-25	PHC25P4	4CH-20	FC-0125
OC-408N	N	Pageant Spa Top Load	4 5/8	8	Handle	1 1/2" MPT	20245-238, PVT-25N	PTL18P4	4CH-21	FC-0121
OC-408P	Y	Futura Spa (Strong Industries)	4 5/8	8	Handle	1 1/2" SAE		PSANT20P3	4CH-925	FC-0126
OC-408Q	N	FILTER, 20SF 2" MPT	4 5/8	8 1/16	Handle	2" MPT	X268521	PMA20-F2M	4CH-252	
OC-409A	Y	After Hours Spas, Nemco Spas, Threaded 25, Top Load	4 5/8	9 3/4	Handle	1 1/2" MPT	20254-238	PGS25P4	4CH-24	FC-0131
OC-411N	Y	Saratoga Spas Circulation Pump	4 5/8	11 3/8	Handle	1 1/2" MPT				FC-0132M
OC-411J	N	Advanced/LA Spas, Top Load	4 5/8	11 7/8	Handle	1 1/2" MPT	74407-98, 1561-14, 6540-484	PTL25P4	4CH-30	FC-0141
OC-414B	N	Advanced/LA Spas/ Nemco Spas	4 5/8	14 3/4	Handle	1 1/2" MPT	1561-05	PTL50P4	4CH-50	FC-0151
OC-415A	N	Hot Spring Spas (Watkins), Top Load	4 5/8	15	Handle	1 1/2" MPT	31382, 6540-486	PTL35P4	4CH-35	FC-0161
OC-415B	N	Saratoga Spas Top Load	4 5/8	15 1/4	Handle	1 1/2" MPT		PS-G40N-P4-M		FC-0133M

# SPA | 5"

BY OEM | CROSS REFERENCE

OC PART #	Stock	DESCRIPTION	OD INCHES	LENGTH INCHES	TOP HOLE INCHES	BOTTOM HOLE INCHES	OEM PART #	PLEATCO	UNICEL	FILBUR
OC-508E	N	FILTER WHT 25SQ NO INNER	5	8 1/2	Handle	1 1/2" FEMALE SAE	X268557	PMA26L		
OC-504A	N	Dynamic Series IV - Model DSF 35, Waterway	5	4 5/8	2 1/8	2 3/16	817-3510, 17-2606, 6000-134, R173432	PRB17.5SF-JH-PAIR	C-4401	FC-2386
OC-506B	Y	Dynamic Series IV, Model DSF, DFML-25C, Waterway	5	6 5/8	2 1/8	2 1/8	817-5010, 17-2464, R173433	PRB25SF-JH-PAIR	C-4405	FC-2387



OC PART #	Stock	DESCRIPTION	OD INCHES	LENGTH INCHES	TOP HOLE INCHES	BOTTOM HOLE INCHES	OEM PART #	PLEATCO	UNICEL	FILBUR
OC-506C	N	Freeflow Lagas, TLX, RLX	5	6 5/8	Closed	1 1/2" MPT	FF-100, Claro	PFF25TC-P4	4CH-23	FC-2400
OC-506D	N	Freeflow Lagas, CLX	5	6 5/8	2 1/8	1 1/2" MPT	FF-150	PFF25P4		FC-2399
OC-509D	Y	Dynamic Series IV - DFM, DFML, Waterway 35, In-Line	5	9 1/4	2 1/8	2 1/8	03FIL1300, 17-2482, 25393, 303557, 817-3501, R173431	PRB35-IN	C-4335	FC-2385
OC-509DM	Y	Dynamic Series IV - DFM, DFML, Waterway 35, In-Line (Antimicrobial)	5	9 1/4	2 1/8	2 1/8	03FIL1300, 17-2482, 25393, 303557, 817-3501, R173431	PRB35-IN-M	C-4335AM	FC-2385M
OC-509N	Y	Waterway Teleweir 35	5	9 1/4	Handle	1 1/2" FEMALE SAE	817-4035	PWW35L	4CH-935	FC-0170
OC-509NM	N	Waterway Teleweir 35 (Antimicrobial)	5	9 1/4	Handle	1 1/2" FEMALE SAE	817-4035	PWW35L-M	4CH-935AM	FC-0170M
OC-510J	N	Santana 25, Open Top	5	10 1/16	2 1/8	2 1/8		PPI25D	C-4428	FC-2620
OC-511H	N	Waterway 40, In-Line	5	11 5/16	2 1/8	2 1/8	817-0040, 100585, 3301-2241	PWW40	C-4339	FC-2915
OC-513P	Y	Waterway Teleweir 50	5	13 3/16	Handle	1 1/2" FEMALE SAE	817-4050	PWW50L	4CH-949	FC-0172
OC-513PM	N	Waterway Teleweir 50 (Antimicrobial)	5	13 3/16	Handle	1 1/2" FEMALE SAE	817-4050	PWW50L-M	4CH-949AM	FC-0172M
OC-513B	Y	Jacuzzi CFR/CFT 25	5	13 5/16	2 3/8	2 3/8	42-2891-08-R, 2590000, 5475000	PJ25-IN	C-5625	FC-1425
OC-513C	N	Jacuzzi CFR/CFT 37	5	13 5/16	2 3/8	2 3/8	42-3533-00-R	PJ37-IN	C-5635	FC-1437
OC-513D	N	Jacuzzi CFR/CFT 15	5	13 5/16	2 3/8	2 3/8		PJ15-IN-4	C-5615	FC-1415
OC-513E	Y	Dynamic Series II & III - RTL/RCF, Series I - Model RDC, Series IV - DFM, DFML, Waterway	5	13 5/16	2 1/8	2 1/8	17-2325	PRB25-IN-4	C-4625	FC-2370
OC-513G	Y	Dynamic Series I RDC-25, I RDC-25S, Dynamic Series II & II RTL/RCF-25, Dynamic Series IV-DFM, DFML, Waterway 25 In-Line, Custom Molded Products	5	13 5/16	2 1/8	2 1/8	17-2327, 100586, 33521, 25392, 303909, M-4326, 817-2500, R173429	PRB25-IN	C-4326	FC-2375
OC-513GM	Y	Dynamic Series I RDC-25, I RDC-25S, Dynamic Series II & II RTL/RCF-25, Dynamic Series IV-DFM, DFML, Waterway 25 In-Line, Custom Molded Products (Antimicrobial)	5	13 5/16	2 1/8	2 1/8	17-2327, 100586, 33521, 25392, 303909, M-4326, 817-2500, R173429	PRB25-IN-M	C-4326AM	FC-2375-M

OC PART #	Stock	DESCRIPTION	OD INCHES	LENGTH INCHES	TOP HOLE INCHES	BOTTOM HOLE INCHES	OEM PART #	PLEATCO	UNICEL	FILBUR
OC-513J	N	Dynamic Series I RDC-25, I RDC-25S, Series IV - DFM, DFML, Series II & KKK RTL/RCF-25, Waterway, Morgan Spas, Leisure Bay Spas, Custom Molded Products	5	13 5/16	2 1/8	2 1/8	R173430	PRB37-IN	C-4637	FC-2380
OC-513K	Y	Dynamic Series IV - DFM, DFML, Series II & III RTL/RCF-50, Series I RDC-50, RDC-50S, Waterway, Custom Molded Products	5	13 5/16	2 1/8	2 1/8	03FIL1600, 17-2380, RTL-50, 100533, 6540-471, 25391, 817-5000, R173434	PRB50-IN	C-4950	FC-2390
OC-513KM	Y	Dynamic Series IV - DFM, DFML, Series II & III RTL/RCF-50, Series I RDC-50, RDC-50S, Waterway, Custom Molded Products (Antimicrobial)	5	13 5/16	2 1/8	2 1/8	03FIL1600, 17-2380, RTL-50, 100533, 6540-471, 25391, 817-5000, R173434	PRB50-IN-M	C-4950AM	FC-2390M
OC-514C	N	Sonfarrel 50-220152, Cal Spas, Martec, Advantage Mfg.	5	14 7/8	2 1/8	2 1/8	CL-2807, CL2810	PMT50	C-4305	FC-1630
OC-514D	N	Sonfarrel 45	5	14 7/8	2 1/8	2 1/8		PMT45	C-4347	FC-2630
OC-517A	N	Advantage Electric 50	5	17 3/8	2 1/8	2 1/8	ELE-50 Top Load	PAE50	C-4349	FC-6310
OC-517D	N	Santana 45	5	17 5/8	2 1/8	2 1/8		PSI45-O	C-4449	FC-2640
OC-520A	Y	Dynamic Series V-DSC-75, Series II & III RTL/RCF-75, Custom Molded Products	5	20 1/8	2 1/8	2 1/8	17-2632, RTL-75, 25390, R173435	PRB75	C-4975	FC-2395
OC-520AM	Y	Dynamic Series V-DSC-75, Series II & III RTL/RCF-75, Custom Molded Products (Antimicrobial)	5	20 1/8	2 1/8	2 1/8	17-2632, RTL-75, 25390, R173435 (Antimicrobial)	PRB75-M	C-4975AM	FC-2395M
OC-523A	N	Waterway In-Line 75	5	23 5/8	2 1/8	2 1/8	817-7500	PCAL75	C-4970	FC-2930
OC-523B	N	Waterway 100, Cal Spas	5	23 5/8	2 1/8	2 1/8	817-1000	PCAL100	C-4995	FC-2940
OC-526A	N	Dynamic Series II & III RTL/RCF-100, Series V-DSC-100	5	26 1/2	2 1/8	2 1/8	17-2633, R173436	PRB100	C-4999	FC-2397
OC-510L	Y	Jacuzzi Hermosa, Redondo, Del Sol Spas	5 3/16	10 5/8	Handle	2" MPT	6540-723	PJW40SC-F2M	5CH-402	FC-2811
OC-512C	Y	Pacific Marquis Spas	5 3/16	12 1/4	Handle	2" MPT	20041, 370-0237	PPM-50SC-F2M	5CH-502	FC-0195
OC-512CM	N	Pacific Marquis Spas (Antimicrobial)	5 3/16	12 1/4	Handle	2" MPT	37-0237 (Antimicrobial)	PPM-50SC-F2M-M	5CH-502AM	FC-0195M
OC-512E	Y	Pacific Marquis Spas	5 3/16	12 1/4	Handle	2" MPT	20042, 370-0242, 370-0243	PPM-35SC-F2M	5CH-352	FC-0196
OC-512EM	N	Pacific Marquis Spas (Antimicrobial)	5 3/16	12 1/4	Handle	2" MPT	20042, 370-0242, 370-0243	PPM-35SC-F2M-M	5CH-352AM	FC-0196M
OC-516A	N	Cal Spa Victory 60	5 3/16	16	Handle	2" MPT		PCAL60-F2M	5CH-752	FC-0202

# SPA | 5"

BY OEM | CROSS REFERENCE

OC PART #	Stock	DESCRIPTION	OD INCHES	LENGTH INCHES	TOP HOLE INCHES	BOTTOM HOLE INCHES	OEM PART #	PLEATCO	UNICEL	FILBUR
OC-707D	N	Sunrise	7	7 7/8	Handle	1 1/2" MPT		PSN50P4		FC-0530
OC-709H	N	40SF Vita Spa, Coleman, Top Load	7	9 7/8	Handle	1 1/2" MPT	100433, 3301-1019	PVT40P4	7CH-40	FC-0435
OC-710A	N	Caldera 50	7	10 3/4	Swivel Handle	2" Male Slip	33016	PCD50	C-7451	FC-3084
OC-710B	N	Caldera 50 (new style)	7	10 3/4	Swivel Handle	2 11/16	1019401	PCD50N	C-7350	FC-3963
OC-710BM	N	Caldera 50 (new style)(Antimicrobial)	7	10 3/4	Swivel Handle	2 11/16	1019401	PCD50N-M	C-7350AM	FC-3963M
OC-714C	N	Caldera 75	7	14 5/8	Swivel Handle	2" Male Slip	33017	PCD75	C-7479	FC-3085
OC-714X	N	Coleman, Vita Spa 7x14 3/4, TSC	7	14 13/16	Handle	1 1/2" MPT	100434, 3301-1020	PVT50P4	7CH-50	FC-0463
OC-714D	N	Caldera 75 (new style)	7	14 7/8	Swivel Handle	2 11/16	1019301	PCD75N	C-7375	FC-3964
OC-709J	N	Waterco C-25	7 1/4	9 7/8	3	3	62040	PWC25	C-7427	FC-5125
OC-710D	Y	Dimension One 75, @Home Hot Tubs (open w/twist lock)	7 1/4	10 1/4	Castle Top	Special Lock Bottom	1561-00	PDO75-2000	C-7367	FC-3059
OC-714A	N	Advantage Electric 75	7 1/4	14 5/8	2 15/16	2 15/16	ELE-75	PAE75	C-7301	FC-6315
OC-721B	Y	Advantage Electric 100	7 1/4	21 1/2	3	3	ELE-100	POX100	C-7302	FC-6320
OC-728A	N	Advantage Electric 150	7 1/4	28 9/16	3	3	ELE-150	PAE150	C-7303	FC-6325
OC-707B	N	Master Spas Legacy / Freedom	7 1/8	7 3/16	Handle	2" MPT	X268080	PMA40-F2M		FC-0418
OC-707A	N	Artesian Top Load Spa (Coleman)	7 1/8	7 9/16	Handle	2" MPT	100520, 3301-2109	PAS35-F2M	7CH-322	FC-0420
OC-707AM	N	Artesian Top Load Spa (Coleman) (Antimicrobial)	7 1/8	7 9/16	Handle	2" MPT	100520, 3301-2109	PAS35-F2M-M	7CH-322AM	FC-0420M
OC-705A	Y	Sundance Microclean Depth Filter	7 3/4	5	4 3/4	4 3/4	6540-502	PPS750		FC-2812

# SPA | 6"

BY OEM | CROSS REFERENCE

OC PART #	Stock	DESCRIPTION	OD INCHES	LENGTH INCHES	TOP HOLE INCHES	BOTTOM HOLE INCHES	OEM PART #	PLEATCO	UNICEL	FILBUR
OC-605A	N	Softub; Leisure Bay; 6 x 5 1/2, TSC	6	5 1/2	Handle	1 1/2" MPT	90-802	PTL20W-SV-P4	6CH-25	FC-0305
OC-606A	N	American Spas; Artesian (Coleman)	6	6 1/2	Handle	1 1/2" MPT		PTL25W-SV-P4		FC-0310
OC-607B	Y	New Artesian 6" D Spa	6	7 5/8	Handle	2" MPT		PAS40-F2M	6CH-352	FC-0312
OC-607BM	N	New Artesian 6" D Spa (Antimicrobial)	6	7 5/8	Handle	2" MPT		PAS40-F2M-M	6CH-352AM	FC-0312M
OC-607D	Y	Waterway Front Access Skimmer (2 required)	6	7 5/8	Handle	1 1/2" SAE	817-0050, 03FIL1400, 25252, 378902, PWW50	PWW50P3	6CH-940	FC-0359

OC PART #	Stock	DESCRIPTION	OD INCHES	LENGTH INCHES	TOP HOLE INCHES	BOTTOM HOLE INCHES	OEM PART #	PLEATCO	UNICEL	FILBUR
OC-607DM	N	Waterway Front Access Skimmer, Aber Hot Tubs, (Antimicrobial)	6	7 5/8	Handle	1 1/2" SAE	817-0050, 03FIL1400, 25252, 378902, PWW50	PW-W50P3-M	6CH-940AM	FC-0359M
OC-607C	Y	Top Load, Sunrise Modification	6	7 7/8	Handle	1 1/2" MPT		PPG50P4	6CH-49	FC-0314
OC-608E	Y	Advanced/LA Spas; Aber Hottub	6	8 3/4	Handle	1 1/2" MPT	03FIL1500	PTL47W-P4	6CH-47	FC-0315
OC-609D	Y	Master Spas Twilight	6	9 1/4	Handle	2" MPT	X268365	PMA40L-F2M		FC-0317
OC-609DM	N	Master Spas Twilight (Antimicrobial)	6	9 1/4	Handle	2" MPT	X268365	PMA40L-F2M-M		FC-0317M
OC-609B	N	Four Seasons Spa	6	9 3/4	Handle	1 1/2" MPT		PTL25W-P4		FC-3083
OC-609A	N	DFA Spas; Arizona Pacific	6	9 13/16	Handle	1 1/2" MPT		PTL35W-P4	6CH-35	FC-0320
OC-611A	N	Master Spas; Freedom Spas	6	11 15/16	Handle	1 1/2" MPT		PTL45W-P4	6CH-45	FC-0330
OC-613A	N	Advanced/LA Spas	6	13 3/16	Handle	1 1/2" MPT		PTL50W-SV-P4	6CH-50	FC-0340
OC-613B	N	Seven Seas Spas	6	13 3/8	Handle	1 1/2" MPT		PTL40W-P4		FC-0351
OC-614A	N	Caribbean/Catalina; Jetta Spas; Wild Water Spa	6	14 13/16	Handle	1 1/2" MPT		PTL60W-P4	6CH-60	FC-0350
OC-614B	N	Advanced Spa 75	6	14 13/16	Handle	1 1/2" MPT		PTL50W-P4	C-6475	FC-3089
OC-608A	Y	Master Spas outer cartridge for PMA-PROPAK2-M (Antimicrobial)	6 1/2	8	4 1/16	4 1/16		PMA25		FC-1008
OC-608AM	N	Master Spas outer cartridge for PMA-PROPAK2-M (Antimicrobial)	6 1/2	8	4 1/16	4 1/16		PMA25-M		FC-1008M
OC-707E	Y	Artesian Spas 50	6 3/4	7 7/8	Handle	2" MPT		PAS50-F2M		
OC-607A	Y	Artesian Spas 50	6 3/4	7 7/8	Handle	2" MPT		PAS50SV-F2M	6CH-502	FC-0311
OC-614C	Y	Watkins Hot Spring Spas	6 3/8	14	1 15/16	1 15/16	1642301-1	PWK35B		FC-3921
OC-614D	Y	Watkins Hot Spring Spas	6 3/8	14	1 15/16	1 15/16		PWK70B		
OC-615A	Y	Jacuzzi Premium J-300, J400 (injection molded handle not included)	6 5/8	15 1/2	Open Top	2" SAE	6541-383	PJW60TL-OT-F2S	6CH-961	FC-2715
OC-615B	Y	Jacuzzi Premium J-300, J400	6 5/8	15 1/2	Handle	2" SAE	6540-476	PJW60TL-F2S	6CH-960	FC-2800



# SPA | 7"

BY OEM | CROSS REFERENCE

OC PART #	Stock	DESCRIPTION	OD INCHES	LENGTH INCHES	TOP HOLE INCHES	BOTTOM HOLE INCHES	OEM PART #	PLEATCO	UNICEL	FILBUR
OC-707D	N	Sunrise	7	7 7/8	Handle	1 1/2" MPT		PSN50P4		FC-0530
OC-709H	N	40SF Vita Spa, Coleman, Top Load	7	9 7/8	Handle	1 1/2" MPT	100433, 3301-1019	PVT40P4	7CH-40	FC-0435
OC-710A	N	Caldera 50	7	10 3/4	Swivel Handle	2" Male Slip	33016	PCD50	C-7451	FC-3084
OC-710B	N	Caldera 50 (new style)	7	10 3/4	Swivel Handle	2 11/16	1019401	PCD50N	C-7350	FC-3963
OC-710BM	N	Caldera 50 (new style)(Antimicrobial)	7	10 3/4	Swivel Handle	2 11/16	1019401	PCD50N-M	C-7350AM	FC-3963M
OC-714C	N	Caldera 75	7	14 5/8	Swivel Handle	2" Male Slip	33017	PCD75	C-7479	FC-3085
OC-714X	N	Coleman, Vita Spa 7x14 3/4, TSC	7	14 13/16	Handle	1 1/2" MPT	100434, 3301-1020	PVT50P4	7CH-50	FC-0463
OC-714D	N	Caldera 75 (new style)	7	14 7/8	Swivel Handle	2 11/16	1019301	PCD75N	C-7375	FC-3964
OC-709J	N	Waterco C-25	7 1/4	9 7/8	3	3	62040	PWC25	C-7427	FC-5125
OC-710D	Y	Dimension One 75, @Home Hot Tubs (open w/twist lock)	7 1/4	10 1/4	Castle Top	Special Lock Bottom	1561-00	PDO75-2000	C-7367	FC-3059
OC-714A	N	Advantage Electric 75	7 1/4	14 5/8	2 15/16	2 15/16	ELE-75	PAE75	C-7301	FC-6315
OC-721B	Y	Advantage Electric 100	7 1/4	21 1/2	3	3	ELE-100	POX100	C-7302	FC-6320
OC-728A	N	Advantage Electric 150	7 1/4	28 9/16	3	3	ELE-150	PAE150	C-7303	FC-6325
OC-707B	N	Master Spas Legacy / Freedom	7 1/8	7 3/16	Handle	2" MPT	X268080	PMA40-F2M		FC-0418
OC-707A	N	Artesian Top Load Spa (Coleman)	7 1/8	7 9/16	Handle	2" MPT	100520, 3301-2109	PAS35-F2M	7CH-322	FC-0420
OC-707AM	N	Artesian Top Load Spa (Coleman) (Antimicrobial)	7 1/8	7 9/16	Handle	2" MPT	100520, 3301-2109	PAS35-F2M-M	7CH-322AM	FC-0420M
OC-705A	Y	Sundance Microclean Depth Filter	7 3/4	5	4 3/4	4 3/4	6540-502	PPS750		FC-2812

# SPA | 8"

BY OEM | CROSS REFERENCE

OC PART #	Stock	DESCRIPTION	OD INCHES	LENGTH INCHES	TOP HOLE INCHES	BOTTOM HOLE INCHES	OEM PART #	PLEATCO	UNICEL	FILBUR
OC-805A	Y	Bullfrog 35, 2003-2012 (short thread)	8	5 3/4	Handle	2" modified ACME	00189 323515	PBF35	8CH-950	FC-0536
OC-805AM	Y	Bullfrog 35, 2003-2012 (short thread)	8	5 3/4	Handle	2" modified ACME	00190 323515	PBF35M	8CH-950M	FC-0536M
OC-805B	Y	Bullfrog 35, 2003-2012 (longthread)	8	5 3/4	Handle	2" modified ACME	00191 354561	PBF36	8CH-951	FC-9949
OC-806A	Y	Master Spas EP (new style)	8	6 7/8	4 1/16	4 1/16	X268330	PMA45-2004-R	C-8341	FC-1007
OC-806AM	N	Master Spas EP (new style) (Antimicrobial)	8	6 7/8	4 1/16	4 1/16	X268325	PMA45-2004R-M	C-8341AM	FC-1007M

# SPA | 8"

BY OEM | CROSS REFERENCE

OC PART #	Stock	DESCRIPTION	OD INCHES	LENGTH INCHES	TOP HOLE INCHES	BOTTOM HOLE INCHES	OEM PART #	PLEATCO	UNICEL	FILBUR
OC-809A	N	Coleman Spas 50	8	9	2 1/8	2" Slip	100593, 3301-2261	PCS50N	C-8450	FC-3310
OC-809B	N	Master Spas, Top Load Cartridge	8	9 1/4	Handle	2" MPT	X268500	PMA70-F2M		FC-0516
OC-813A	Y	Coleman Spas 75	8	13 1/16	2 1/8	2" Slip	100594, 3301-2262	PCS75N	C-8475	FC-3320
OC-815B	N	Sundance Spas 95	8	15 1/2	Handle	2" MPT	2540-381	PSD95-F2L	8CH-102	FC-2781
OC-816A	N	Caldera 100	8	16 1/2	Handle	3 5/8	1039607	PCD100W	C-8399	FC-3965
OC-807A	N	Vita Spa AB5-300 (Antimicrobial)	8 1/2	7 1/4	Handle	2" MPT		PVT-30WH-F2M		FC-3052
OC-807AM	N	Vita Spa AB5-300 (Antimicrobial)	8 1/2	7 1/4	Handle	2" MPT		PVT-30WH-F2M-M		FC-3052
OC-810C	Y	Watkins Hot Spring Spas upgrade from PWK45N	8 1/2	10 1/2	3	3	31114	PWK65	C-8465	FC-3960
OC-814A	Y	Sundance Microclean	8 1/2	14 5/8	2" SAE (Closed)	2 3/4" beveled edge	6540-501	PSD85-2002	C-8380	FC-2810
OC-819D	N	Sundance Double End 120	8 1/2	19	2 3/16 Slip	2 3/4" beveled edge	6540-488	PSD125-2000	C-8326	FC-2780



# UPC CODES

## ONCORE INTERNAL PART NUMBER CROSS REFERENCE

### HOW TO READ AN ONCORE INTERNAL MASTER PART NUMBER

WPOC	MAS	8	06	A	M	4P
PREFIX	OEM	OUTER DIAMETER	LENGTH	SERIES DIGIT	MEDIA TYPE	PACK QTY
Indicates OnCore filter type WPOC for Pool WSOC for Spa	First three characters of manufacturer - See below	Single digit rounded down to the closest integer. 10" Diam = J 11" Diam = K	Two digit end cap to end cap length rounded down to the closest integer	Indicating the sequence of diameter / length. Example: A = 1st in SERIES, B = 2nd...	ANTIMICROBIAL MEDIA An 'M' is added at the end of the part number	Represents the number of cartridges sold in the case 4P= 4 pack

PART #	INTERNAL #	CASE QTY	UPC EACH	UPC CASE
OC-210A	WDOC.SED210A-12P	12	TBA	TBA
OC-404B	WSOC.WWY404B-18P	18	00849373017259	10849373017256
OC-404C	WSOC.MAS404C-12P	12	00849373017235	10849373017232
OC-405A	WSOC.SRG405A-6P	6	TBA	TBA
OC-406C	WSOC.HRC406C-6P	6	849373016443	10849373016440
OC-408D	WSOC.DRM408D-6P	6	849373016399	10849373016396
OC-408DM	WSOC.DRM408DM-6P	6	849373017365	10849373017362
OC-408N	WSOC.PLT408N-6P	6	TBA	TBA
OC-408P	WSOC.STG408P-6P	6	TBA	TBA
OC-408Q	WSOC.MAS408Q-6P	6	TBA	TBA
OC-409A	WSOC.GTS409A-6P	6	849373015972	10849373015979
OC-411D	WPOC.HAY411D-6P	6	00849373016689	10849373016686
OC-411E	WPOC.HAY411E-6P	6	00849373016696	10849373016693
OC-411F	WPOC.HAY411F-6P	6	00849373016702	10849373016709
OC-411J	WSOC.PLT411J-6P	6	TBA	TBA
OC-411N	WSOC.SRG411L-6P	6	TBA	TBA
OC-414B	WSOC.PLT414B-6P	6	00849373017204	10849373017201
OC-415A	WSOC.PLT415A-6P	6	TBA	TBA
OC-415B	WSOC.SRG415B-6P	6	TBA	TBA
OC-504A	WSOC.RBW504A-12P	12	849373016603	10849373016600
OC-506B	WSOC.RBW506B-12P	12	849373016610	10849373016617
OC-506C	WSOC.FFL506C-6P	6	849373016412	10849373016419

PART #	INTERNAL #	CASE QTY	UPC EACH	UPC CASE
OC-506D	WSOC.FFL506D-6P	6	849373016405	10849373016402
OC-508A	WSOC.LAS508A-6P	6	849373016023	10849373016020
OC-508AM	WSOC.LAS508AM-6P	6	TBA	TBA
OC-508B	WSOC.MAX508B-6P	6	849373016047	10849373016044
OC-508BM	WSOC.MAX508BM-6P	6	TBA	TBA
OC-508C	WSOC.MAX508C-6P	6	00849373017716	10849373017713
OC-508D	WSOC.MAX508D-6P	6	TBA	TBA
OC-508E	WSOC.MAS508E-6P	6	TBA	TBA
OC-508F	WSOC.MAX508C-6P	6	8.49373E+11	1.08494E+13
OC-509A	WSOC.FFL509A-6P	6	00879373016436	10849373016433
OC-509AM	WSOC.FFL509AM-6P	6	TBA	TBA
OC-509D	WSOC.RBW509D-6P	6	849373016078	10849373016075
OC-509DM	WSOC.RBW509DM-6P	6	849373017419	10849373017416
OC-509N	WSOC.WWY509N-6P	6	849373016665	10849373016662
OC-509NM	WSOC.WWY509NM-6P	6	TBA	TBA
OC-510A	WSOC.FFL510A-6P	6	849373016429	10849373016426
OC-510C	WSOC.JCW510C-6P	6	849373016467	10849373016464
OC-510D	WSOC.JCW510D-6P	6	849373016474	10849373016471
OC-510E	WSOC.LBS510E-6P	6	00849373017709	10849373017706
OC-510EM	WSOC.LBS510EM-6P	6	TBA	TBA
OC-510J	WSOC.SAN510J-6P	6	TBA	TBA
OC-510K	WSOC.WTK510K-6P	6	849373016290	10849373016297

# UPC | OC CROSS REFERENCE

PART #	INTERNAL #	CASE QTY	UPC EACH	UPC CASE
OC-510L	WSOC.JCW510L-6P	6	849373016450	10849373016457
OC-511H	WSOC.WWY511H-6P	6	849373016658	10849373016655
OC-512C	WSOC.PMQ512C-6P	6	849373016191	10849373016198
OC-512CM	WSOC.PMQ512CM-6P	6	TBA	TBA
OC-512E	WSOC.PMQ512E-6P	6	849373016597	10849373016594
OC-512EM	WSOC.PMQ512EM-6P	6	849373017471	10849373017478
OC-513B	WSOC.JCZ513B-6P	6	849373016481	10849373016488
OC-513C	WSOC.JCZ513C-6P	6	TBA	TBA
OC-513D	WSOC.JCZ513D-6P	6	TBA	TBA
OC-513E	WSOC.RBW513E-6P	6	TBA	TBA
OC-513G	WSOC.RBW513G-6P	6	849373016061	10849373016068
OC-513GM	WSOC.RBW513GM-6P	6	849373017600	10849373017607
OC-513J	WSOC.RBW513J-6P	6	TBA	TBA
OC-513K	WSOC.RBW513K-6P	6	849373016085	10849373016082
OC-513KM	WSOC.RBW513KM-6P	6	849373016627	10849373016624
OC-513P	WSOC.WWY513P-6P	6	849373016115	10849373016112
OC-513PM	WSOC.WWY513PM-6P	6	849373017686	10849373017683
OC-514A	WSOC.LBS514A-4P	4	00849373017211	10849373017218
OC-514AM	WSOC.LBS514AM-4P	4	00849373017464	10849373017461
OC-514C	WSOC.MTC514C-6P	6	849373016504	10849373016501
OC-514D	WSOC.MTC514D-6P	6	849373016511	10849373016518
OC-516A	WSOC.CAL516A-6P	6	849373016337	10849373016334
OC-516AM	WSOC.CAL516AM-6P	6	849373017457	10849373017454
OC-517A	WSOC.OXY517A-5P	5	TBA	TBA
OC-517C	WSOC.LBS517C-4P	4	TBA	TBA
OC-517D	WSOC.SAN517D-6P	6	849373016641	10849373016648
OC-520A	WSOC.RBW520A-6P	6	849373016092	10849373016099
OC-520AM	WSOC.RBW520AM-6P	6	849373017617	10849373017614
OC-521A	WSOC.CST521A-4P	4	TBA	TBA
OC-523A	WSOC.CAL523A-6P	6	849373016344	10849373016341
OC-523B	WSOC.CAL523B-6P	6	849373015996	10849373015993
OC-526A	WSOC.RBW526A-4P	4	TBA	TBA
OC-530A	WSOC.CST530A-4P	4	TBA	TBA
OC-605A	WSOC.PLT605A-6P	6	849373016535	10849373016532
OC-606A	WSOC.PLT606A-6P	6	849373016542	10849373016549
OC-607A	WSOC.ARS607A-4P	4	849373016313	10849373016310
OC-607B	WSOC.ARS607B-6P	6	849373015989	10849373015986
OC-607BM	WSOC.ARS607BM-6P	6	849373017426	10849373017423
OC-607C	WSOC.SUN607C-6P	6	849373016054	10849373016051
OC-607D	WSOC.WWY607D-6P	6	849373016122	10849373016129
OC-607DM	WSOC.WWY607DM-6P	6	849373016672	10849373016679
OC-608A	WSOC.MAS608A-4P	4	849373017532	10849373017539

PART #	INTERNAL #	CASE QTY	UPC EACH	UPC CASE
OC-608AM	WSOC.MAS608AM-4P	4	TBA	TBA
OC-608E	WSOC.PLT608E-6P	6	849373016559	10849373016556
OC-609A	WSOC.PLT609A-4P	4	849373016566	10849373016563
OC-609B	WSOC.PLT609B-6P	6	TBA	TBA
OC-609D	WSOC.MAS609D-6P	6	00849373017549	10849373017546
OC-609DM	WSOC.MAS609DM-6P	6	TBA	TBA
OC-611A	WSOC.PLT611A-4P	4	849373016573	10849373016570
OC-613A	WSOC.PLT613A-4P	4	849373016580	10849373016587
OC-613B	WSOC.PLT613B-3P	3	TBA	TBA
OC-614A	WSOC.PLT614A-2P	2	TBA	TBA
OC-614B	WSOC.PLT614B-3P	3	TBA	TBA
OC-614C	WSOC.WTK614C-4P	4	00849373017495	10849373017492
OC-614D	WSOC.WTK614D-4P	4	00849373017167	10849373017164
OC-615A	WSOC.JCW615A-2P	2	849373016498	10849373016495
OC-615B	WSOC.JCW615B-2P	2	849373016016	10849373016013
OC-705A	WSOC.SUD705A-12P	12	TBA	TBA
OC-707A	WSOC.ARS707A-3P	3	00849373017396	10849373017393
OC-707AM	WSOC.ARS707AM-3P	3	00849373017389	10849373017386
OC-707B	WSOC.MAS707B-4P	4	TBA	TBA
OC-707D	WSOC.SUN707D-4P	4	TBA	TBA
OC-707E	WSOC.ARS607A-4P	4	8.49373E+11	1.08494E+13
OC-709E	WPOC.HAY709E-4P	4	849373016719	10849373016716
OC-709H	WSOC.VTA709H-4P	4	TBA	TBA
OC-709J	WSOC.WAC709J-4P	4	TBA	TBA
OC-710A	WSOC.CLD710A-2P	2	849373016351	10849373016358
OC-710B	WSOC.CLD710B-2P	2	849373016368	10849373016365
OC-710BM	WSOC.CLD710BM-2P	2	849373017372	10849373017379
OC-710D	WSOC.DON710D-4P	4	TBA	TBA
OC-711C	WPOC.PNF711C-4P	4	849373017105	10849373017102
OC-711D	WPOC.PNX711D-4P	4	TBA	TBA
OC-714A	WSOC.OXY714A-2P	2	TBA	TBA
OC-714C	WSOC.CLD714C-2P	2	849373016375	10849373016372
OC-714D	WSOC.CLD714D-2P	2	00849373017556	10849373017553
OC-714G	WPOC.HAY714G-4P	4	849373016726	10849373016723
OC-714H	WPOC.HAY714H-4P	4	849373016733	10849373016730
OC-714HM	WPOC.HAY714HM-4P	4	TBA	TBA
OC-714K	WPOC.HAY714K-4P	4	849373016740	10849373016747
OC-714L	WPOC.JAN714L-2P	2	TBA	TBA
OC-714T	WPOC.PNC714T-4P	4	849373017075	10849373017072
OC-714TM	WPOC.PNC714T-4PM	4	849373017075	10849373017072
OC-714U	WPOC.PNF714U-2P	2	849373017112	10849373017119
OC-714X	WSOC.VTA714X-2P	2	TBA	TBA
OC-716B	WPOC.PNX716B-2P	2	TBA	TBA



# UPC | OC CROSS REFERENCE

PART #	INTERNAL #	CASE QTY	UPC EACH	UPC CASE
OC-718B	WPOC.PNF718B-2P	2	TBA	TBA
OC-719D	WPOC.HAY719D-4P	4	849373016757	10849373016754
OC-719DM	WPOC.HAY719D-4PM	4	849373016757	10849373016754
OC-719E	WPOC.HAY719E-4P	4	849373016764	10849373016761
OC-719F	WPOC.HAY719F-2P	2	849373016771	10849373016778
OC-719G	WPOC.HAY719G-4P	4	849373016252	10849373016259
OC-719H	WPOC.JAN719H-2P	2	TBA	TBA
OC-719P	WPOC.PNX719P-2P	2	TBA	TBA
OC-719Q	WPOC.STR719Q-2P	2	TBA	TBA
OC-719T	WPOC.WAC719T-2P	2	TBA	TBA
OC-719U	WPOC.HAY719U-4P	4	00849373017723	10849373017720
OC-720B	WPOC.PNC720B-4P	4	849373016160	10849373016167
OC-720BM	WPOC.PNC720B-4PM	4	849373016160	10849373016167
OC-721B	WSOC.OXY721B-2P	2	00849373016528	10849373016525
OC-722C	WPOC.PNF722C-2P	2	849373017129	10849373017126
OC-722D	WPOC.PNF722D-2P	2	849373017136	10849373017133
OC-724A	WPOC.PNF724A-2P	2	TBA	TBA
OC-725A	WPOC.HAY725A-4P	4	849373016788	10849373016785
OC-725AM	WPOC.HAY725A-4PM	4	849373016788	10849373016785
OC-725B	WPOC.HAY725B-4P	4	849373016269	10849373016266
OC-725BM	WPOC.HAY725BM-4P	4	849373017679	10849373017676
OC-725C	WPOC.HAY725C-4P	4	849373016795	10849373016792
OC-725CM	WPOC.HAY725CM-4P	4	849373017334	10849373017331
OC-725E	WPOC.PNX725E-2P	2	TBA	TBA
OC-725F	WPOC.PLC725F	1	TBA	TBA
OC-726B	WPOC.JAN726B-4P	4	849373016238	10849373016235
OC-726C	WPOC.JAN726C-4P	4	849373016153	10849373016150
OC-726CM	WPOC.JAN726CM-4P	4	849373016931	10849373016938
OC-726E	WPOC.PNC726E-4P	4	849373017082	10849373017089
OC-726F	WPOC.PNC726F-4P	4	849373016146	10849373016143
OC-726FM	WPOC.PNC726FM-4P	4	849373017099	10849373017096
OC-728A	WSOC.OXY728A-2P	2	TBA	TBA
OC-729D	WPOC.HAY729D	1	849373016801	TBA
OC-729DM	WPOC.HAY729DM	1	849373017648	TBA
OC-729E	WPOC.JAN729E-2P	2	TBA	TBA
OC-729J	WPOC.STR729J-2P	2	TBA	TBA
OC-730A	WPOC.PNF730A	1	TBA	TBA
OC-732A	WPOC.HAY732A-4P	4	849373016818	10849373016815
OC-732B	WPOC.HAY732B-4P	4	849373016276	10849373016273
OC-732C	WPOC.HAY732C-4P	4	849373016825	10849373016822
OC-732CM	WPOC.HAY732CM-4P	4	TBA	TBA
OC-732E	WPOC.JAN732E-4P	4	849373016245	10849373016242
OC-732F	WPOC.PNC732F-4P	4	849373016184	10849373016181

PART #	INTERNAL #	CASE QTY	UPC EACH	UPC CASE
OC-732FM	WPOC.PNC732FM-4P	4	849373017594	10849373017591
OC-732G	WPOC.PLC732G	1	TBA	TBA
OC-733A	WPOC.PNF733A	1	TBA	TBA
OC-805A	WSOC.BUF805A-4P	4	849373016320	10849373016327
OC-805AM	WSOC.BUF805AM-4P	4	TBA	TBA
OC-805B	WSOC.BUF805B-4P	4	00489373017245	10849373017249
OC-806A	WSOC.MAS806A-4P	4	849373016030	10849373016037
OC-806AM	WSOC.MAS806AM-4P	4	TBA	TBA
OC-807A	WSOC.VTA807A-4P	4	849373016283	10849373016280
OC-807AM	WSOC.VTA807AM-4P	4	TBA	TBA
OC-809A	WSOC.CLS809A-2P	2	849373016382	10849373016389
OC-809B	WSOC.MAS809B-2P	2	TBA	TBA
OC-810C	WSOC.WTK810C-2P	2	849373016306	10849373016303
OC-813A	WSOC.CLS813A-2P	2	849373016009	10849373016006
OC-814A	WSOC.SUD814A	1	00849373017433	TBA
OC-815B	WSOC.SUD815B-2P	2	TBA	TBA
OC-816A	WSOC.CLD816A-2P	2	TBA	TBA
OC-817A	WPOC.HAY817A	1	TBA	TBA
OC-817B	WPOC.HAY817B	1	849373016832	TBA
OC-817BM	WPOC.HAY817BM	1	849373016832	TBA
OC-817C	WPOC.HAY817C	1	849373016849	TBA
OC-817CM	WPOC.HAY817CM	1	849373017297	TBA
OC-817D	WPOC.HAY817D	1	849373016856	TBA
OC-817DM	WPOC.HAY817DM	1	849373017501	TBA
OC-817F	WPOC.WWY817F	1	849373017143	TBA
OC-817G	WPOC.HAY817G	1	TBA	TBA
OC-819D	WSOC.SUD819D	1	849373016108	TBA
OC-823A	WPOC.HAY823A	1	849373016863	TBA
OC-823AM	WPOC.HAY823AM	1	849373017631	TBA
OC-823B	WPOC.HAY823B	1	849373016870	TBA
OC-823BM	WPOC.HAY823BM	1	849373017594	TBA
OC-823C	WPOC.HAY823C	1	849373016139	TBA
OC-823CM	WPOC.HAY823CM	1	849373016887	TBA
OC-823E	WPOC.JAN823E	1	849373016948	TBA
OC-823EM	WPOC.JAN823EM	1	849373017358	TBA
OC-823G	WPOC.JAN823G	1	849373016955	TBA
OC-823GM	WPOC.JAN823GM	1	849373016955	TBA
OC-823H	WPOC.WWY823H	1	849373017150	TBA
OC-823HM	WPOC.WWY823HM	1	849373017167	TBA
OC-823K	WPOC.WWY823K	1	849373016177	TBA
OC-823L	WPOC.HAY823L	1	TBA	TBA
OC-823LM	WPOC.HAY823LM	1	TBA	TBA
OC-828A	WPOC.HAY828A	1	849373016894	TBA

# UPC | OC CROSS REFERENCE

PART #	INTERNAL #	CASE QTY	UPC EACH	UPC CASE
OC-828B	WPOC.HAY828B	1	849373016900	TBA
OC-828BM	WPOC.HAY828BM	1	849373017587	TBA
OC-828C	WPOC.WWY828C	1	849373017174	TBA
OC-828D	WPOC.WWY828D	1	00849373017846	TBA
OC-828DM	WPOC.WWY828DM	1	TBA	TBA
OC-829A	WPOC.HAY829A	1	TBA	TBA
OC-833A	WPOC.JAN833A	1	849373016962	TBA
OC-833AM	WPOC.JAN833AM	1	849373016979	TBA
OC-833C	WPOC.JAN833C	1	849373016986	TBA
OC-833CM	WPOC.JAN833CM	1	849373016986	TBA
OC-914A	WPOC.HAY914A	1	849373016917	TBA
OC-914AM	WPOC.HAY914AM	1	TBA	TBA
OC-919A	WPOC.HAY919A	1	849373016924	TBA
OC-J08A	WPOC.PNAJ08A-3P	3	849373017044	10849373017041
OC-J10A	WPOC.JCZJ10A-2P	2	TBA	TBA
OC-J13A	WPOC.WWYJ13A	1	00849373017563	TBA
OC-J14A	WPOC.JCZJ14A	1	849373016993	TBA
OC-J14B	WPOC.JCZJ14B	1	00849373017525	TBA
OC-J16A	WPOC.PNAJ16A	1	849373017181	TBA
OC-J16AM	WPOC.PNAJ16AM	1	849373017181	TBA
OC-J19A	WPOC.JCZJ19A	1	849373017006	TBA
OC-J19C	WPOC.WWYJ19C	1	00849373017570	TBA
OC-J19D	WPOC.HAYJ19D	1	00849373017266	TBA
OC-J19DM	WPOC.HAYJ19DM	1	00849373017488	TBA
OC-J20A	WPOC.JCZJ20A	1	849373017013	TBA
OC-J23A	WPOC.PNAJ23A	1	849373016207	TBA
OC-J23AM	WPOC.PNAJ23AM	1	849373016207	TBA
OC-J23B	WPOC.PNAJ23B	1	849373017051	TBA
OC-J23C	WPOC.HAYJ23C	1	00849373017273	TBA
OC-J23CM	WPOC.HAYJ23CM	1	00849373017327	TBA
OC-J23D	WPOC.WWYJ23D	1	TBA	TBA
OC-J23E	WPOC.WWYJ23E	1	TBA	TBA
OC-J24A	WPOC.JCZJ24A	1	849373017020	TBA
OC-J24AM	WPOC.JCZJ24AM	1	TBA	TBA
OC-J24C	WPOC.JCZJ24C	1	00849373017853	TBA
OC-J24D	WPOC.JCZJ24D	1	00849373017860	TBA
OC-J24DM	WPOC.JCZJ24DM	1	TBA	TBA
OC-J25A	WPOC.WWYJ25A	1	TBA	TBA
OC-J25B	WPOC.WWYJ25B	1	00849373017518	TBA
OC-J28A	WPOC.HAYJ28A	1	00849373017280	TBA
OC-J28AM	WPOC.HAYJ28AM	1	00849373017280	TBA

PART #	INTERNAL #	CASE QTY	UPC EACH	UPC CASE
OC-J30A	WPOC.JCZJ30A	1	849373017037	TBA
OC-J31A	WPOC.PNAJ31A	1	849373016214	TBA
OC-J31AM	WPOC.PNAJ31AM	1	849373016214	TBA
OC-J31B	WPOC.PNAJ31B	1	849373016221	TBA
OC-J31BM	WPOC.PNAJ31BM	1	849373016221	TBA
OC-J31C	WPOC.PNAJ31C	1	849373017068	TBA



# TERMS & CONDITIONS

## TERMS AND CONDITIONS OF SALE

Please read this document carefully, as it contains vital information regarding the Buyer's rights and obligations, including limitations and exclusions that apply.

ON TIME DISTRIBUTION, LLC AND ITS DIVISION ONCORE FILTRATION™ OFFER TO SELL TO THE BUYER EACH PRODUCT SET FORTH ON THE ONCORE ISSUED INVOICE SENT TO THE BUYER ONLY UPON THE FOLLOWING TERMS AND CONDITIONS (COLLECTIVELY, A "SALE AGREEMENT"); BY PLACING AN ORDER FOR A PRODUCT WITH ONCORE, EXECUTING ONCORE'S CREDIT APPLICATION, SENDING OR MAKING A PAYMENT, OR TAKING DELIVERY OF THE PRODUCT, THE BUYER AGREES TO THE TERMS AND CONDITIONS OF THE SALE AGREEMENT AND ACKNOWLEDGES THAT THE PERSON PLACING THE ORDER HAS THE AUTHORITY TO ENTER INTO THE SALE AGREEMENT ON THE BUYER'S BEHALF.

Definitions: "Buyer" shall mean the individual or entity so identified on the OnCore Invoice. "OnCore" shall mean On Time Distribution, LLC, or its division OnCore Filtration™. "Product(s)" shall mean such OnCore product(s) sold to the Buyer according to this Sale Agreement.

These terms and conditions may change from time to time without prior notice and at our sole discretion. The latest version of the terms and conditions will be posted on our website. If the Buyer is unable to view these terms and conditions on the Internet, a copy can be provided to the Buyer by e-mail if requested. Please review these terms before purchasing any product or service.

## PRICING

OnCore generally makes its price for a Product known through its website, catalog, price lists, and sales quotes, although prices are subject to change without notice. OnCore's prices, unless otherwise expressly stated in writing do not include sales, use, excise, value added, or similar taxes or duties. OnCore makes no guarantee that a previously quoted price is available at the time an order is placed. Each request for a product will be filled at the prices set forth on the invoice, or, if no price appears, at OnCore's current list price for the Product at the time such Product is shipped. Invoices shall be due and payable in full, less applicable earned discount, without deduction or set-off by the Buyer and following the terms set forth on the OnCore invoice. Payment shall be made only by the method authorized by OnCore and when due.

The Buyer acknowledges that payments may not be canceled once they are sent or made. The Buyer certifies that all account information provided to OnCore for payment shall be current, accurate, and complete. Any early payment discount is forfeited if the Buyer's check or payment is returned for any reason. OnCore may withhold shipment of orders if payment is not received at the invoice "remit to" address per the terms of each invoice. If any monies are or become due to the Buyer from OnCore or any entity owning, owned by, or under common ownership as OnCore, then OnCore may be offset and/or reduce any such amounts owed by the amount of money that the Buyer owes OnCore for any reason. If the Buyer elects to receive invoices through electronic means, then the Buyer will be responsible for providing and updating an email address for receipt of invoices. If the Buyer agrees to the electronic receipt of invoices, the same terms and conditions will apply.

## TAXES

The Buyer assumes exclusive liability for any and all taxes, tariffs, fees, duties, withholdings, or like charges, whether domestic or foreign, now imposed or hereafter becoming effective ("Taxes") related to the Product and its purchases from OnCore, including without limitation, federal, provincial, state and local taxes, value-added taxes, goods and services taxes, stamp, documentary, excise or property taxes, duties, and other governmental charges. The Buyer shall pay these taxes directly if the law permits or will reimburse OnCore if it is required to pay them. The Buyer will provide tax exemption certificates or evidence of tax payment upon request.

## ORDER ACCEPTANCE

The receipt of an electronic order via email or FTP upload during normal business hours does not guarantee our acceptance of an order. It also does not guarantee confirmation of our offer to sell either. We reserve the right at any time after the receipt of an order to accept, decline, or limit an order for any reason. We reserve the right to supply less than the quantity ordered of any item. We try to maintain the availability of our systems (i.e., Website, internet, etc.). Should we experience technical difficulties, we are not responsible for orders that are not processed or accepted.

## SHIPPING

Charges for shipping and handling will be made in accordance with our current shipping policies, as described below.

The Buyer shall bear all risk and expense for delivery of the Product, including and without limitation, shipping, loading, unloading, storage, freight, and insurance. A Product may be shipped to the Buyer in whole or in part and will be shipped F.O.B. (Freight on Board) OnCore shipping location unless otherwise specified on the face of the invoice or as otherwise stated in its freight policy. Among other things, a signed delivery receipt or bill of lading will constitute proof of delivery. The choice of carrier is made solely at the discretion of the Buyer, and OnCore makes no representation as to the acceptability of a particular carrier. In the event that the Buyer does not select a carrier for a drop-ship order, OnCore will use its discretion to make the most economical choice. Except when OnCore expressly publishes Special Offers or otherwise agrees in writing, OnCore does not guarantee shipment or delivery by a certain date or time, although OnCore will strive to deliver a Product by the date that it may communicate to the Buyer. OnCore shall not be liable to the Buyer, or any other person, for any loss or damage of any kind which results from delay in shipment, delivery, or failure to give notice of delay, whether or not such delay was caused by OnCore or otherwise. OnCore reserves the right to backorder any Product and to ship from backorder in such order as OnCore determines.

## FREIGHT TERMS

OnCore Filtration offers free freight for orders exceeding \$5,000 in qualified regions.

## PAYMENT TERMS

Terms of payment are within our sole discretion. The Buyer will furnish OnCore with any requested financial information pertaining to the Buyer's business enterprise for the establishment and/or continuation of a credit line. All goods will be shipped by OnCore to the Buyer on 30 days credit. The credit period shall begin to run from the date of the shipment. Delay in the sending of this invoice to the Buyer, resulting from any cause arising after the dispatch of the invoice by OnCore to the Buyer over which OnCore has no control, shall not extend the period for payment. ACH, check, and wire transfers are accepted. No credit card or cash payments are accepted at this time. All returned checks are subject to OnCore's current check return charge of \$30.

If the Buyer fails to pay their invoice amount within 30 days of the date of shipment, OnCore may recover from the Buyer interest at the rate of 1.5% per month (18% annual percentage rate) of the total amount outstanding.

## CHANGES IN PRODUCTS

We are always updating and revising our product line and services and we may choose to discontinue products or services at any time. Please review our website or email our Customer Service department at customerservice@ontimedistributor.com to inquire about a particular model of interest. OnCore is not held liable for any lack of availability of products or services a Buyer may try to order.

## LIMITED WARRANTY

Provided that a Product is not altered or damaged by someone other than OnCore, and for up to 90 days from the date that OnCore ships the Product to the Buyer, OnCore hereby warrants that such Product (other than Promotional or Irregular Goods, as described below) shall (i) conform to OnCore's published specifications and generally released consumer/end-user limited warranty coverage terms, subject to reasonable variations, manufacturing tolerances, the occurrence of non-material or minor separations and appearance deviations, and (ii) for authorized resellers of OnCore, shall be merchantable for ordinary purposes for which such Product is intended to be used. Notwithstanding the foregoing, once a Product has been installed, such Product is deemed accepted by the Buyer and no warranty shall apply to appearance-related claims. As the Buyer's sole and exclusive remedy for a breach of the above warranty and at OnCore's sole discretion, OnCore will replace a product that does not conform to an applicable OnCore warranty; provided, however, that OnCore shall not be responsible to replace a product which has been damaged or altered by the Buyer or its customers. With respect to a Product sold as "Promotional" or "Irregular" Goods by OnCore, including, without limitation, drops, discontinued items, seconds, or the like, such Product is sold to the Buyer "AS IS/WHERE IS" without any warranty of any kind except as otherwise expressly agreed to or published by OnCore. EXCEPT AS SET FORTH ABOVE AND TO THE MAXIMUM EXTENT PERMITTED BY LAW, ONCORE MAKES NO OTHER WARRANTIES FOR A PRODUCT OR UNDER THIS AGREEMENT AND HEREBY DISCLAIMS ALL OTHER WARRANTIES, EXPRESS OR IMPLIED, INCLUDING THE WARRANTY OF FITNESS FOR A PARTICULAR PURPOSE OR USE.

All Buyers must inform OnCore, by providing within the applicable warranty or statutory period, complete and specific itemized detail of all claims in the warranty or at law that such the Buyer may have for such warranty or statutory remedy to be applicable.

OnCore Filtration™ cartridges are guaranteed against defects resulting from faulty workmanship or materials. The liabilities of OnCore Filtration™ are limited solely and exclusively to replacement and do not include any liability for incidental, consequential, or other damages of any kind whatsoever, whether a claim is based upon theories of contract, warranty, negligence, or tort, and, without limitation, do not including shipping charges, labor, installation, or any other losses or expenses incurred in operation or installation.

## ORDER CANCELLATION

We strive to exceed our customers' expectations and are dedicated to fast order processing and expedited shipping. If there is a need to cancel an order, a written email request must be sent to our customer service department at customerservice@ontimedistributor.com. Providing the order has not been processed, we will work to accommodate this request. Should an order be ready for shipment, the order will need to be returned per our Return Policy. OnCore may cancel or terminate a Sale Agreement in whole or in part at any time by giving written notice of such to the Buyer. Cancellation or termination by OnCore shall not constitute a waiver or release of any other rights and remedies of OnCore in contract or provided by law or at equity.

## INDEMNITY; LIABILITY LIMITATION

The Buyer hereby agrees to indemnify, reimburse in full, defend and hold harmless OnCore, its parent, subsidiaries, affiliates, officers, directors, personnel and agents from and against any and all liability, claims, suits, actions, losses, costs or expenses including (without limitation) reasonable attorneys' fees relating to or arising out of any claim or demand (a) for any Taxes or related penalties and interest, (b) due to the Buyer's breach of the Sale Agreement; (c) that the Buyer's customers or a third party may make against OnCore based upon or arising from damage due to the acts and/or omissions of the Buyer or due to the installation of a Product; (d) related to the failure of any payment sent or made by the Buyer to be honored or to satisfy the requirement of this Agreement; (e) for infringement or misappropriation of a third party's intellectual property rights based upon OnCore's incorporation of any designs, formulas or specifications in a Product where such designs, formulas or specifications have been specifically ordered or requested by the Buyer. To the maximum extent allowable under applicable law and excluding those liabilities that by law OnCore cannot limit or disclaim, (i) OnCore's aggregate liability arising from or relating to this Sale Agreement or a Product, regardless of the cause of action asserted, is limited to the amount paid by the Buyer to OnCore for the applicable Product and (ii) OnCore shall not be liable for any special, incidental, consequential, indirect, or punitive damages, including without limitation, lost revenues, loss of use of the Product, loss resulting from improper storage, processing, delay in delivery or shipment or errors in shipment or labeling, loss of data, or the cost of any substitute Product or related equipment, even if OnCore has been advised of the possibility of such damages.

## FORCE MAJEURE

In addition to any excuse provided by applicable law, OnCore is excused from liability for non-delivery or delay in the delivery of Products arising from any event beyond its reasonable control, whether or not foreseeable by either party, including but not limited to labor disturbance, war, fire, accident, adverse weather, inability to secure transportation, pandemic, governmental act or regulation, and other causes or events beyond our reasonable control, whether or not similar to those listed above.

## GOVERNING LAW AND ATTORNEYS' FEES

Each Sale Agreement shall be governed and construed in accordance with the laws of the State of South Carolina, without reference to any conflicts of law principles. Any litigation instituted by the Buyer against OnCore that pertains in any manner to this Agreement or the Product must be instituted in the Court of Common Pleas, Florence County, South Carolina. The Buyer agrees to be subject to the jurisdiction of this court. Any such litigation instituted against the Buyer by OnCore may, at OnCore's option, be instituted in the courts above identified or in the state in which the Buyer maintains its principal place of business. The U.N. Convention on Contracts for the International Sale of Goods shall not apply to this Sale Agreement. If any term, provision, or condition of a Sale Agreement is held invalid or unenforceable, the same shall not invalidate or otherwise affect any other provision thereof.

In the event legal action is undertaken by OnCore to collect any amounts due to OnCore by the Buyer hereunder and if OnCore prevails in such action, then the Buyer shall reimburse OnCore for its reasonable attorney fees and costs incurred in conjunction with such action, which amount shall not exceed the maximum amount allowed by law of the forum in which such action is brought.

## ENTIRE AGREEMENT; MODIFICATIONS

Each Sale Agreement constitutes the entire agreement between OnCore and the Buyer concerning the subject matter thereof and supersedes all prior oral or written agreements. The Sale Agreement may not be amended or modified, except by a further written agreement signed by an authorized representative of OnCore. OnCore reserves the right to make reasonable changes to a Sale Agreement, including changes to packaging, testing, specifications, designs, and delivery schedules. The terms and conditions of any purchase order or other instrument issued by the Buyer or its agent in connection with this Sale Agreement or a Product that is in addition to or inconsistent with the terms and conditions of this Agreement are null and void and shall not be binding on OnCore.

## RETURN AND DAMAGED PRODUCT POLICY

### RETURNS

Buyers may return product(s) within 30 days of purchase by contacting our Customer Service Representative (CSR) via email at [customerservice@ontimedistributor.com](mailto:customerservice@ontimedistributor.com) to obtain an authorized Returns Material Authorization (RMA) number. All returns must have an RMA number to be processed for credit. Along with the number, the CSR will provide the Buyer with the return address to where the package is to be returned. An RMA number is only valid for 30 days from the date of issuance.

Please refer to the following when requesting an RMA number:

- ALL RETURNS must be received in their original packaging that is clearly marked with the RMA number. If a return was sent before receiving an RMA number, OnCore cannot guarantee credit will be provided. If we can locate the appropriate order number, a credit will be issued providing the product is not damaged and received in a resalable condition. If a product is returned to OnCore that should not have been returned, we will not process credit and will dispose of the item accordingly. If a return is sent to the wrong location, a credit will not be issued.
- STANDARD PRODUCTS must be returned in original packaging and in a resalable condition to be eligible for credit. Any returns that have been opened (out of packaging-including individually packaged items part of a multi-unit pack), used, damaged, or do not contain all original parts, will not be eligible for a credit.
- CUSTOM PRODUCTS or SPECIAL ORDERS may not be returned and are not eligible for credit.
- DEFECTIVE PRODUCT - Customer service will require an email with a complete description of the issue. We may ask to have the product returned to us for inspection. Return label/call-tag fees will be covered by OnCore Filtration™ if the item is found to have issues pertaining to manufacturing defects. If no defect is found, the customer is responsible for the shipping fees. If returned to the wrong location, a credit will not be issued.
- WRONG ITEM ORDERED AND SHIPPED - If a Buyer orders the wrong item and wishes to return it, an authorized RMA number is required. Return label/call-tag fees, along with a 15% restocking fee, will be charged to the customer. If returned to the wrong location, a credit will not be issued.
- ADDRESS CHANGES - Any address changes after the package(s) have shipped will need to be requested via email to our CSR. Any fees incurred will be charged to the customer. PLEASE NOTE- Any package that was shipped via FedEx Ground Economy (formally Smart Post), USPS, or DHL is not eligible for an address change or to be rerouted to a new address.

## PARCEL SHIPPING CLAIMS

- If the contents of the package are delivered damaged, please email our CSR with the order number along with images of the damaged product in one email. Do not contact the shipping agent or return to sender.
- If shipped via FedEx Ground- we will file a damage claim and issue a credit, if eligible. Unless additional insurance was purchased, the claim only covers up to \$100 of the item value (plus shipping).
- If shipped via FedEx Ground Economy (formally Smart Post) and delivered FedEx Ground- we will file a damage claim and issue a credit ONLY if we are paid.
- If shipped via FedEx Ground Economy (formally Smart Post) and delivered USPS- no claim will be filed, and a credit will not be issued.
- If shipped via USPS or DHL- A damage claim cannot be filed, and a credit will not be issued.

## LOST PACKAGE or MIS-DELIVERED PACKAGE

- Any suspected lost or misdelivered package should be notified to our CSR via email, including the order number.
- If shipped via FedEx Ground - A trace for a lost package can only be requested within 5 days of the delivery date. After a trace has been initiated and the package is still not received by the customer, we will file a lost package claim with FedEx and a credit will only be issued if we are paid.
- If shipped via FedEx Ground - If the Buyer did not receive the package, and it is past the time limitations to request a trace, but the tracking number shows the package as "Delivered," we will not file a lost package claim and a credit will not be issued.
- If shipped via FedEx Ground Economy (formally Smart Post) and the package was delivered by FedEx Ground, a trace can only be requested within 5 days of the delivery date. If a lost package claim is filed, a credit will only be issued if we are paid. Any requests for FedEx Ground or FedEx Ground Economy (formally Smart Post) trace after 5 days from the delivered date will not be considered.
- If shipped via FedEx Ground Economy (formally Smart Post) and delivered by USPS - a trace is not available, a claim cannot be filed, and a credit will not be issued.
- If shipped via USPS or DHL, a trace is not available, and a credit will not be issued.
- OnCore Filtration™ is not responsible for any product that is lost, stolen, or misdelivered via USPS parcel post mail or DHL. We recommend selecting FedEx Ground service for tracking visibility.

## REFUSED SHIPMENTS

Deliveries that are refused will not be refunded. Please refer to our Return Policy above and follow the instructions if the Buyer wishes to return the product(s). This includes packages that are delivered damaged. Please refer to our Shipping Damage Policy.

## UNDELIVERABLE ADDRESS

If a Shipment is returned to the facility due to an undeliverable address, the Buyer is responsible for any shipping costs incurred to reship the order, along with a 15% restocking fee.

## INTERNATIONAL ORDERS

All International orders will be shipped via DHL or FedEx International Economy or Priority unless otherwise requested when the order is placed. OnCore will attempt to accommodate shipping requests made within reasonable timeframes; however, OnCore cannot guarantee the acceptability of any carriers. Buyers are responsible for all import duties, taxes, and additional fees that customs agencies may impose.

## FREIGHT CLAIM (LTL/TRUCKLOAD)

The consignee is responsible to file a freight claim on a lost or damaged product with the carrier. Products must be counted and inspected immediately upon receipt from the carrier. Items missing or damaged should be clearly documented on the Bill of Lading (BOL) and signed while the driver is present. Freight claims should then be filed with the carrier. If any concealed damage is noted after receipt of goods, then the carrier should be notified immediately, and an inspection of the product(s) is requested so that the proper liability may be identified, and appropriate claim(s) filed.

- A shipper has 9 months to file a freight claim. A shipper has 15 days to get an inspector to come in to view damaged freight. A carrier has 30 days to acknowledge in writing that they received the shipper's freight claim. The carrier has 120 days to issue a resolution.

## BUSINESS HOURS

Customer Service: Monday-Friday (8:30 a.m. to 5:00 p.m. EST)  
Shipping/Distribution: Monday-Friday (8:00 a.m. to 4:30 p.m. EST)  
Holidays Observed:  
New Year's Day  
Memorial Day  
Independence Day  
Labor Day  
Thanksgiving Day  
Day after Thanksgiving  
Christmas Day





## Empowering the next generation of young athletes across the nation!

At OnCore, giving back is at the heart of what we do. That's why we proudly stand behind TEAM USA Artistic Swimming, empowering the next wave of champions across the nation. We're excited to continue supporting their success, promoting the importance of water purity, and helping to elevate the sport of artistic swimming nationwide for years to come.



[OnCoreFiltration.com](https://OnCoreFiltration.com)  
Call: 843-620-6260

